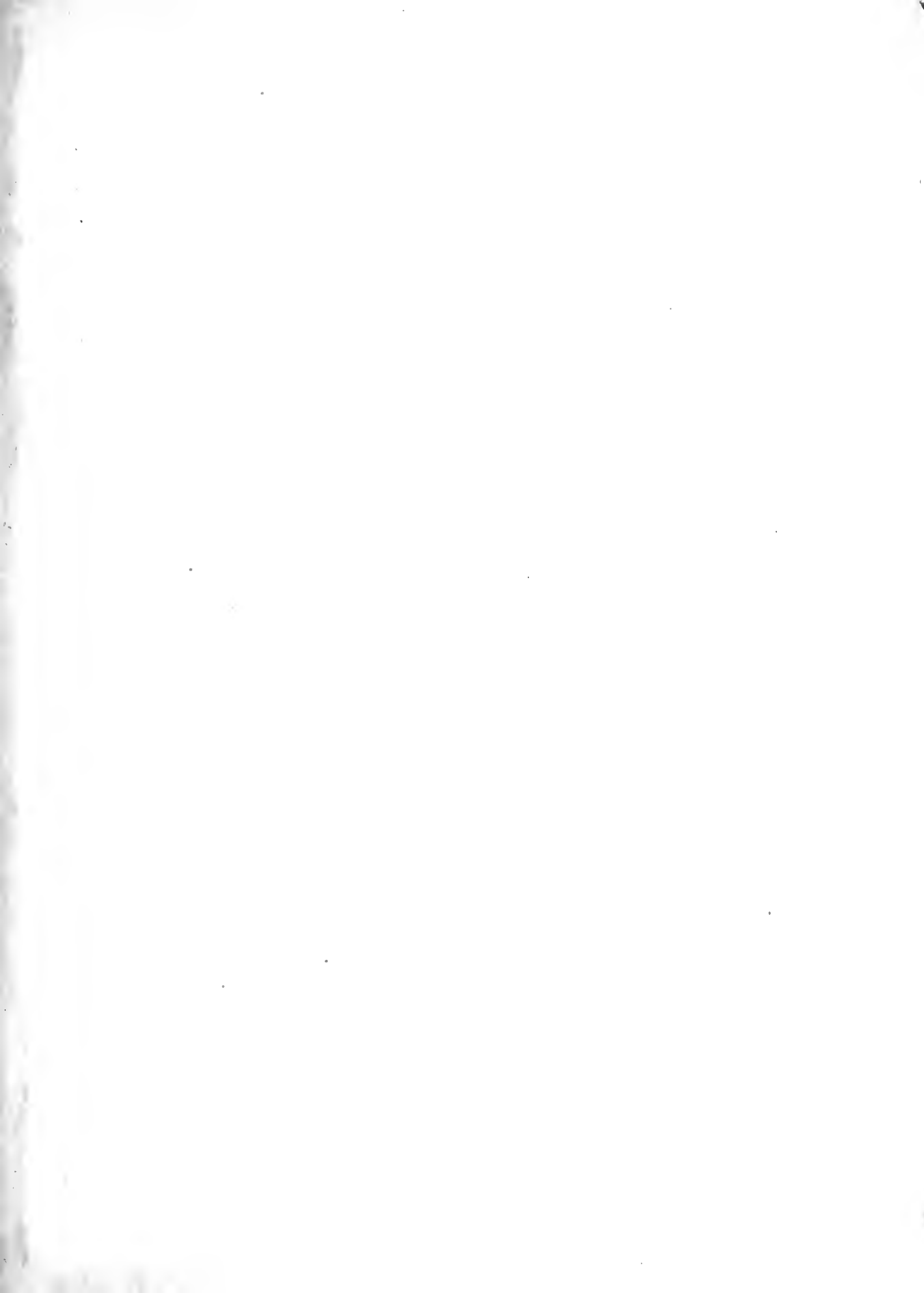
The logo consists of the letters 'N' and 'K' in a stylized, outlined font. The 'N' is formed by two vertical bars and a diagonal bar connecting their tops. The 'K' is formed by a vertical bar and a diagonal bar connecting its top to the right side of the 'N'.

tehnala

1934

Digitized by the Internet Archive  
in 2011 with funding from  
LYRASIS Members and Sloan Foundation

<http://www.archive.org/details/technala1934stud>





*Copyrighted*  
1 9 3 4

Marjorie Goff, Weary Editor-In-Chief  
Frances Koch, Harassed Business Manager

*The* Tech

M O N T E V A L L O

nalā of

1 • 9 • 3 • 4

A YEAR BOOK  
PUBLISHED BY  
THE STUDENTS OF  
ALABAMA  
COLLEGE



A L A B A M A

# Let's be



## C O N T E N T S

Introductory  
Administration

The Classes ♦

♦ Activities

Athletics ♦ ♦

♦ ♦ Features

Organizations ♦



*Very*  
Confidential

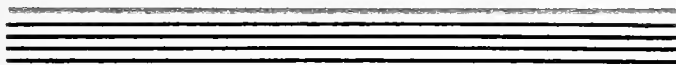
In our loudest stage  
whisper, let us pass on  
to you the desire that  
the leaves of this year-  
book, if frayed, will be so  
from constant use rather  
than from the nibblings  
◆ of unfeeling mice. ◆

In Ad

E M I N E N T

miration of

Those Twentieth  
Century American  
Women who occupy  
unique positions of  
distinctive leader-  
ship, we offer this  
book as a tribute



W O M E N

*Mrs.  
Roosevelt*

*A* NNA ELEANOR ROOSEVELT has set before the women of her generation an ideal of a well-balanced social and public life. She fills her place as home-maker and hostess at the Executive Mansion graciously and efficiently without seriously altering her activity in educational, business, and social affairs. To each of her many activities Mrs. Roosevelt brings the best of her knowledge, experience, and personality. Born and reared essentially a patrician, like her husband, she continues to show in her program of life the great American pioneer qualities.

In answer to the question, "Shall women work at all?" Mrs. Roosevelt says:

"It seems to me that in this progressive country of ours the brains of men and women will be busy devising ways for new work where the satisfaction of work may be enjoyed by men and women alike." She prophesies that "The fruits of this work will eventually mean for our people richer and fuller lives."

*Eleanor Roosevelt*

*The First Lady*



O F T H E L A N D





PALMER HALL, THE ADMINISTRATION BUILDING

*The*  
**BOARD**  
 • OF •  
**TRUSTEES**

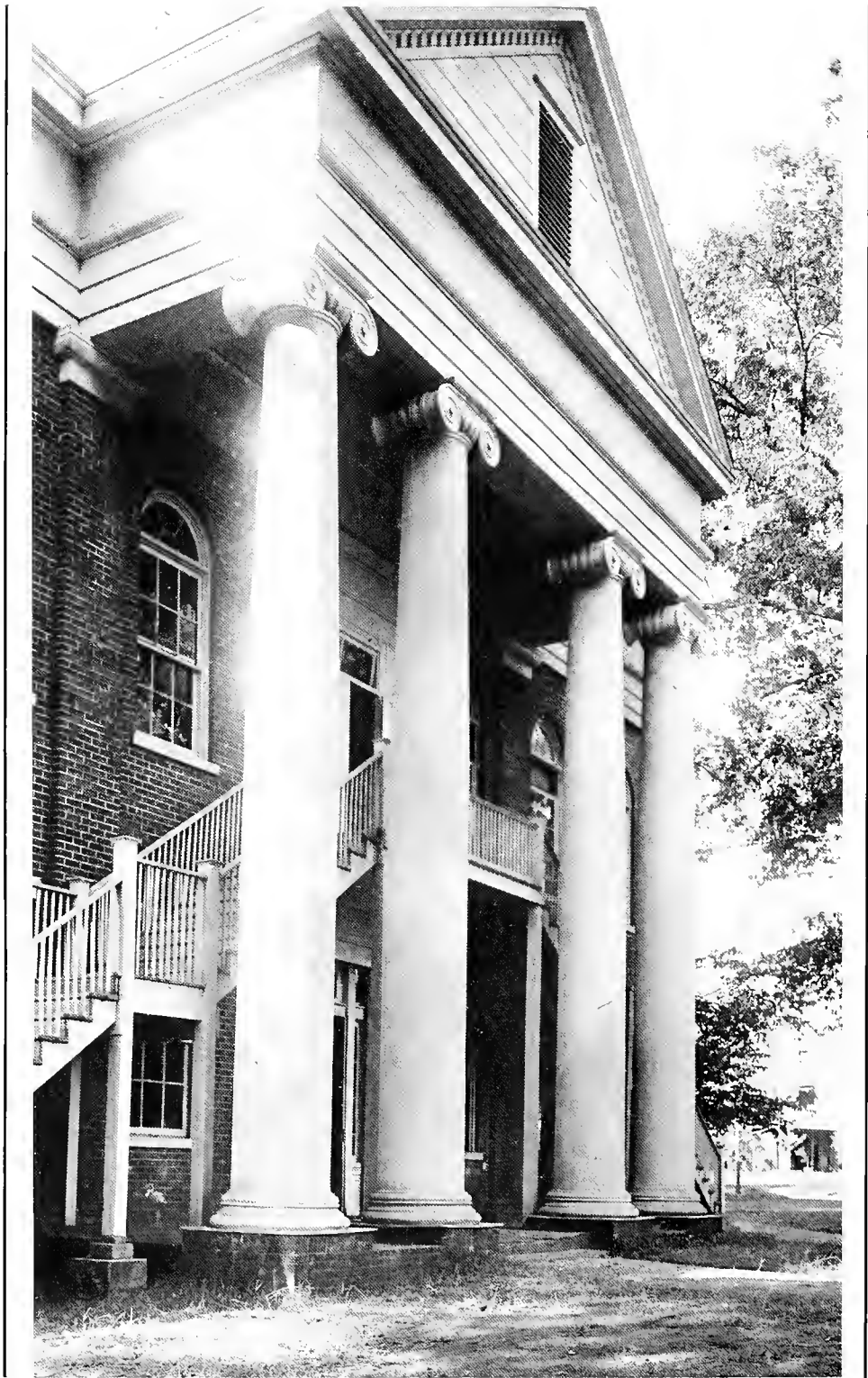
HIS EXCELLENCY, B. M. MILLER, Governor of Alabama  
*President, Ex-Officio*

A. F. HARMAN  
*State Superintendent of Education, Ex-Officio*

- SAMUEL M. JOHNSTON, *First District* . . . . . Mobile, Ala.  
 MRS. J. BREVARD JONES, *Second District* . . . . . Montgomery, Ala.  
 MRS. A. Y. MALONE, *Third District* . . . . . Dothan, Ala.  
 BRUCE BEVERIDGE, *Fourth District* . . . . . Selma, Ala.  
 W. D. GRAVES, *Fifth District* . . . . . Alexander City, Ala.  
 W. B. OLIVER, *Sixth District* . . . . . Tuscaloosa, Ala.  
 GEORGE S. VANN, *Seventh District* . . . . . Gadsden, Ala.  
 J. E. DELONEY, *Eighth District* . . . . . Tusculmbia, Ala.  
 FRED FITE, *Ninth District* . . . . . Birmingham, Ala.  
 MRS. W. D. PEEBLES, *Tenth District* . . . . . Aliceville, Ala.  
 WILLIAM H. TAYLOR, *State-at-Large* . . . . . Birmingham, Ala.  
 L. SEVIER, *State-at-Large* . . . . . Birmingham, Ala.  
 E. H. WILLS, *Treasurer* . . . . . Montevallo, Ala.  
 E. S. LYMAN, *Treasurer* . . . . . Montevallo, Ala.  
 JOHN R. PILL, *Land Agent* . . . . . Birmingham, Ala.

EXECUTIVE COMMITTEE

- A. F. HARMAN . . . . . Montgomery, Ala.  
 W. D. GRAVES . . . . . Alexander City, Ala.  
 O. C. CARMICHAEL, *Secretary* . . . . . Montevallo, Ala.



## ROMANTIC REYNOLDS HALL

It was in front of this building that men were mustered into service at the time of the Civil War, receiving a flag made and presented by Montevallo's fair ladies.





KING HOUSE, WHICH BOASTED THE FIRST GLASS WINDOWS IN THE STATE

# The Birth of an Idea

## Alabama's Eminent Woman

JUST as the eminent women of today have grown from the unpretentious little college girls of yesterday, so the dim, shadowy idea that had its conception in the mind of Julia Tutwiler has grown far beyond the wildest dreams of its founder. Conceive, if you can, a woman devoted to the education and up-building of womankind, at the same time remembering the age in which she lived, a mid-Victorian environment, and faced with an apathy or even prejudice to higher education for women.

For years this first state-supported school for women struggled against the misfortunes and disappointments which assail every new institution. Finally, Alabama College emerged, holding high her head, flashing, triumphant,—educating women to take responsible positions in the life following college years.

Just as now it is a far cry from the days of Julia Tutwiler, so the institution which has grown to such stately proportions of today may indeed be only a beginning of what will evolve tomorrow.

A tiny germ in the mind of a great woman—the smallest spark of an idea—and then, it grew into a great institution.



JULIA S. TUTWILER



Looking out on the front campus from the vine-covered loggia of Main Dormitory.

# Looking



CAPTAIN HENRY CLAY REYNOLDS  
First President



FRANCIS MARION PETERSON  
Second President

# Backward . . .

IN viewing the past, one perhaps is more interested in the tempo of each successive era, rather than in mere historical facts. And to portray student life of the earlier days, nothing can be more illuminating and, at times, perhaps amusing, than to read again some of the rules under which they lived.

Freshmen could not go to town for the first month of their stay at the college. On Sunday afternoon from two to four there was a quiet hour, during which each girl was required to rest, or spend her time in some form of reading and meditation. Or, she might write letters, but one rule was rigidly enforced: absolute quietness, with no visitors allowed.

Students in the gym regalia of the times were not allowed to appear outside the walls of the gymnasium. There was a compulsory recreation hour. The number of week-ends one could leave the campus during each semester was limited to three. No dates were allowed during the week, nor could visitors eat with the girls in the dining room. Story-telling is described as being the principal means of entertainment in which both faculty and students alike participated.

At one time men were allowed to dance in the assembly with the girls. However, after one particular gala affair about Christmas time, the following notice was posted on the student government board: "Hereafter, no gentlemen will be allowed to dance on the school grounds."

This year's startling and impressive plans for a Senior Prom mark the first dance-venture since that formidable notice was posted.

Removed from direct contact with us, yet always a part of us, the wives of our former Presidents are still living. Mrs. Reynolds, Mrs. Peterson, and Mrs. Palmer are shown below.



DR. THOMAS WAVERLY PALMER  
Third President



*The Tower*

# In Our Times

## THE PRESIDENT

●



DR. O. C. CARMICHAEL

**P**LAYS checkers with his sons at night, and occasionally wins. . . . Takes them to one big football game a year. . . . Golfs every Saturday afternoon—average game is 82-80. . . . Walks twice daily from his home to his office. . . . Smokes a pipe and uses Prince Albert tobacco. . . . Drinks one cup of coffee a day. . . . Drives his own car. . . . Has cooked in emergencies. . . . Likes to vacation with his family on the coast. . . . Speaks with notes at hand, but seldom uses them. . . . Reads at night and likes books on Philosophy and Oriental life. . . . Has lived on four continents, Asia, Africa, Europe and North America. . . . Spent Christmas in six different countries, in six successive years, without repeating a country. . . . Has crossed the Atlantic ten times and the Indian Ocean four times. . . . Was appointed Captain in the East African Expeditionary Forces in 1916 by General Jan C. Smuts. . . . Was arrested twice during the war for a spy, once in Holland and once in Belgium. . . . Was Alabama's sixth Rhodes Scholar. . . . Has created a staunch loyalty and genuine devotion in the heart of every student at Alabama College.





DR. T. H. NAPIER

## THE DEAN OF THE COLLEGE



**E**NJOYS mowing grass, golfing, driving his car, hunting and fishing—to catch fish. . . . Is very fond of periodical reading. . . . Is keen for football and baseball, but doesn't like basketball for men. . . . Likes good movies, but doesn't go generally—is always conscious of the artificiality of it. . . . Much prefers Shakespearean tragedy played by a good troupe on the legitimate stage. . . . Likes to row a boat and visit harbors. . . . Favorite expression is, "Now I may be wrong about this, young ladies," and never is. . . . Occasionally gets out a math book and will spend an entire evening over an intricate problem. . . . Is extremely fond of children. . . . Favorite poet is Byron. . . . Also likes Keats, Shelley, Poe, and Tennyson. . . . Believes the general philosophy of life is to debunk things. . . . Wishes people would live so that they might grow old with grace and ease. . . . Considers this the happy result of good living. . . . And because College Night was dedicated to him this year we know that he holds the love and highest esteem of every Alabama College girl.



# THE REGISTRAR AND BUSINESS MANAGER



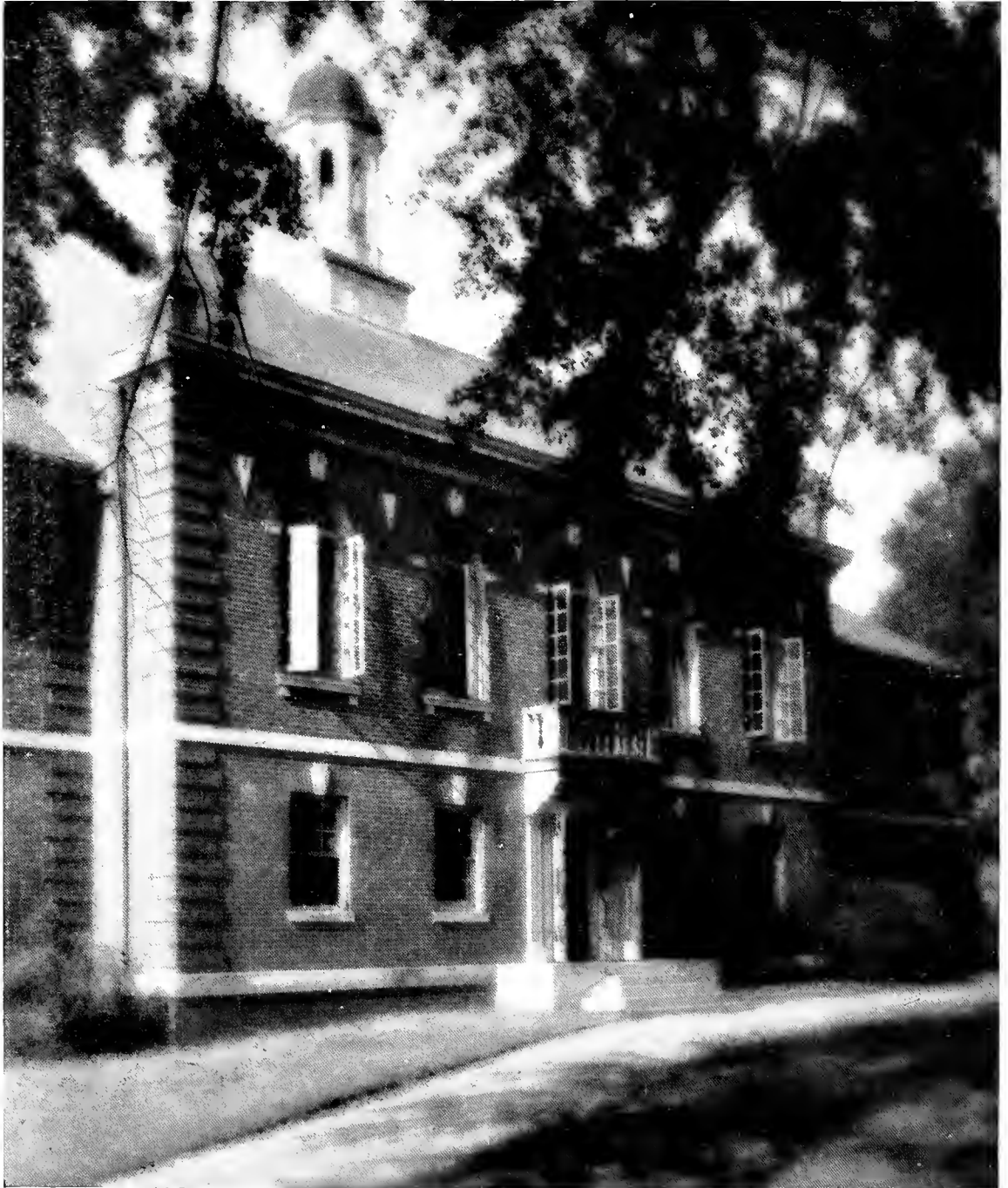
MR. E. H. WILLS

**L**IKES chicken better than any other food. . . . Thinks contract bridge the finest game ever invented. . . . Golfs as often as possible. . . . Is strong for football. . . . Played baseball at Auburn and likes tennis. . . . Abominates modern fiction—says it has too much “triangular stuff”—but reads this in order to be able to talk about it. . . . Likes detective stories. . . . Thinks the idea that working around the house and digging in the garden is the “bunk.” . . . Believes that work of any kind is work. . . . And any relaxation is a far cry from it. . . . But says that it is not the amount of work that shortens life—it’s the lack of exercise. . . . Smokes numerous cigarettes, but drinks coffee moderately. . . . Can cook eggs, toast, and coffee, and can fry bacon when in a pinch. . . . Is a great believer in specializing, meaning—each man to his own trade. . . . Likes to stay home and says this is a sign of approaching age. . . . Has a Master’s degree in history from Cornell. . . . Says his favorite poem is:

*The larger fleas have smaller fleas  
Upon their backs to bite 'em;  
The smaller fleas have smaller fleas  
And so—ad infinitum.*



# To Classes We Must



## CALKINS HALL

Our most recently acquired classroom building, is the hall of music. In it are the practice rooms, appropriately appointed with numerous windows from which escapes a perpetual symphony of conglomerate sound to the ears of the less musical passers-by.



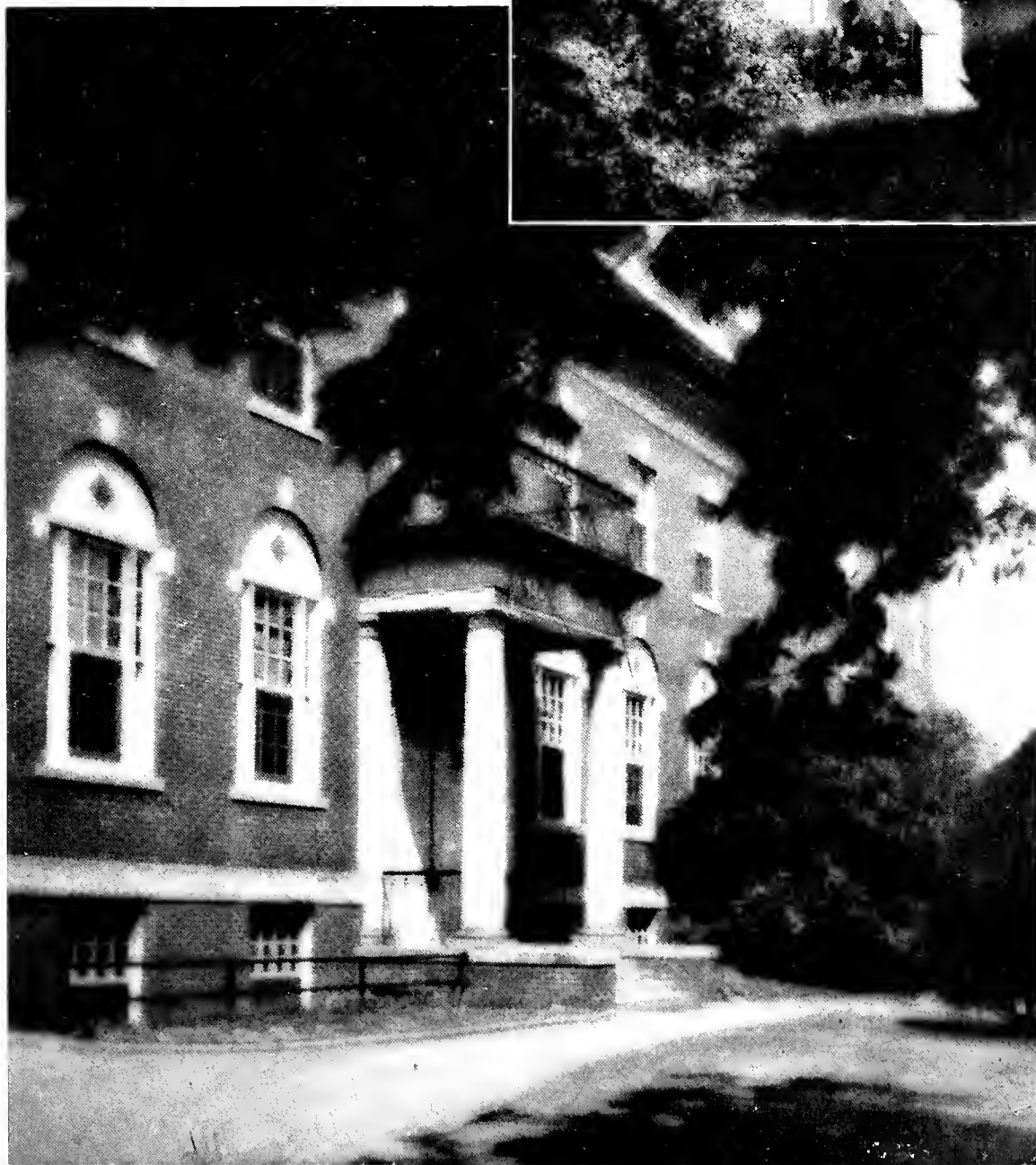
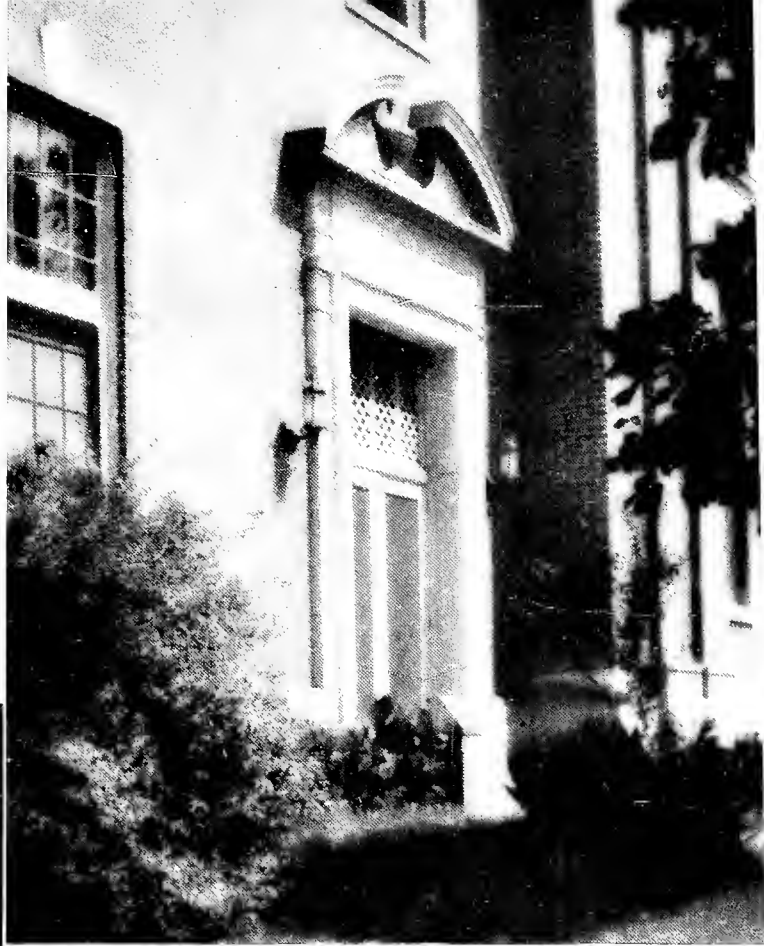
# Tread . . .

## THE LIBRARY

Before we dare go to class we must make a trip to the library and delve into the stacks for a parallel reading in one of the 28,000 volumes, and so proceed to astonish the class with an unaccountable display of learning.

## BLOCH HALL

Named in honor of Sol D. Bloch, author of the bill establishing the College, this building is the home of the sciences and languages. Many are the feet that tread its corridors daily.



# Where We



## RAMSAY HALL

The Senior Dormitory, where our dignified sisters nightly cold-cream their faces and nonchalantly enjoy "late lights."

## MAIN DORMITORY

The abode of the Freshmen and Sophomores, where many a pillow is tear-stained during those first trying weeks and many a letter is written home for "another check to buy a book."



# Rest Our Weary Heads . .



## HANSON HALL

Where all the nice flowers and ferns grow and  
all the gay Juniors have marvelous midnight  
feasts and get a radio at Christmas.



# The Brain Trust



## MATERNAL MOTIF

Mr. "Z" with Little "Z" on the go. Junior hitches his wagon to a "star" and rides along on the wave of his Dad's talent \* \* \* Mrs. McCoy tucks her restless "daughters" safely in for a week-end jaunt. "Saul" children will have a good time on "bus" \* \* \* Mr. Kennerly tells his cherubs how to keep the flowers down and make the weeds grow \* \* \* Miss Garrett gingerly cuddles her pup.

## PROGRESSIVE MOTIF

Moving forward is a prerogative which no faculty member should ever fail to exercise, as the power of suggestion is very strong, the kiddies always notice what the grown-ups are doing. Above we note, in the following order: (1) Miss Metony progressing \* \* \* (2) Mrs. Ratid progressing \* \* \* (3) Miss Moore progressing \* \* \* (4) Miss Gulson progressing.

## HOBBY MOTIF

Failing to get the camera through the keyhole, our photographer had to catch these "out". "Do what you like to do best", they were told,—see what was snapped: Miss Peter on her favorite mount \* \* \* Miss Blackiston with her trusty steed field in check \* \* \* Miss Saylor lens an eye to photography \* \* \* Mr. Ingalls' violin "takes him up".

## CLASSIC MOTIF

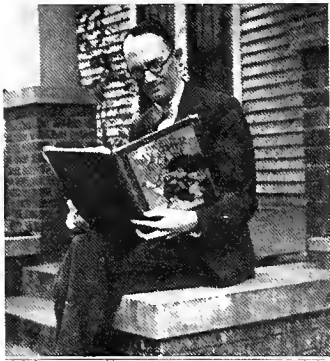
Mrs. Grissom, serenely unconscious of the photographer's ulterior motives, is just before making a trip to Birmingham to see her daughter \* \* \* Miss Hilde's "acknowledged excellence" is displayed in her friendly understanding \* \* \* A healthy love for history has given Dr. Farnor the head place in that department, to which "classicism" is the password \* \* \* Miss Brownfield dashingly dons a coat that causes us to look with contempt at our own "swagger".

# RELAXES



## ATHLETIC MOTIF

Above are only four of the faculty members who have helped to lengthen the span of their lives by exercise. Dr. Vaughan surrenders to a game of baseball \* \* \* Dr. James watching for flies \* \* \* Mr. Anderson "backs up the team" \* \* \* Although Miss Mosserop is fully dressed and smiling, it will only be a moment before she dons her athletic costume and - - -



## INTELLECTUAL MOTIF

Some of our faculty step out in their well-merited trappings of learning. Mr. Orr reads *Mother Goose* and discovers the fountain of youth \* \* \* Miss Russell enters the library where new wrinkles and neurotics are being formed \* \* \* Miss Demony reads *The Alabamian*, which shows she is only human \* \* \* Our young Rhodes scholar, Mr. Giddens, whose first picture is released here.



## SANG FROID MOTIF

A few of our faculty never flinch before the camera's eye. Mr. LeBaron takes it like a little man \* \* \* Miss McWilliams' bravery is compared to that of the Trojan Warrior — are you taking notes? \* \* \* Miss Farrar takes it singing \* \* \* Mr. Sharp overcomes that natural timidity we all have when facing a relentless camera by getting a firm grip on himself.



## DOMESTIC MOTIF

The genus professor has its habitat in the home. Miss Tansil is seen here coaxing the soil. Perhaps she's investigating the intricacies of a growing "spud" \* \* \* Miss Winer waxes aesthetic over first blooms \* \* \* Miss Steckel persuades a vine to be "clinging" \* \* \* The "Mrs." ties an apron around Mr. Anderson. It must be the wife's night out.



MRS. O. C. CARMICHAEL

# OUR PRESIDENT'S FAMILY

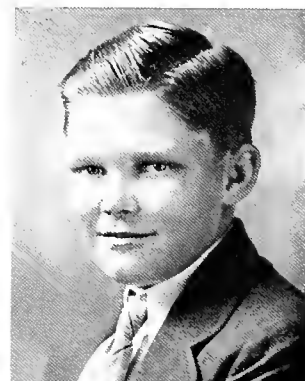


AT the end of an avenue of trees, within a setting of quiet appropriateness, lives our First Family.

Our First Lady, Mrs. Carmichael, is the embodiment of all the attributes implied by this suitable title. She represents the assemblance of charm, cordiality, and regal dignity which commands for her the respect and admiration of each Alabama College student. Because of her quiet grace, unassuming manner, and friendly smile she is the students' guide to culture and charm.

And equally dear to us are Fred Henry and "Mickey" who do not allow themselves to be spoiled by the many attentions which are shown them by the girls on the campus. Their interests are taken up with exciting tennis matches, galloping up and down the campus on their pony, skating, bicycling, and reading books of adventure and science. Above all, they are boys to the fingertips. And because every member is so lovable, each Alabama College student will always cherish the memory of our First Family.

FRED HENRY  
AND "MICKEY"  
IN PERSON

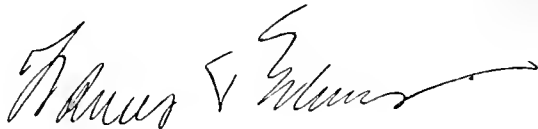


# The Classes

*Frances  
Perkins*

ONE of the driving forces in the New Deal program launched by President Roosevelt, Frances Perkins, first woman Cabinet Member, has proved to be the most constant single personality representing the human element in the Federal program. She is not merely the benefactor of working men and women, she is the friend of social justice. This appears in her humanizing of employment statistics and in all her fights for the wage-earner. In fostering, promoting, and developing the welfare of wage-earners, Frances Perkins is succeeding to an amazing degree in the advancement of the social scheme.

It has been said of her, "She is neither a radical nor a reactionary. She began her public career with the calm realization that a large number of social ills cried out for correction, and she was sane enough to adopt an intelligent, realistic approach to the problem . . . Now with the same quietness that marked her earliest efforts, she is convinced that standards may be raised still higher."

A handwritten signature in cursive script, appearing to read "Frances Perkins". The signature is written in dark ink and is positioned below the main text block.

*The First Lady*



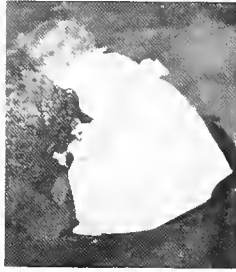


C A B I N E T M E M B E R



# Four little girls who have made good

**ELEANOR RENNIE**—she of the sparkling tan eyes and the dancing tan curls has been "play acting" since the tender age of three. She's not quite so backward in her aspirations now as her earlier picture denotes, having become a full-fledged interpreter of roles ranging from the difficult one of the Christ-like Manson in "Servant In The House" to the charmingly irresponsible Judith in "Hay Fever." This Senior Class President is a gallant trouper, a true neophyte, and a delightful personality.



**MARION BOZENHARD**—President of the Junior Class—is dusky, with a brave beauty, that of unadorned simplicity. Her marked versatility takes her into many fields from creative writing to athletics, and makes her the true leader that she is. Born in the snowy North, she combines its exhilarating freshness with the sunny warmth of the South. She will be remembered at Alabama College for her scintillating eyes and her varied achievements.



**BETTY BISHOP**—has emerged from a sturdy, boyish little creature into a brown, quick-moving person with a charmingly unruly mop of hair. She impresses one first of all with her efficiency and purposiveness, until a quick flash of white teeth in her tanned face reveals her ready humor. As President of the Sophomore Class she takes her place as a born director whose smiling "please" and sincere "thank you" never fails to solicit the help of her admirers.



**JANE FOWLER**—a pretty tot, grew inevitably up, into an individual and distinguished looking young lady. She can sing a tuneful ditty, recite a pretty poem, and is, oddly enough, demurely sophisticated. She has many loyal friends, as shown by her election in this her first year to the presidency of the Freshman Class.



## *The Class*

# P R E S I D E N T S



DR. J. R. STEELMAN

## CHAIRMAN OF SENIOR CONSOLE

<sup>3</sup>Webster, *New International Dictionary*:  
**CON-SOLE'** (kōn-sol'), v. t.; --soled' (sold');  
--sol'ing (—sol'ing). [L. consolari, p. p.  
—atus; con solari to console.] To cheer in  
distress or depression; comfort; soothe.  
**Syn.** Solace, sustain, encourage, support. SEE  
**COMFORT** (same dictionary).

ONE of the youngest members of the Alabama College faculty, Dr. J. R. Steelman, advisor to the Senior Class, has so loyally filled this position that he has earned a love and admiration equalled by few. His quick smile, his cheery greeting, and his sympathetic understanding have endeared him to the class as a whole. His boyish enthusiasm, his collegiate spirit, and his interest in us as individuals have made him not only a respected advisor but a genuine friend. Through the force of his own personality, he has projected himself into the progressive spirit of our student activities and organizations. His inspiration and aid have been far-reaching, and to him the Senior Class pays their most sincere tribute.



*The*

S E N I O R S



OPINIONS

Emma, you're so conservative with your nice personality that you don't give many of us a chance to find out how really charming you are—but those of us who do know realize you are a most delightful companion.



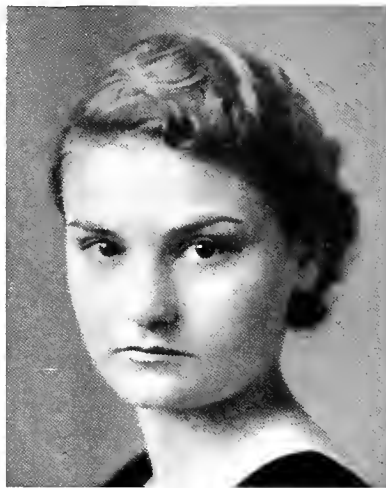
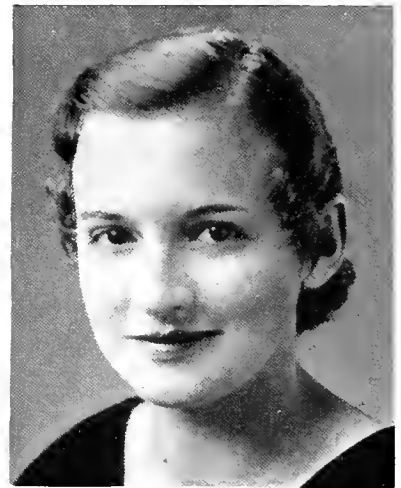
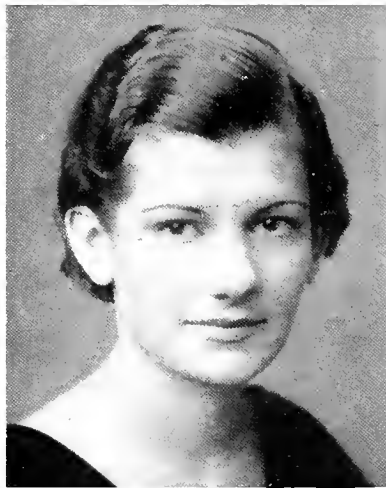
An outstanding athlete, a vivid personality, a pixy-like smile seeming to hide a multitude of fascinating secrets, and an admirable councilor in one of our major sports.



A frank glance that seems to look right through people makes Kathleen a most unusual person. We are often tempted to ask you, Kathleen, for some of the opinions formed by those glances—but no! You make us keep our distance with cordial aloofness: remarkable trait, Kathleen!



Nellye has a fastidiousness of tastes, an instinct for artistic arrangements, and a tendency toward home building.



EMMA ALLISON, B.M. . . . . Carlowville  
 Honor Roll, 1, 2, 3, 4; Music Club, 1, 2, 3, 4; Glee Club, 1, 2; Musical Council, 2, 4; President Musical Council, 4; Senate, 3; Kappa Delta Pi, 3, 4; Vice-President, 4; Singers Club, 3.

VIRGINIA ALVERSON, B.S. . . . . Springville  
 Physical Education Club, 1, 2, 3, 4; Athletic Board, 4; Hockey Team, 2, 3, 4; Volley Ball Team, 3, 4; Baseball Team, 3, 4; Secretary Honor Board Summer, 4; Camp Councilor Summer, 4; Senior Representative of Physical Education Club.

KATHLEEN ARMBRESTER, B.S. . . . . Renfroe  
 Home Economics Club, 1, 2, 3, 4; Biology Club, 2, 3; Junior League of Women Voters, 4; International Relations Club, 4.

NELLYE BLAND, B.S. . . . . Abbeville  
 Alpha Kappa Gamma, 1, 2, 3, 4; Y. W. C. A. Freshman Commission, 1; Hall Chairmau, 1.

• The •  
 S E N I O R S

ROSA BRANNON, B.S. . . . . Headland  
Executive Board, 2; Kappa Delta Pi, 4.

DOROTHY BRUNSON, A.B. . . . . Talladega

MARJORIE BURGE, B.S. . . . . Kimbrough  
Honor Roll, 1, 3; Secretarial Club, 1, 2; Delta Phi Alpha, 4.

VIOLA BURKS, B.S. . . . . Rockford

• *The* •  
S E N I O R S



OPINIONS

A Diana-like swiftness on the athletic field, a dash of vivid personality, a competent handling of the ever-present studies leaves us breathless as to Rosa's capabilities.



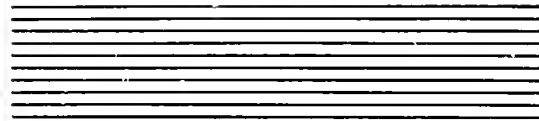
A tiny little girl—dainty and dignified—with a quiet laugh and a love for good books and Spanish.



A delightfully friendly attitude toward the world, an imperviousness to trivialities, and a capacity for hard work.



Aloof dignity to the world—genuine sincerity to her friends—and very much in love.



OPINIONS

A pair of bright, deep brown eyes, a friendly smile and a pleasant mixture of quiet reserve and versatile talent. We like you, Evelyn, for these.



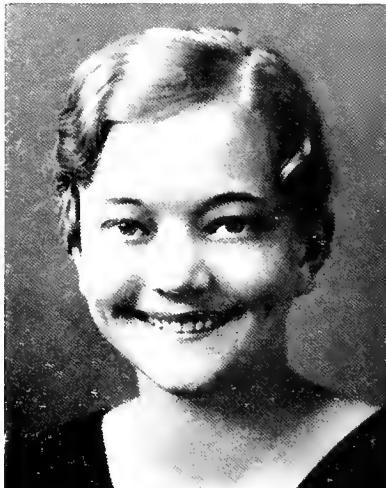
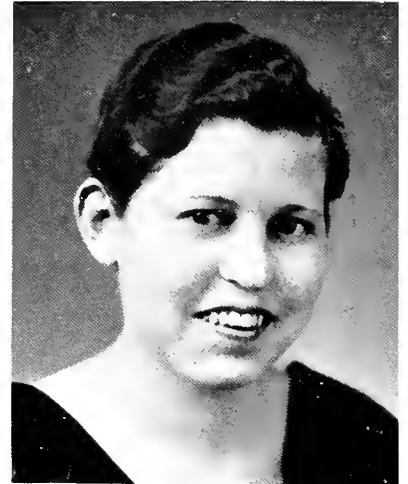
Mary Ben is outstanding in her scholastic achievements. We think of her as a housewife who will count her calories correctly and make her design for living carefully.



Sarah is a lovely combination of quaint, clean "blondiness," clever staccato speech and decided musical ability.



An impish expression—laughing brown eyes—a mischievous personality—a delightfully elfin-like little girl.



EVELYN CALHOUN, B.S. . . . . Minter  
Basketball, 1, 2, 3; Glee Club, 1, 2, 3, 4, Treasurer, 3; Home Economics Club, 1, 2, 3, 4, Secretary, 3; Omicron Nu, 4; Executive Board, 4.

MARY BEN CARPENTER, B.S. . . . . New Hope  
Omicron Nu, 3, 4, Treasurer, 4; Alpha Kappa Gamma, 1, 2, 3, 4; Honor Roll, 1, 2.

SARAH CATER, B.M. . . . . Anniston  
Freshman Y. W. C. A. Commission, 1; Glee Club, 2, 3, 4, Business Manager, 4; Singers' Club, 3; Delta Phi Alpha, 2, 3, 4, Secretary-Treasurer, 4; Presbyterian Student Council, 1, 2, 3, 4, President, 4; Calkins Music Club, 2, 3, 4, Vice-President, 4; Music Council, 4.

JIMMY LOU COBB, B.S. . . . . Ashville  
Y. W. C. A. Freshman Commission, 1; Sophomore Council, 2; Executive Board, House President, 2; Treasurer Executive Board Summer, 2; Social Service Club, 1, 2, 3; Freshman Orientation Committee, 2, 3.

• The •  
SENIORS



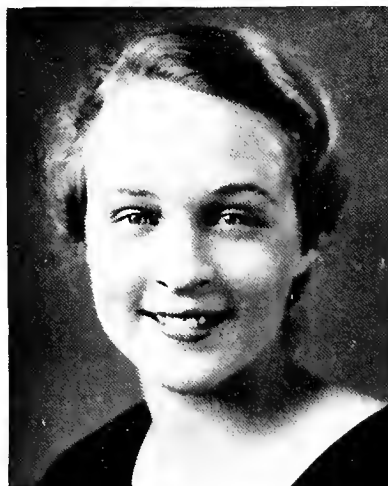
KATHLEEN COBB, B.S. . . . . Ashville  
 Honor Board Summer, 2; Honor Roll Summer, 3; Alpha Kappa Club, 1, 2, 3;  
 Hall Chairman, 2, 3.

MARGARET COLEY, A.B. . . . . Alexander City  
 Class President, 1; Freshman Commission, 1; Sophomore Council, 2; May  
 Day Representative, 2, 3; English Club, 2, 3; Association of Childhood  
 Education, 2, 3; Publications Board, 3, 4; Y. W. C. A. Cabinet, 3; Campus  
 Character, 3; Alabama Staff, 3, 4; Vice-President Y. W. C. A., 4; Senate, 4;  
 English Council, 4; Alabama Players, 4; Vice-President Association of Child-  
 hood Education, 4; College Night Leader, 4.

GLADYS COOK, B.S. . . . . Camden

VIRGINIA COOK, B.S. . . . . Roanoke

# • The • SENIORS



## OPINIONS

A person who dares to say what she thinks; a directness combined with a disarming personality, which makes her most popular.



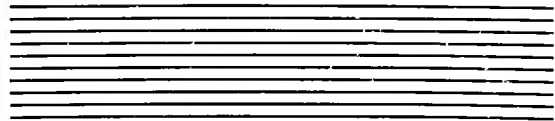
Margaret is one of those refreshing creatures who combines laughing grey eyes with an adorable dimpled smile to make you think of a little girl at her first birthday party. She is charming, attractive, and sincere—an ideal Miss Alabama College.



Light brown hair; brown, probing eyes; delightful freckles peeping through lovely transparent skin; and an aloof friendliness—a most unusual girl.



A queenly dignity combined with a real love of fun, a superb indifference to public opinion, combined with a sincere friendliness toward a choice number, make you an admirable figure on our campus, Virginia.



OPINIONS

May your crooked little smile, your superior mentality, and your eagerness toward life make for you the happiness and success, which you so deserve, Pauline.



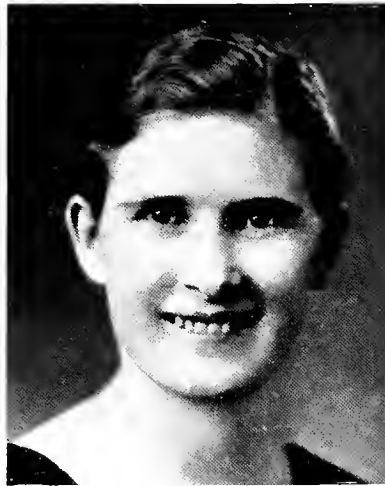
Superior tastes—finely engraved paper—tailor-made clothes—rare old paintings—sophisticated magazines.



Effie is the rare type to whom we wish to go with confidences. We know she is worthy of our trust. She is capable, talented, individual, and lovable.



Viorene must have been adopted in her infancy by Cupid, for she certainly leaves a trail of broken hearts behind her. All she has to do is flutter her long black eyelashes over her light blue eyes and giggle deliciously—once—and immediately she's planning a trip to Auburn to the mid-terms.



PAULINE COTNEY, B.S. . . . . Lineville

MARGUERITE COUCH, B.S. . . . . Guntersville

Senate, 1, 2; Art Club, 1, 2, 3, 4, President, 3; Honor Roll, 1, 2, 3, 4; Presidents' Council, 3; Music Club, 2, 3; Glee Club, 1, 2, 3, 4, Vice-President, 4; Kappa Delta Pi, 3, 4, Historian, 4; Associate Editor TECHNALA, 4; Singers' Club, 3.

EFFIE COWAN, B.S. . . . . Union Springs

Vice-President Class, 1; Chairman Freshman Commission, 1; Delegate to Y. W. C. A. Conference at Blue Ridge, N. C., 1; Senate, 1, 3, 4; Honor Roll, 1, 3; Secretary Executive Board, 2; Treasurer Y. W. C. A., 2; Honor Group May Day, 2; Y. W. C. A. Cabinet, 3; Assistant Editor TECHNALA, 3; Omicron Nu, 3; Editor Omicron Nu, 4; Home Economics Club, 1, 2, 3, 4, Editor, 4; Circulation Manager *Alabamian*, 4.

VIORENE CRUMLY, A.B. . . . . Fairfield

Birmingham Southern College, 1; International Relations Club, 2; League of Women Voters, 2, 3, President, 4; *Alabamian* Staff, 3, 4; Student Government Association, 4; Presidents' Council, 4; House President Ramsay, 4.

• The •  
SENIORS

HAZEL CUMBIE, A.B. . . . . Ozark

ELLODEE DAVIS, B.S. . . . . New Market

Executive Board Summer, 1; Home Economics Club, 1, 4; Honor Roll Summer, 1; Basketball, 1.

DOROTHY DAY, A.B. . . . . Selma

President Y. W. C. A., 4; Y. W. C. A. Cabinet, 2, 3; Senate, 3, 4; Association of Childhood Education, 2, 3, 4; President Sophomore Class, 2; Campus Character, 3; Honor Group, 2, 3; English Club, 2, 3; Freshman Commission, 1; Presbyterian Council, 1, 2, 3.

MARIE DELOACH, B.S. . . . . Thomasville

Social Service Club, 1, 2, 3, 4; Honor Roll, 2, 3; Senate, 4.

# • The • SENIORS



## OPINIONS

A real conversationalist; a good listener, sympathetic, reserved—deservingly popular.



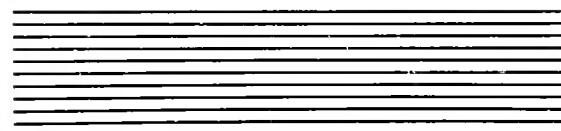
Glistening black hair, an unusual faculty for inspiring confidence in people, and a twinkle in her eye which ascertains an amused understanding of pranks.



Dot is the kind of person you ought to know. She's delightfully sweet without being sanguine; charmingly feminine without being coy; unusually accomplished without being conceited.



A sympathetic, yet firm, humanitarian; a charming combination of black hair and deep blue Oriental eyes.



OPINIONS

Evelyn, we'll always think of you as a most attractive, well-dressed little lady, who surprises us continually by having such a deep husky voice in a body so petite.



An efficient secretary, and dashingly stylish with your effective vividness.



A hearty appreciation of everything life has to offer, a jolly companion, and a good sport on all occasions.



The very essence of French vivaciousness; a petite figure, a radiant personality, and a winsome childishness.



EVELYN DENSON, B.S. . . . . Dothan

Freshman Commission, 1; Secretary Sophomore Council, 2; House President, 2; Home Economics Club, 1, 2, 3, 4; Vice-President, 3; Omicron Nu, 3, 4, Secretary, 4; Delegate to National Home Economics Convention, Detroit, 2; Honor Roll, 1, 2, 3; Advertising Manager TECHNALA, 3.

WYNELLE DUREN, B.S. . . . . Tarrant City

MRS. NATALIE EDGAR, B.S. . . . . Montevallo

JULIETTE FERRIER, B.S. . . . . Dora

Home Economics Club, 1, 2, 3, 4; Glee Club, 1, 2; French Club, 1, 2.

• *The* •  
S E N I O R S

• *The* •  
S E N I O R S

VELMA FINCH, A.B. . . . . Alberta  
Honor Roll, 2, 3; Delta Phi Alpha, 2, 3, 4; Treasurer, 3; President, 4;  
English Club, 3; Kappa Delta Pi, 4; Childhood Education Association, 3, 4;  
Presidents' Council.

SARA FLOREY, B.S. . . . . Vincent  
Biology Club, 2, 3; Mathematics Club, 4; French Club, 2; Latin Club, 3;  
Life Saving Corps, 2, 3, 4.

WILLIE PEARLE GAMMELL, B.S. . . . . Clayton  
Glee Club, 2, 3; Home Economics Club, 1, 2, 3, 4.

HELEN GLADNEY, B.S. . . . . Lineville



OPINIONS

Our little Dutch girl. We can so easily picture Velma in a blue Dutch costume with wooden shoes dancing a clog.



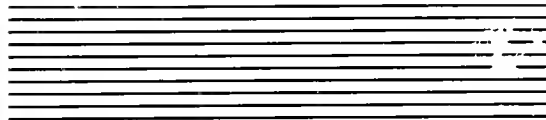
Modest, yet animated; appreciative, yet independent. Sara reminds us of bright log fires, shiny red apples, and subjective, intimate conversations.



A consistency in actions and affections, a dignity of carriage, and a halo of soft hair, combined with a determination of purpose are the qualities which make you an attractive individual.



Helen makes us think of outdoor sports; a disregard of cold winds; green and blue marbles; and orderly filed recipes.



OPINIONS

An infectious laugh, an analytical mind, a delightful sense of humor, and a discriminating friendliness.



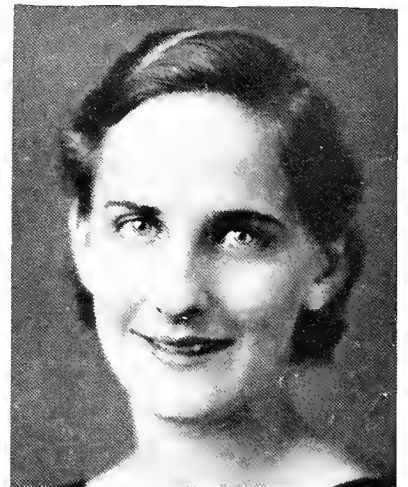
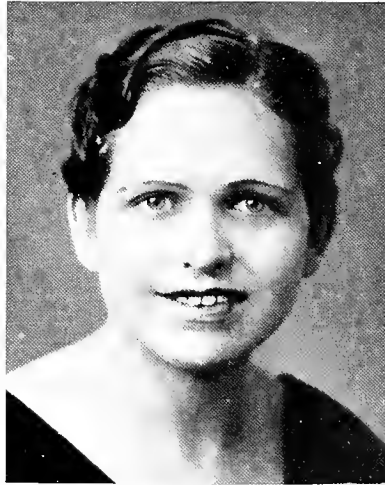
A wonderful facility of creativeness and the marvelous ability to inspire children with ambition.



A dimpled smile, a quick repartee, a telephone ringing, a tailored suit with an irresistible dash of red—these are the things which mean Marie to us.



An inviting smile, a naive expression, a love of fun, and an ideal for which to work—we admire you, Julia.



MARJORIE GOFF, B.S. . . . . Enterprise

Editor TECHNALA; Chairman Publication Board, 4; Kappa Delta Pi, 3, 4; Treasurer; Business Manager, TECHNALA, 3; Alabama Players, 2, 3, 4; Presidents' Council, 3, 4; Business Manager, Alabama Players, 3; Student Senate, 1, 2, 3, 4; Baseball, 2; Secretarial Club, 1, 2, 3, 4, President, 3; Forensic Club, 3, 4, Secretary, 4; Life Saving Corps, 2; Speech Club, 3, 4, Secretary 4; Honor Roll, 1, 2, 3; Delegate National Scholastic Press Association, Chicago.

ESSIE MAE HALL, B.S. . . . . Midway

President Biology Club, 2; Honor Roll, 1, 2, 3, 4; President Home Economics Club, 4; Omicron Nu, 3, 4, Vice-President, 4; Kappa Delta Pi, 4; B. S. U. Council, 4.

MARIE HARPER, B.S. . . . . Beatrice

Secretarial Club, 2, 3; Glee Club, 2, 3; Hall Chairman, 1; Home Economics Club, 1, 2; Singers' Club, 3.

JULIA HARRIS, B.S. . . . . Camden

• The •

SENIORS

KATHERINE HARRIS, B.M. . . . . Winfield

MARGARET HARTUNG, B.M. . . . . Cullman

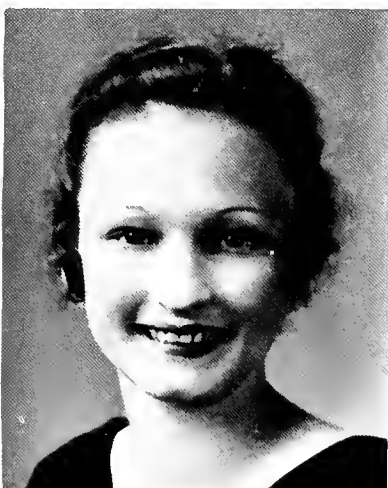
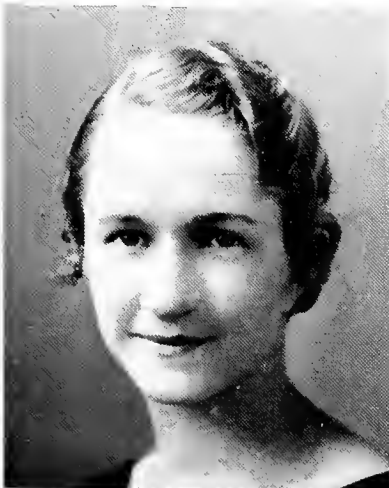
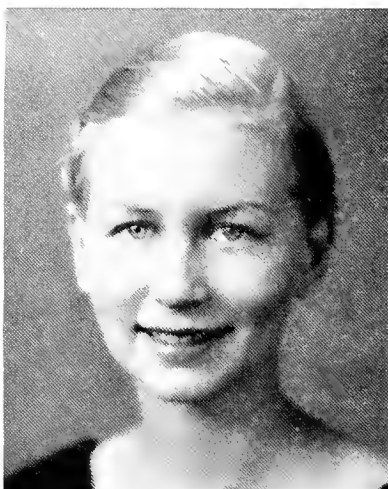
Student Senate, 1, 2, 3, 4; Music Club, 1, 2, 3, 4; Treasurer Senate, 2; Honor Roll, 1, 2, 3, 4; Kappa Delta Pi, 3, 4; *Alabamian* Reporter, 3, 4.

AMY HENDERSON, B.S. . . . . Gaylesville

ELIZABETH HICKS, B.S. . . . . Selma

Basketball, 1, 2, 3, 4; Volley Ball, 4; Baseball, 1, 2, 3, 4; Hockey, 1, 2, 3, 4, Varsity, 2, 3; Physical Education Club, 1, 2, 3, 4; Athletic Board, 3, 4; Honor Roll, 1, 2, 3, 4; Senate, 2.

# • The • SENIORS



## OPINIONS

Cleanly washed children; football games; sport car and gay clothes—these are the things which remind us of you, Kat.



A piercing memory, an ability to achieve much with little effort, and a delightful imaginativeness.



Civic activities; sewing circles; a flower garden and a well proportioned meal.



Dancing girls before vari-colored footlights in artistically scanty ballet dresses, led by one dancer swaying gracefully to the rhythmical music—you, Billie, will be the leader!



OPINIONS

Lena Mae, you are the essence of serene dignity. You are admired for your varied activities and accomplishments, your sense of fairness, and your success as President of Student Government.



A veritable school of information, an amazing sense of humor which ridicules herself and sympathizes with others—we expect marvelous achievements of you, Dot.



An intelligent forehead — a fragility in appearance—a sympathetic understanding—a love of humanity.



An independence of public opinion; an individual in thought, action and behavior; and a self-reliance which will give Mary Fran confidence in any of her undertakings.



LENA MAE HIGH, B.S. . . . . Bessemer  
 Vice-President Student Government, 3; President Student Government, 4; Executive Board, 2, 3, 4; Freshman Commission, 1; Y. W. C. A. Cabinet, 2; Delegate to Blue Ridge, 2; Social Service Club, 1, 2, 3, 4, Vice-President, 3; Presidents' Council, 4; Delegate N. S. F. A., New Orleans, 3; Delegate Southern Student Government Conference, Lynchburg, Va., 3; Volley Ball, 2; Campus Character, 3.

DOROTHY HIX, A.B. . . . . Birmingham  
 Kappa Delta Pi, 3, 4; Student Senate, 4; Honor Roll, 2, 3, 4; Latin Club, 3; French Club, 2, 3, 4.

MARY HOLBROOK, B.S. . . . . Akron  
 Physical Education Club, 1, 2, 3, 4; Scribblers' Club, 2, 3, 4, President, 4; Honor Roll, 1, 2, 3, 4; Kappa Delta Pi, 3, 4, Recording Secretary, 4; Presidents' Council, 4; Class Secretary, 4; *Alabamian* Staff, 3, 4; Camp Councilor, 4; Athletic Board, 4; Basketball, 1, 2, 3, 4; Baseball, 1, 2, 3, 4; Hockey, 2; Life Saving Corps, 2, 3, 4; Senate, 2.

MARY FRANCES HOLSTUN, B.S. . . . . Waverly.

• The •  
 SENIORS



MARGARET HORTON, B.S. . . . . Sumiton

Home Economics Club, 1, 2, 3, 4; Biology Club, 2, 3, President, 3; Glee Club, 3; International Relations Club, 4; Junior League of Women Voters, 4; Honor Roll, 2; Omicron Nu, 4.

JENNIE HOWLE, A.B. . . . . Wetumpka

Honor Roll, 1, 2, 3; Kappa Delta Pi, 3, 4; Math Club, 2, 3, 4, Secretary, 3, President, 4; Senate, 4; Presidents' Council, 4; Class Treasurer, 4.

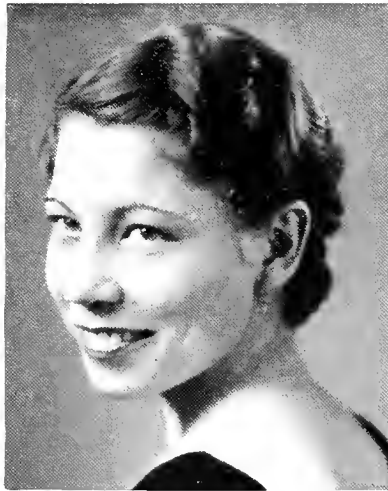
SADIE HUMBER, B.M. . . . . Fayette

Freshman Commission, 1; Glee Club, 2, 3, 4; Music Club, 2, 3, 4.

LUCILLE JOHNSON, B.S. . . . . Evergreen

Home Economics Club, 1, 2, 3; Biology Club, 2; Executive Board Summer, 2.

# • The • S E N I O R S



## OPINIONS

A bowl of blue hyacinths on a neatly set breakfast room table; a well balanced and wonderfully prepared breakfast waiting for the family.



An assurance of dependability, a deliberateness of manner, an achievement at the end of each undertaking.



A feminine Paul Whiteman; a suitable model for one of Adrian's creations; and a superb indifference.



Blue checked gingham curtains for a spotless kitchen; orderliness for the household; a quiet, decisive thoroughness.



OPINIONS

A lovable bit of petiteness; an enviable mop of red curls; a most admirable little student, and an amazing amount of capability.



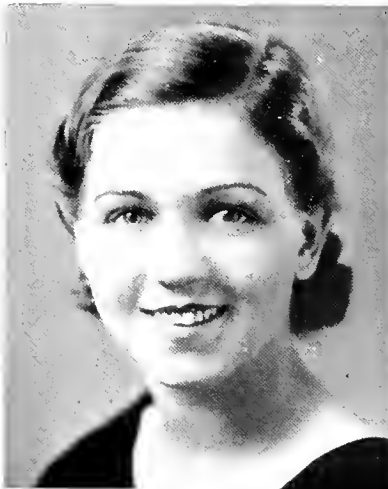
Tapestry, sophisticated light fixtures, what-nots and sachets are personality keynotes to you, Frances,



A matter-of-factness of thought, a decisiveness of manner, and a love of children—a grand homemaker—our Marjie.



A genius in nonsensical wit; a severe judge of self and humanity, and a critical pride in personal appearance.



MARY HANNAH JOHNSON, B.S. . . . . Dothan

Y. W. C. A. Freshman Commission, 1; Morning Watch Chairman, 2; Secretary Y. W. C. A., 3; Program Chairman, 4; Omicron Nu, 3, 4, President, 4; Home Economics Club, 1, 2, 3, 4; Vice-President State Y. W. C. A., 4; President State Home Economics Clubs, 3, 4; Delegate National Omicron Nu Conclave, Milwaukee, 3; Delegate State Y. W. C. A. Convention, Tuscaloosa, 3, Birmingham, 4; Honor Roll, 3.

FRANCES JONES, A.B. . . . . Caldwell

Physical Education Club, 1, 2; International Relations Club, 4; Junior League of Women Voters, 4; Hockey, 1, 2, 3; Volley Ball, 1; Tennis, 4.

MARJORIE JONES, B.S. . . . . Dothan

Y. W. C. A. Freshman Commission, 1; Sophomore Council, 2; Student Senate, 3; Home Economics Club, 1, 2, 3, 4.

MILDRED JONES, B.S. . . . . Eufaula

Glee Club, 1, 2, 3; Chorus, 1; Home Economics Club, 1, 2, 3, 4; House President Summer, 3; Biology Club, 2, 3.

• The •  
S E N I O R S

LULU JORDAN, B.S. . . . . Selma

MARY KERR, B.S. . . . . Birmingham

Glee Club, 2, 3; Home Economics Club, 1, 2, 3, 4; Singers Club, 3; Executive Board Summer, 3.

RACHEL KEYNTON, B.S. . . . . Montgomery

Honor Roll, 1, 2; Student Senate, 2, 3; Publication Board, 2; Executive Board Summer, 2, Vice-President, 3; Secretarial Club, 1, 2, 3, 4, President, 3; Kappa Delta Pi, 4.

EMILY STARR KIRKSEY, B.S. . . . . Aliceville

Vice-President Sophomore Class, 2; Vice-President Junior Class, 3; Chairman Sophomore Council, 2; Freshman Commission, 1; Freshman May Day Representative, 1; Junior May Day Representative, 3; Home Economics Club, 1, 2, 3, 4; Delegate State Y. W. C. A. Convention, 2; Biology Club, 3.

# • The • SENIORS



## OPINIONS

A swing under an oak tree; a romantic novel nearby; an individual who loves peace.



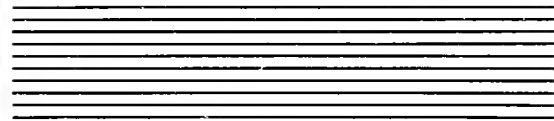
A versatility in achievements; a dancer; a musician; a clever seamstress—a most well rounded girl.



Starched collars; dark worsteds; neat appearance; a rich, resonant voice; a friendly cordialness; and two hands ready for the business world.



Blond curling hair; a clever retort; a keen sense of fun; a stylishness of appearance; an amusing flippancy.



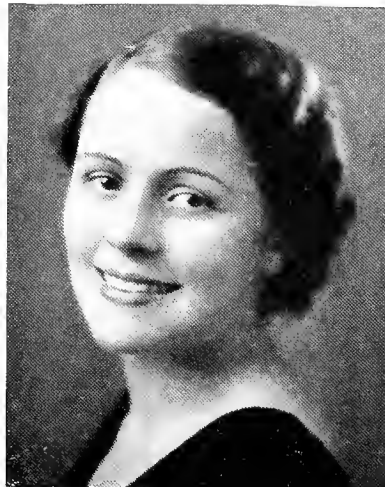
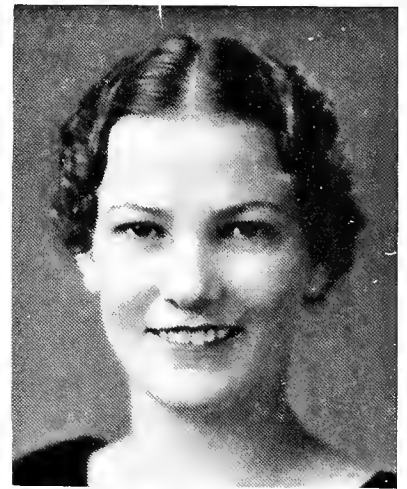
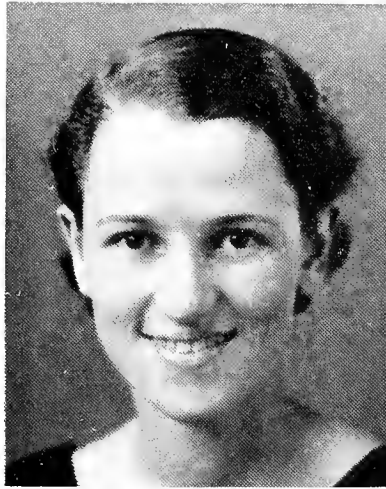
OPINIONS

Ida is brimming over with pep, enthusiasm and college spirit. She has a sincere devotion to and an appreciation of her friends.

Frances is a sophisticated modernist, a clever conversationalist, and a self-reliant business woman. She has a serious flippancy—even about numerous love affairs. A thoroughly delightful personality!

A poet—a columnist—an actress—Grace does everything—and well! She is a most lovable person and is recognized and admired by students and teachers alike.

Willie has an amused attitude toward life. A touch of her cynicism is shown in her flamboyant use of red earrings and bright nail polish.



IDA KIRKWOOD, B.S. . . . . Laurel, Mississippi  
Y. W. C. A. Cabinet, 4; Treasurer Junior Class, 3; Publications Board, 4; Senate, 4; Secretarial Club, 1, 2, 3, 4; Secretary Publications Board, 4.

FRANCES KOCH, B.S. . . . . Demopolis  
Secretarial Club, 1, 2, 3, 4; Business Manager, *Alabamian*, 3; Senate, 4; Business Manager, *TECHNOLA*, 4; Secretary Junior Class, 3; Delegate to N. S. P. A. Convention, Chicago, 4.

GRACE LANE, A.B. . . . . Milstead  
Scribblers' Club, 1, 2, 3, 4, President, 3; *Alabamian* Staff, 2, 4; Alabama Players, 3, 4; Glee Club, 1, 2; Forensic Club, 3; Presidents' Council, 3, 4; College Theater Council, 3, 4, Business Manager, 3; Honor Group, 3; President Student Senate, 4; *Tower* Staff, 3, 4; Honor Roll, 3.

WILLIE LETSON, B.S. . . . . McCalla  
Honor Roll, 2, 3, 4; Senate, 3; Secretarial Club, 2, 3, 4.

• *The* •  
SENIORS

MILDRED LLOYD, B.S. . . . . Selma

President Athletic Association, 4; Volley Ball, 1, 2, 3, 4, Varsity, 2, 4; Basketball, 1, 2, 3, 4, Varsity, 1, 2, 3; Hockey Varsity, 1, 2, 3; Baseball, 1, 2; Honor Roll, 1, 2, 3, 4; Senate, 1, 2, 3, 4; Senate, 1, 2, 3, 4; Freshman Representative to Athletic Board, 1; Physical Education Club, 1, 2, 3, 4; Class Athlete, 1.

EFFIE MAE LOGAN, B.S. . . . . Guin

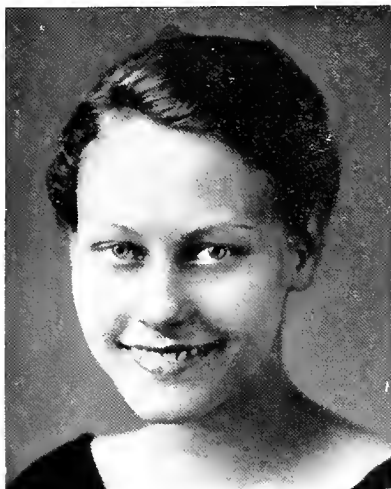
ANN LOVILL, A.B. . . . . Huntsville

Executive Board, 1, 4; Senate, 4; Kappa Delta Pi, 4; Y. W. C. A. Cabinet, 2; Vice-President Athletic Board, 3; Mathematics Club, 2, 3, 4; Vice-President, 3; Basketball, 3; Baseball, 3; Hockey, 1, 2, 3; Volley Ball, 2, 3, 4; A. C. Club, 3; Representative to Methodist Student Conference, 3, 4; Assistant Editor, TECHNICAL, 4; Honor Roll, 1, 2, 3; Honor Group May Day, 2.

SARA LOU McDONALD, B.S. . . . . Birmingham

Freshman Commission, 1; Y. W. C. A. Cabinet, 2, 3; Social Service Club, 1, 2, 3, 4, President, 4; Executive Board, 3, 4; Treasurer, 3; Presidents' Council, 4.

# The SENIORS



## OPINIONS

A complete devotee to athletics; a bronze flash in white slacks on any sports field; a cooperating teammate and a powerful opponent.



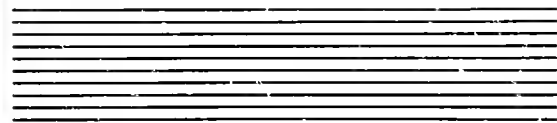
Test tubes, organisms and violet gentian—our bacteriologist is at work.



An intense thoroughness of physical and mental activity; a hero worshipper with few, but well-deserving, idols.

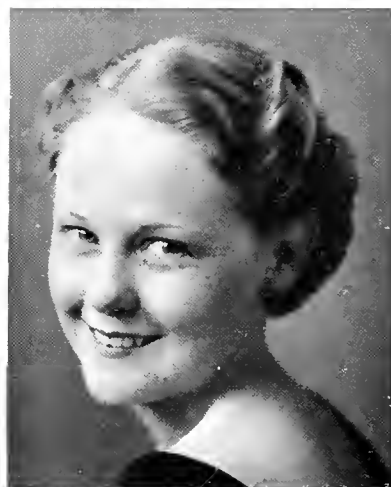


"Dink" has a well defined sense of adherence to duty, a sense of pleasure which delights in the simple, a sense of humor which smiles indiscriminately at self or at associates.



OPINIONS

Your individual laugh, your sincerity to your friends, and your unselfishness with your talents, Annie Ford, have made you outstanding in your two years on our campus.



A grand piano; a childish laugh; a sophisticated evening gown; a red geranium in a window and new shining dishes. Margaret, if your grades were set to music they would strike one note—a-a-a-a.



A meek freshman; a shy young fiancée; a blushing bride; a devoted young wife—we wish you much happiness, Mr. and Mrs. Mahaffey.

Connie is our modern Priscilla with her subtle cleverness and her self-relying personality.

ANNIE FORD McELROY, A.B. . . . . Cuba

MARGARET McELROY, B.M. . . . . Cuba  
 Kappa Delta Pi, 4; Alpha Pi Omega, 1; Orchestra, 1, 2, 3, Vice-President, 2;  
 Glee Club, 1, 2, 3; Calkins Music Club, 1, 2, 3, 4; Honor Roll, 1, 2, 3, 4;  
 Y. W. C. A. Cabinet, 3; Senate, 4.

MRS. MARY LEE MAHAFFEY, A.B. . . . . Montevallo  
 Elementary Educational Council, 1, 2, 3, 4; English Club, 3, 4; Religious  
 Education Club, 4; Honor Roll, 3.

CONSTANCE MARSDEN, A.B. . . . . Bound Brook, New Jersey  
 Honor Roll, 3; Vice-President Elementary Council, 3; President Association  
 of Childhood Education, 4; English Club, 2, 3; Executive Board, 3.

• The •  
 SENIORS

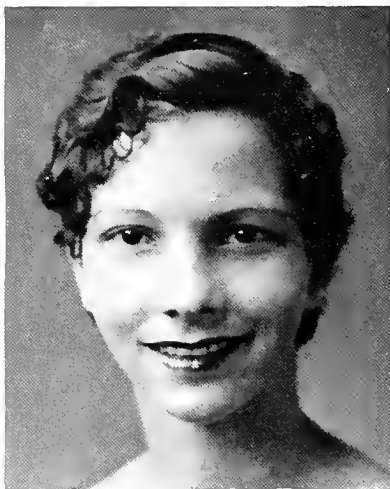
EDNA MARTIN, A.B. . . . . Cullman  
 International Relations Club, 1, 2, 3, 4; League of Women Voters, 2, 3, 4;  
 Secretary International Relations Club, 3, President, 4; Presidents' Council, 4.

ELIZABETH MILLER, A.B. . . . . Mobile  
 English Club, 4; Junior Play, 3.

ADA MORGAN, A.B. . . . . Selma  
 Honor Roll, 2, 3; English Club, 3; Childhood Education Association, 3, 4;  
 Treasurer Senate, 3; House President Hanson, 3.

GLADYS MORRISON, B.S. . . . . West Biocton  
 Junior League of Women Voters, 4; Biology Club, 2; Glee Club, 2, 3;  
 International Relations Club, 4; Home Economics Club, 1, 2, 3, 4.

• *The* •  
 S E N I O R S



OPINIONS

Edna is never wasting time; she is always hurrying from one thing to another, and has a clear-cut picture of what she is doing.



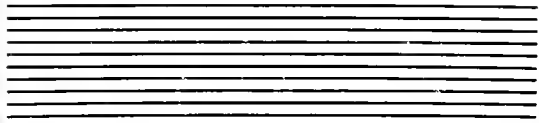
Elizabeth makes even the modernists feel mid-Victorian in her disregard of traditions and in her deliberate pursuit of pleasure in her own charmingly individual way.



Alice-blue slippers; a serious novel; a reassuring friendliness; a quiet, quaint room with velvet drapes at the window.



A question for each new idea, a sincere reason for asking, and two capable hands to do what you think is right, make you, Gladys, an asset to your classes.



OPINIONS

Gladys, with her firm determination, her naive independence, and her musical ability, has made a place for herself here on our campus.



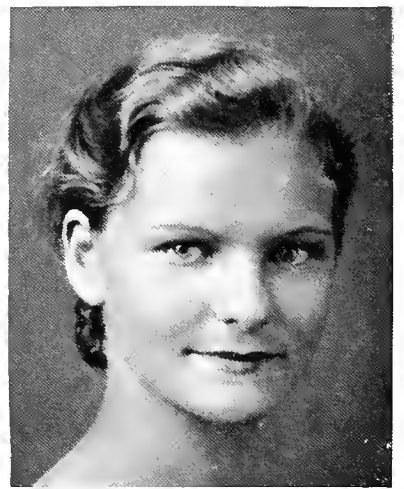
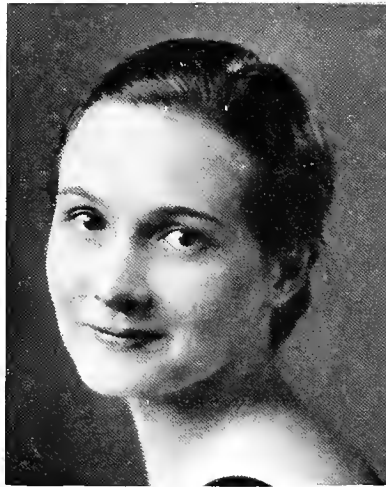
A magician with a needle; a serious sense of responsibility; an unselfishness with talents; a sympathetic understanding of human nature,



We never think of you, Estelle, without remembering your unaffected manner and your ability to "be yourself." Success, happiness, and contentment—all these things and more we are wishing for you.



"A medicine man for our blues;" an outstanding athlete; a versatile individual; and a distinctive plait for her hair.



MRS. GLADYS MURPHREE, B.M. . . . . Cullman  
Glee Club, 2; Chorus, 3, 4; Calkins Music Club, 2, 3, 4; Junior League of Women Veters, 3, 4.

SUDIE BATES NAGELEY, B.S. . . . . Ensley

ESTELLE NEWBERRY, B.S. . . . . Camden  
Social Service Club, 1, 2, 3, 4; Honor Roll, 3; Senate, 4; Basketball, 2; Hall Chairman, 1.

LENA OATES, B.S. . . . . Eufaula  
Basketball, 2, 3, 4; Volley Ball, 3, 4; Baseball, 2, 3, 4; Hockey, 3, 4; President Physical Education Club, 4; Presidents' Council, 4; Athletic Board, 4; Physical Education Club, 1, 2, 3, 4.

• The •  
SENIORS



MRS. AGNES SCOTT OWEN, A.B. . . . . Abbeville  
 Glee Club, 1, 2, 3, 4; Latin Club, 2, 3, 4; Mathematics Club, 3, 4; Lyric  
 Ensemble, 3, 4.

TOM PARISH, B.S. . . . . Brundidge

MAUDE PARSONS, B.S. . . . . McCalla  
 Tennis, 3, 4; Basketball, 2, 3, 4; Volley Ball, 1, 2, 3; Baseball, 1, 2, 3, 4;  
 Hockey, 2, 3, 4; Physical Education Club, 1, 2, 3, 4; A. C. Club, 4.

HARRIET PETTUS, B.S. . . . . Huntsville  
 Honor Roll, 1, 2, 3; Hockey, 1, 2, 3; Volley Ball, 3; Biology Club, 2;  
 League of Women Voters, 4; International Relations Club, 4.

• *The* •  
 S E N I O R S



OPINIONS

A devoted couple; a quiet wedding; a deliriously happy bride and groom, to whom the Senior Class extends best wishes for a life of happiness.



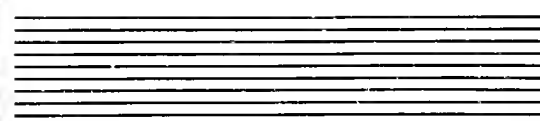
A baby-doll coloring; a contradictory boyish grin; a genuine love of good sports; and a corresponding good sportsmanship make you a popular student, Tom.



It is people like Maude, with a constancy of purpose and a genuine likeableness that make college friends pleasant to remember.



A brownness and a whiteness; a winsomeness and a defiance; a self-reliance and a groping—Harriet, you are a human jigsaw which fits together perfectly to make a most attractive picture.



OPINIONS

A pair of wide blue eyes, a kind and sympathetic love for her friends, a pleasing naivete—that's Lucie.



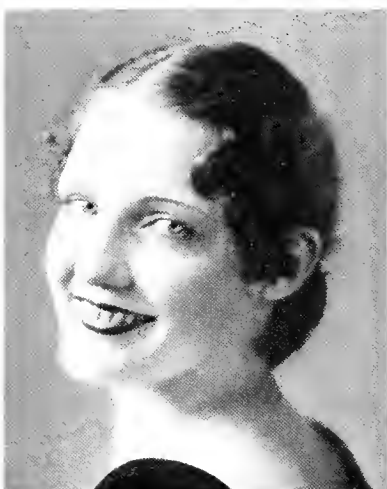
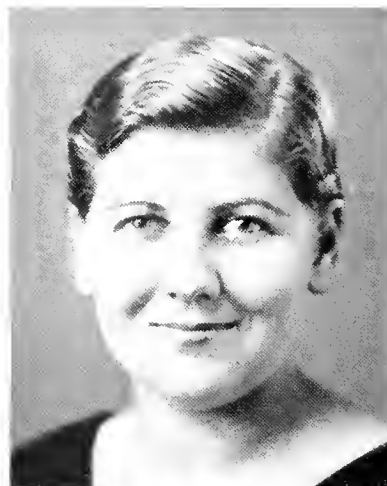
A well defined sense of wit, humor and fun; an individual friendliness to all; and a fascinating collection of what-nots.



The gods have been kind to you, Epie, endowing you with the most enviable of dispositions, a keen mind, and a large capacity for loving and being loved.



Everyone will remember you, Jessie Lee, for your stylish appearance, your beautifully kept hair, and your individual manner of talking.



LUCIE PICKETT, B.S. . . . . Montgomery  
Home Economics Club, 1, 2, 3, 4; Biology Club, 2, 3, 4; Hall Chairman, 2.

AGNES PLANT, B.S. . . . . Birmingham  
Executive Board, 2; Forensic Club, 2, 3, 4; Scribblers' Club, 2, 3, 4; Delegate Student Volunteer Convention, Buffalo, 2; Social Service Club, 3, 4; Senate, 4; President Presidents' Council, 4.

EVELYN POW, B.S. . . . . Woodward  
Honor Roll, 1, 2, 3, 4; French Club, 1, 2; Biology Club, 1, 2, 3, 4, Vice-President, 3; League of Women Voters, 4, Executive Council, 4; Senate, 3, 4, Treasurer, 3, 4; Publication Board, 3, 4; Chairman, 4; Kappa Delta Pi, 3, 4, Reporter, 4; Volley Ball, 1; Presidents' Council, 3, 4; Archery, 3, 4; Tennis Cbampion, 1; Physical Education Club, 1, 2.

JESSIE LEE RAINES, A.B. . . . . Fyffe  
Alabama Players, 2, 3, 4; Y. W. C. A., 3, 4; French Club, 1, 2, 3, 4, Secretary, 2, President, 3; Vice-President Senior Class, 4; Kappa Delta Pi, 4; Freshman Commission, 1; Speech Club, 2, 3, 4, President, 4; Presidents' Council, 4; Honor Roll, 1, 2, 3; College Theatre, 2, 3, 4.

• The •  
S E N I O R S

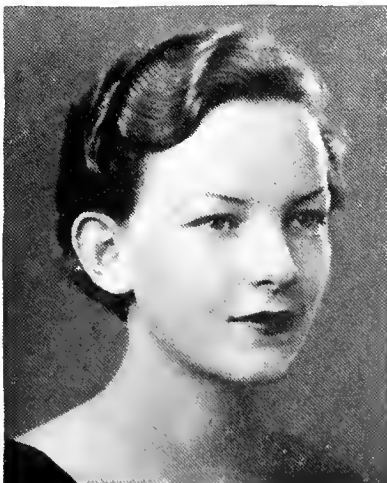
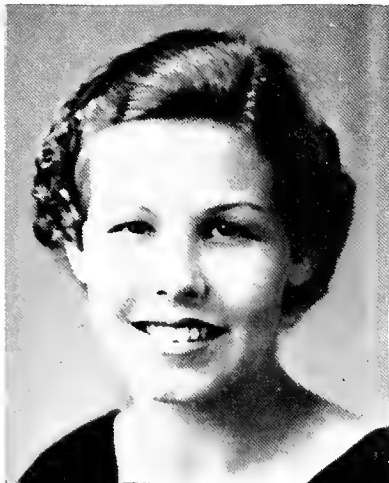
CAROLYN REDDOCH, B.S. . . . . Luverne  
 Central State College, Edmond, Oklahoma, 1, 2; Secretarial Club, 3, 4,  
 President, 4; Kappa Delta Pi, 3, 4; Corresponding Secretary, 4; Honor Roll,  
 3; Presidents' Council, 4; Business Manager, *Alabamian*, 4; Delegate to  
 N. S. P. A. Convention, Chicago, 4.

JUNE REID, B.S. . . . . Montevallo

ELEANOR RENNIE, A.B. . . . . Selma  
 Brenau College, 1, 2; President Senior Class, 4; President English Council, 4;  
 Kappa Delta Pi, 4; Alabama Players, 3, 4; College Theater, 3, 4; Speech  
 Club, 3, 4; Speech Chorus, 3, 4; Honor Roll, 3; Presidents' Council, 4;  
 Basketball, 4; Assistant College Night Leader, 4.

ELIZABETH ROBERTSON, A.B. . . . . Piedmont  
 French Club, 1, 2, 3, 4, President, 4; Honor Roll, 1, 2, 3, 4; Speech Chorus, 2;  
 Kappa Delta Pi, 3, 4, President, 4; *Alabamian* Staff, 3, 4; Senate, 3, 4;  
 Presidents' Council, 4.

• The •  
 S E N I O R S



OPINIONS

A silvered sophistication, intermingled with grace, charm, and poise, Carolyn, make you deserve the name of "a perfect lady."



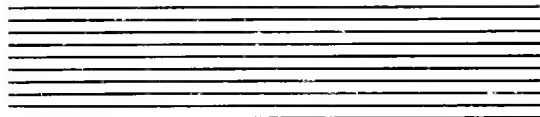
June is most talented and versatile—she flirts, she sings, she dances—and it is even rumored that on rainy days she sews.



To you, Rennie, we doff our hats in admiration for your accomplishments. You have achieved more in two years at our college than a great number of us have in four. Your talents have made you one of Alabama College's most outstanding students.



Clever clothes; languid gestures; drooping, fluttering eyelids; and indifference to the majority of people.



OPINIONS

Unusual eyes, fresh blondness, starched linen dresses, and a ready attractive smile.



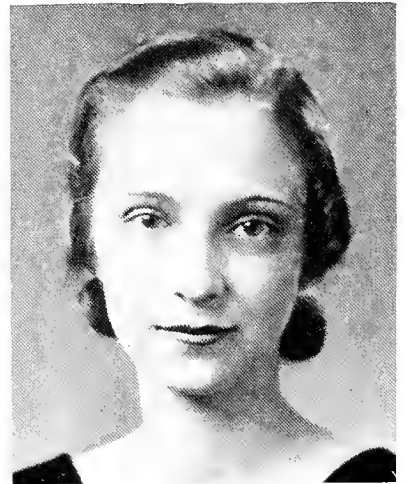
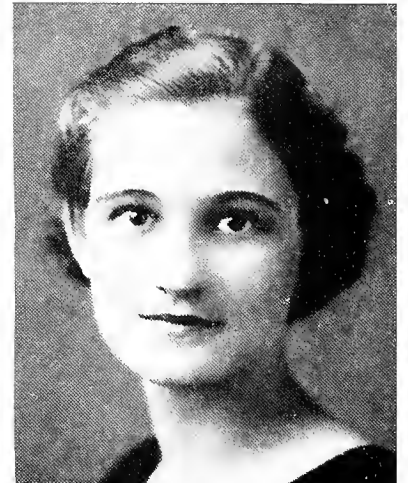
Hermoine's steady, penetrating gaze leaves one hoping they are being appraised favorably. She easily combines her musical ability with a winning aptitude as an actress.



A clever remark, a long love letter, and the ability to accomplish much with little effort.



Cherokee's subtle, fragile charm is a lovely mixture of the fanciful and the real. We are fascinated by her delightful originality and her glamorous stage impersonations and we love her for her unaffected sweetness.



MARY ROBINSON, A.B. . . . . Five Points  
*Alabamian* Reporter, 3, 4; Volley Ball, 1, 2, 3, 4; Basketball, 2, 3, 4;  
 Baseball, 1, 2, 3; English Club, 3; English Council, 4.

HERMOINE ROE, B.M. . . . . Mobile  
 Music Club, 2, 3, 4; Lyric Ensemble, 4.

JEWEL WEZE SAWYER, A.B. . . . . Monroeville  
 Mathematics Club, 2, 3, 4.

CHEROKEE SHIRLEY, A.B. . . . . Tuscaloosa  
 Freshman Commission, 1; Secretary Y. W. C. A. Cabinet, 2; Best Actress, 2;  
 Campus Character, 3; Vice-President Alabama Players, 2, 3, 4; Theatre  
 Council, 3; Senate, 4; May Day Honor Group, 3; English Club, 3, 4;  
 Representative to Poetry Contest, 2; Purple College Night Leader, 4.

• The •  
 SENIORS

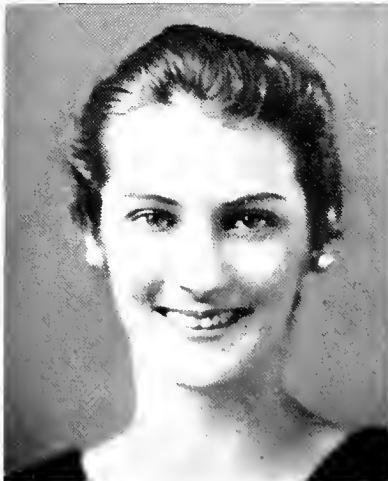
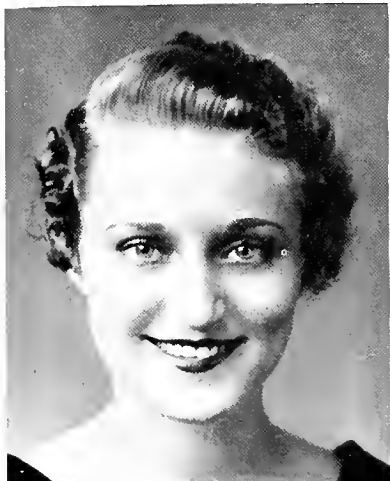
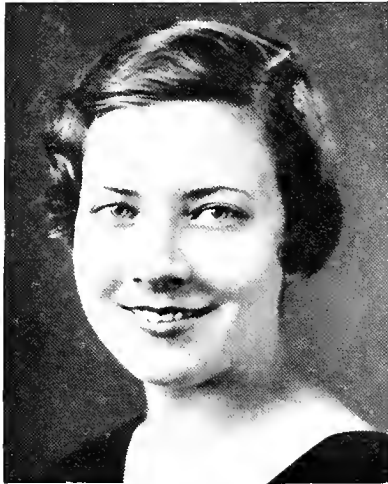
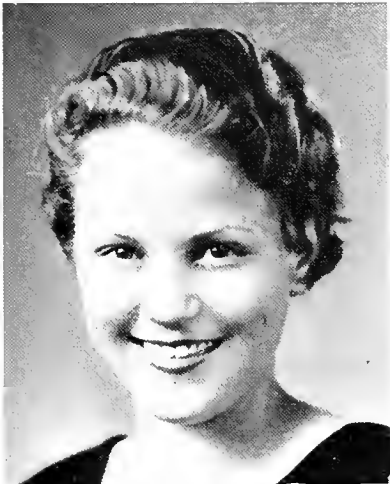
• The •  
S E N I O R S

BILLIE SIMS, B.S. . . . . Renfroe  
Kappa Delta Pi, 4; Class Treasurer, 1, 2; Volley Ball, 1, 2, 3, 4; Basketball, 1, 2, 3, 4; Hockey, 1, 2, 3, 4; Baseball, 1, 2, 3, 4; Class Athlete, 3; Physical Education Club, 1, 2, 3, 4; A. C. Club, 4; Freshman Commission, 1; Secretary Athletic Board, 4; Honor Roll, 2, 3; Hiking Councilor, 2.

JANIE KATE SMITH, A.B. . . . . Gadsden

JEANNETTE SNEAD, A.B. . . . . Center  
B. S. U. Council, 3; League of Women Voters, 2, 3, 4, President, 3; International Relations Club, 2, 3, 4; Executive Board, 4; Presidents' Council, 3.

ELIZABETH SOUDERS, A.B. . . . . Birmingham  
Volley Ball, 2, 3, 4; Hockey, 2, 3, 4; Baseball, 2, 3, 4; Honor Roll, 2, 3; Alabama Players, 1, 2, 3, 4, Business Manager, 3, 4; *Alabamian* Staff, 3, 4; Associate Editor, 4; French Club, 2, 3, 4; Reporter for Athletic Board, 3; Glee Club, 2, 3, 4; Quartette, 4; Honor Group May Day, 3; Basketball, 4.



OPINIONS

A most amazing enigma; an infantile expression; a determination of purpose; a versatility in achievements; and an appealing wistfulness that wins friends—that's Billie.



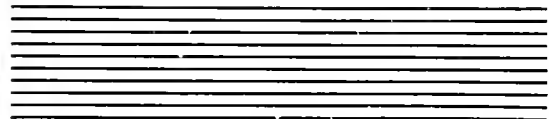
A brilliant student; an appreciative nature; and a marvelous self-control which forbids her interfering in friends' affairs.



Jeannette is one of the most universally liked girls on our campus—or perhaps we should say one of the most "University" liked girls!



A cup of dynamic energy; a basket of assorted achievements; a slender figure; a variety of interests; and two elongated earrings—that's Ebby!



OPINIONS

"Sparky," we love you for your friendliness, your nice smile, and your own versatile self.



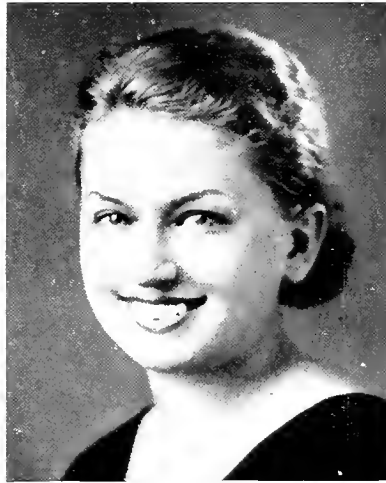
A trim figure in a swagger suit; two gray eyes focused on invisible objects and this world is forgotten.



A lovely soprano voice, a soothing quietness, and an unusual ability for making and keeping friends.



A spinning wheel in the corner; a kettle singing; a sincere heart which loves it all.



MILDRED SPARKS, B.S. . . . . Sayre  
 Judson College, 1; Class President, 3; Tennis Champion, 2, 3; Athletic Board, 2, 3; Class Athlete, 2; Volley Ball, 2, 3, 4; Basketball, 2, 3, 4; Baseball, 2, 3; A. B. C. Life Saver's Badge, 3; Hockey, 2, 3; Scribblers' Club, 3, 4; Secretary, 4; College Theatre, 4; May Day Honor Group, 3.

ELSIE SPEARMAN, B.S. . . . . Birmingham  
 Orchestra, 1; Home Economics Club, 1, 2, 3, 4; Volley Ball, 2, 3; Basketball, 2, 3, 4.

MARY ALMA STONE, B.M. . . . . Hurtsboro  
 Glee Club, 1, 2, 3, 4; President, 4; Calkins Music Club, 1, 2, 3, 4; Music Council, 4; Presidents' Council, 4; Alabama College Representative to At-water Kent Contest, 3; Singers' Club, 3.

MARY CLAIR STUART, B.S. . . . . Pine Apple

• *The* •  
 SENIORS

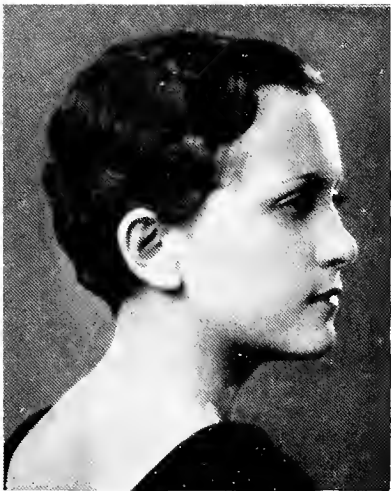
• The •  
S E N I O R S

EUNICE THOMAS, B.S. . . . . Atmore  
Editor *Alabamian*, 4, Associate Editor, 3, Advertising Manager, 2; Forensic Club, 2, 3, 4, Vice-President, 4; Intercollegiate Debating, 2, 3; Delegate N. S. P. A. Convention, Chicago, 4; Assistant College Night Leader, 4.

TERESA THOMAS, B.S. . . . . Birmingham  
Home Economics Club, 1, 2, 3, 4; Honor Roll Summer, 3; Glee Club, 2, 3; Senate, 3, 4.

LILLIAN VENTRESS, A.B. . . . . Clayton

HAZEL WALDROP, B.S. . . . . Jasper  
Home Economics Club, 1, 2, 3, 4.



OPINIONS

A dash of black wavy hair, two languid brown eyes, a pinch of smoothly tanned cheeks, lips twisted into an ironical smile, mixed with one adorable figure and a big cup of personality—  
Eunice Thomas!



A quiet smile; an unlimited supply of patience; efficiency—  
no end.



An attractive brunette who enjoys her friends and good books without disturbing the world.



A distinctiveness in tastes, a keen sense of humor, and a life time supply of originality.



OPINIONS

A red wool dress setting off to advantage a colorful brunette beauty, attractive well-shaped hands, and a sincere appreciation of lovely things.



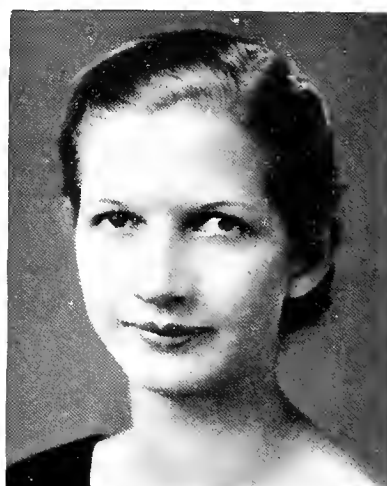
A reserved aloofness combined with a charmingly flirtatious smile; a clear bell-like voice; and a decided talent as an interpreter of characterizations.



A trim sport dress, a reserved friendliness, a smooth, set wave, and a thoughtful smile that breaks slowly and ripples over her face.



A brisk stride, a look of capable determination and a colorful sense of humor has endeared Anne to all her friends.



LOUISE WALSH, B.S. . . . . Birmingham

IRIS LEE WALTON, A.B. . . . . Bessemer  
Alabama Players, 1, 2, 3, 4; Speech Club, 2, 3, 4, Treasurer, 4; Speech Chorus, 2, 3, 4; French Club, 2, 3; College Theatre Council, 2, 3.

JUANITA WARR, B.S. . . . . Louisville  
Home Economics Club, 1, 2, 3, 4; *Alabamian* Staff, 3; League of Women Voters, 4; International Relations Club, 4; Biology Club, 3.

ANNE WATSON, B.S. . . . . Tuskegee

• The •  
SENIORS



JESSIE WHITEHEAD, B.S. . . . . Hamilton

MARY WHORTON, B.M. . . . . Gadsden

Glee Club, 2, 3, 4, Assistant Business Manager, 3; Calkins Music Club, 2, 3, 4, President, 3; Business Manager Senior Class, 4; Double Trio, 4; Secretary Music Council, 3.

MABEL WILDER, B.S. . . . . Dadeville

Volley Ball, 1, 2, 3, 4; Basketball, 1, 2, 3, 4; Hockey, 1, 2, 3, 4; Baseball, 1, 2, 3, 4; Tennis, 1, 2, 3, 4; Swimming, 4; Life Saver, 1, 2, 3, 4; Physical Education Club, 1; Art Club, 2, 3, 4; A. C. Club, 2, 3, 4; Biology Club, 2; Archery, 4.

SARA AGNES WILKES, B.S. . . . . Dothan

Glee Club, 2, 3; Life Saver, 2, 3; Home Economics Club, 1, 2, 3, 4; Class Cheer Leader, 2.

# • The • SENIORS



## OPINIONS

Hands busy with sewing; quiet acceptance of fate; a sincere word of sympathy; a flower garden with yellow daffodils.



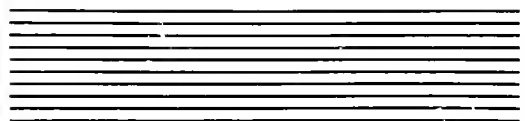
Your quaintness, your calmness, your retiringness, and your sympathetic understanding make you, Mary, a lovely little girl.



A refreshing sense of fun, an unlimited supply of curiosity, and an unusual athlete.



A flying ride to catch a train; cleverness at dispelling work; a vivid odor of fresh perfume; a red suede jacket; a startling question.





## OPINIONS

Lois combines a thoughtfulness, an unselfish gesture, and a love of good books with a keen observation of the ever-present panorama of college life.



"Jo" has such a carefree disposition, such a nice personality, and such an honest desire to make everything she attempts successful.



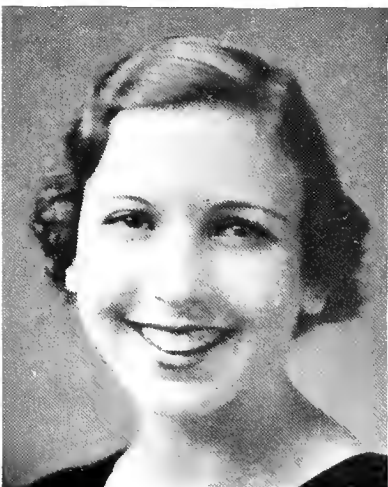
A dusky, glowing beauty, a delightful sense of humor, and a Vogue-magazine charm places Mary Ellen in a most enviable position.



A reserved dignity combined with a sense of fitness and a charming wit reminds us of Blennie.



We like you, Katherine, for your sheer delight in living, your frank, natural individuality and your many versatile capabilities.



LOIS WILLOUGHBY, B.S. . . . . Gordon  
Art Club, 1, 2, 3, 4, Vice-President, 4; B. Y. P. U. Council, 1; Biology Club, 3.

JOSEPHINE WOODWARD, B.S. . . . . Birmingham  
Physical Education Club, 1, 2, 3, 4, Vice-President, 3; Tennis, 2, 3, 4; Swimming Counselor, 3; Athletic Board, 3; *Alabamian* Staff, 4; Alabama Players, 3, 4; Volley Ball, 2, 3, 4; Basketball, 2, 3, 4; Hockey, 2, 3, 4; Baseball, 1, 2, 3, 4; Swimming, 1, 4; A. C. Club, 3, 4; A. R. C. Life Saver 1, 2, 3, 4.

MARY ELLEN WORTHY, A.B. . . . . Alexander City  
Beauty Section TECHNALA, 1, 4.

BLENNIE YOUNGBLOOD, B.S. . . . . Birmingham  
Birmingham-Southern College, 1; International Relations Club, 2, 3, 4; Social Service Club, 3, 4; Honor Roll, 3, 4; *Alabamian* Staff, 3, 4; Senate, 4.

KATHERINE ZADEK, A.B. . . . . Montgomery  
Peabody College, 1; Assistant Editor *Alabamian*, 3, 4; TECHNALA Staff, 4; Senior Volley Ball, 4; Basketball, 4.

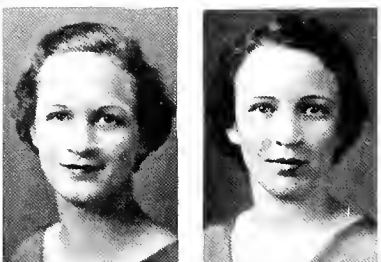
# • The • SENIORS



*The*

J U N I O R S





# The JUNIORS

## Members

- ELEANOR ALLEN . . . . . LaFayette
- BEATRICE ALLRED . . . . . Lincoln
- ELIZABETH ASEURY . . . . . Bessemer
- JULIA BARNES . . . . . Mobile
- EMMA BEATY . . . . . Louisville
- KATHRYN BILBRO . . . . . Alabama City
- ALINE BLAIR . . . . . Hartselle
- MARJORIE BLISS . . . . . Birmingham
- SARA BRADFORD . . . . . Hollywood
- RETHA POLK BROWN . . . . . Montevallo
- TESSIE BROWN . . . . . Montevallo
- AUTRESS BUSBY . . . . . Guin

# The JUNIORS

## Members

- CHARLOTTE CARMICHAEL . . . . . Newton  
 PEARL CATER . . . . . Lincoln  
 JIMMIE LEE CHAMBERS . . . . . Birmingham  
 VIVIAN CHANDLER . . . . . Andalusia  
 FRANCES CLAY . . . . . Hackleburg  
 MILDRED COCHRANE . . . . . Wilton  
 GLOE COONER . . . . . Jasper  
 HAZEL COTION . . . . . Cordova  
 LOUISE CROW . . . . . West Blocton  
 MAUDE DAVIS . . . . . Prattville  
 GRACE DREADEN . . . . . Evergreen  
 EVA DUNAWAY . . . . . Montevallo





# The JUNIORS

## Members

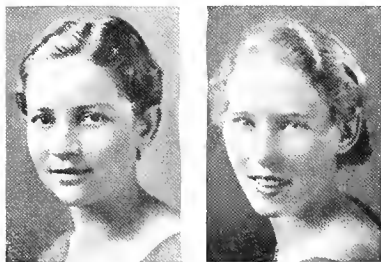
- BERTHA ELLIS . . . . . Columbiana  
 LAURA ENSLEN . . . . . Ozark  
 BEBE FANT . . . . . Macon, Miss.  
 JESSIE FORREST . . . . . Birmingham  
 DAISY FULLER . . . . . LaFayette  
 ELNORA GAMMAGE . . . . . Birmingham  
 ALICE GREEN . . . . . Fairfield  
 JULIA MAE GRESHAM . . . . . Montgomery  
 WATANA GROVER . . . . . Bessemer  
 MILDRED HALL . . . . . Dothan  
 MILDRED HART . . . . . Andalu ia  
 VIRGINIA HINES . . . . . Standing Rock

# The JUNIORS

## Members

- MARY CLYDE HUEY . . . . . Hartford  
 EDITH IVERY . . . . . Wetumpka  
 DELLA MAE JAMES . . . . . Birmingham  
 LILLIE MAE JOHNSON . . . . . Notasulga  
 NORMA KING . . . . . Valley Head  
 OPAL LANDRUM . . . . . Quinton  
 LESLIE LEATHERWOOD . . . . . Hayneville  
 FRANCES LEE . . . . . Fort Deposit  
 MARTHA LOUISE LEE . . . . . Demopolis  
 RUTH LEHMAN . . . . . Birmingham  
 MAGGIE LINDSEY . . . . . Butler  
 RUBY LEE LIVINGS . . . . . Andalusia





# The JUNIORS

## Members

- MARY LORENZ . . . . . Opelika
- MARGARET McCRORIE . . . . . Birmingham
- MARY ELIZABETH McLAIN . . . . . Scottsboro
- KATHRYN MARTIN . . . . . Birmingham
- SARA ELLEN MARTIN . . . . . Clayton
- MARY FRANCES MERRILL . . . . . Anniston
- KATHERINE MILLER . . . . . Mobile
- NEWTON MILLIGAN . . . . . Georgiana
- ELISABETH MITCHELL . . . . . Atlanta, Ga.
- SARA MOORE . . . . . Camden
- SARA MORRISS . . . . . Alpine
- SARA MULLEN . . . . . Dothan



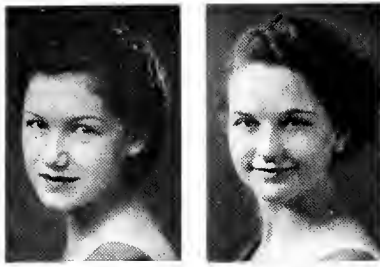


# The JUNIORS

## Members

- DOROTHY MYRICK . . . . . Deatsville  
 MARY ALICE NEWSOM . . . . . Montgomery  
 NELL ORR . . . . . LaFayette  
 HAZEL ORVIN . . . . . Chunchula  
 MARGUERITE PAGE . . . . . Opp  
 CULLIE PEAVY . . . . . Montgomery  
 GRACE PECK . . . . . Birmingham  
 WILLIE B. PETTIT . . . . . Canton, Ga.  
 BETTY PHILLIPS . . . . . Birmingham  
 LOUISE PITTMAN . . . . . Dadeville  
 FAN PLEDGER . . . . . Geneva  
 GRACE PORTER . . . . . Tuscumbia





# The

# JUNIORS

## Members

- AGNES POSTELL . . . . . Birmingham
- SUE POWERS . . . . . Greensboro
- ALVIRA REYNOLDS . . . . . Birmingham
- OLA MAE ROBERTSON . . . . . Brewton
- ETTIE BEELAND ROGERS . . . . . Greenville
- RUBY SALTER . . . . . Powhatan
- KATHERINE SAVAGE . . . . . Prattville
- CLARE SHACKELFORD . . . . . Autaugaville
- WINIFRED SHERER . . . . . Jasper
- KAY SHRIVALLE . . . . . Chipley, Fla.
- LILLIAN SHULENBERGER . . . . . Gulfport, Miss.
- JEANETTE SIMMONS . . . . . Evergreen

# The JUNIORS

## Members

- ANITA SMITH . . . . . Lineville  
 EDITH SMITH . . . . . Birmingham  
 ELAINE SMITH . . . . . Lineville  
 JANE SPRUIELL . . . . . Leeds  
 ALICE STALLWORTH . . . . . Monroeville  
 RUTH STOVALL . . . . . Brent  
 MRS. EDNA HERRIN STREATOR . . . . . Cullman  
 JUNE TAYLOR . . . . . Mobile  
 NELL TAYLOR . . . . . Montgomery  
 JULIA TERRELL . . . . . Birmingham  
 MARGARET THOMAS . . . . . Talladega  
 ELEANOR THRASHER . . . . . Centerville





# The JUNIORS

## Members

- MARGARET VAUGHN . . . . . Birmingham  
 LILLIAN VICKERY . . . . . Winfield  
 MARY VIRGINIA WHITE . . . . . Sylacauga  
 STELLA LEIGH WHITE . . . . . Mt. Andrew  
 DOROTHY WHITMIRE . . . . . Leeds  
 FRANCES WILSON . . . . . Thorsby  
 GRACE WILSON . . . . . Fairfield  
 ALICE WOOD . . . . . Montgomery  
 DEMORHEA WRIGHT . . . . . Dawson  
 BESS YARBROUGH . . . . . Evergreen



*The*

S O P H O M O R E S





# The

# S O P H O

## Members

- KATE ALISON . . . . . Carlowville
- ELEANOR ANDERSON . . . . . Prattville
- EDWINA ANDREWS . . . . . Thomasville
- NANELLE BAGLEY . . . . . LaGrange, Ga.
- ANNE BARR . . . . . Birmingham
- RUTH BENNETT . . . . . Butler
- FLORA LEE BORDEN . . . . . Greensboro
- JACK BOWDEN . . . . . Monroeville
- LUCILLE BROYLES . . . . . Madison
- MARGARET BURCH . . . . . Clio
- CHRISTINE BURDESHAW . . . . . Headland
- EDITH BURTON . . . . . Calera
- JANICE CARLEY . . . . . Mobile
- LYNETTE CARTER . . . . . Repton

# M O R E S

## Members

- ELOISE CLARK . . . . . McShan  
ELIZABETH CLAUGHTON . . . . . Gadsden  
PEARL CLEVELAND . . . . . Centerville  
IDA KATHERINE COKER . . . . . Talladega  
VIRGINIA COKER . . . . . Ashland  
ELEANOR RUTH COSPER . . . . . Trafford  
NELL CROSTHWAITE . . . . . Moulton  
MARION DAVIS . . . . . Birmingham  
ADA DELONEY . . . . . Leighton  
ANNA DELONEY . . . . . Leighton  
MARTHA DISMUKES . . . . . Geneva  
MARGARET D'ORSAY . . . . . Georgiana  
JUANITA DOUTHIT . . . . . Ardmore, Tenn.  
ELIZABETH DURANT . . . . . Mobile





# The

# S O P H O

## Members

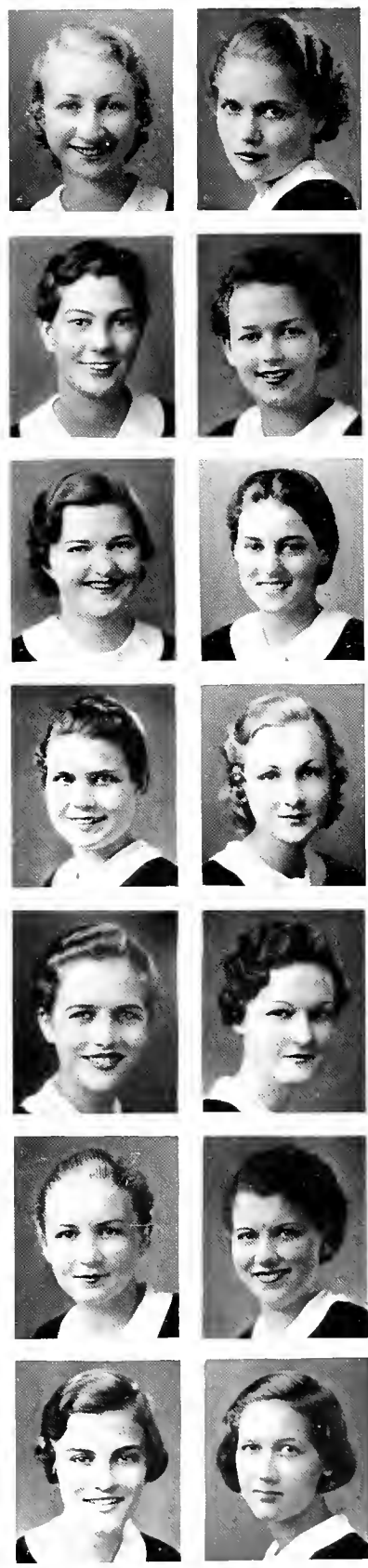
- STELLA ETHEREDGE . . . . . Town Creek
- MARY FLEMING . . . . . Geneva
- NELL FLOYD . . . . . Abanda
- JEAN FORREST . . . . . Birmingham
- MARY HELEN FRAZER . . . . . Opelika
- BERTIE GAMMELL . . . . . Clayton
- JENNIE HOBBS GARTH . . . . . Athens
- GWENDOLYN GENTRY . . . . . Coal Valley
- LOUISE GLASS . . . . . Georgiana
- SARA NELL GOFF . . . . . Enterprise
- ELSIE GOLSON . . . . . Autaugaville
- HILDA GOLSON . . . . . Prattville
- MARY NEWMAN GRAVES . . . . . Waverly
- RUTH KATE GUIN . . . . . Moore's Bridge



# M O R E S

## Members

- FRANCES HAIN . . . . . Selma
- BUNCH HALSTEAD . . . . . Headland
- MARTHA HANSON . . . . . Reform
- OUIDA HARRIS . . . . . Thomasville
- MARY ELLEN HARRISON . . . . . Blountstown, Fla.
- ISABEL HENDERSON . . . . . Mobile
- ROSALIE HENDERSON . . . . . Greenville
- LOUISE HERBERT . . . . . McKenzie
- BILLIE HILL . . . . . Siluria
- NELL HINES . . . . . Childersburg
- KATHERINE HORTON . . . . . Aliceville
- MYRTLE HORTON . . . . . Decatur
- EVELYN HOUCK . . . . . Russellville
- JUANITA HOWELL . . . . . Mobile





# The

# S O P H O

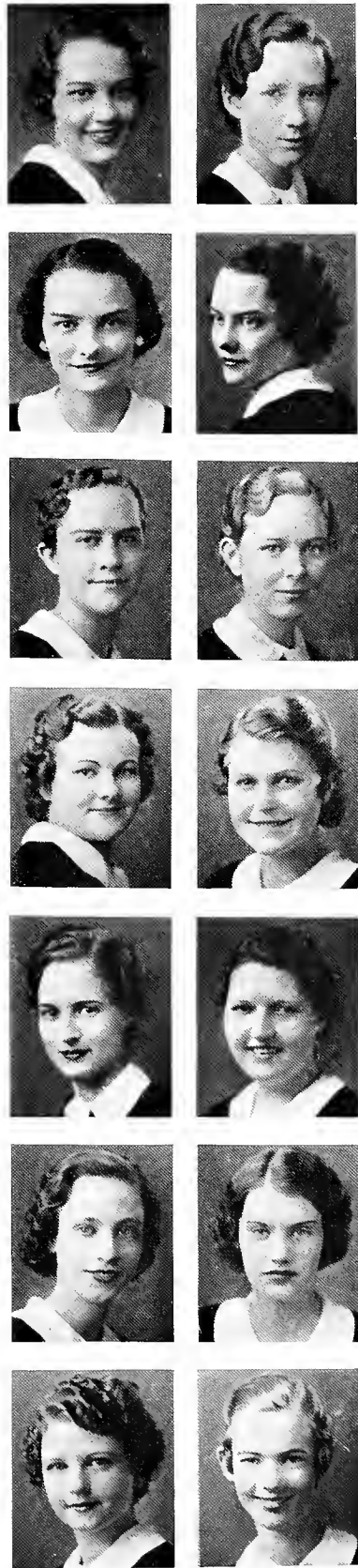
## Members

- KATRINA HOWELL . . . . . Haleyville
- MARGARET HUFF . . . . . Yolande
- ANNIE CATHERINE HUGHES . . . . . Guin
- IDA JACOBS . . . . . Bessemer
- MILDRED JEFFERIES . . . . . Jemison
- MILDRED JENKINS . . . . . Lineville
- ANNIE BAILEY JONES . . . . . Valley Head
- ELOYSE JONES . . . . . Clanton
- LOUISE JONES . . . . . Bessemer
- MARY NELL JONES . . . . . Clanton
- ANNA PAUL KING . . . . . Birmingham
- MARY LOUISE KREIDER . . . . . Selma
- RUTH KRUDOP . . . . . Fulton
- ISBELL LANE . . . . . Talladega

# M O R E S

## Members

- SARAH LATIMER . . . . . Geneva  
 ANNE LEA . . . . . Birmingham  
 ADELAIDE LEDBETTER . . . . . Anniston  
 MARY LEDBETTER . . . . . Anniston  
 ELEANOR LEWIS . . . . . Sweet Water  
 JEAN LOGAN . . . . . Montevallo  
 NELL LONG . . . . . Lynn  
 VIOLA LOVE . . . . . Dixiana  
 KATHLEEN McANNALLY . . . . . Trafford  
 JULIA CATHERINE McDONALD . . . . . Rockford  
 LUCILLE MAHAN . . . . . Russellville  
 SALLYE MAHAN . . . . . Clanton  
 PEGGY MERRELL . . . . . Eva  
 ELIZABETH MERRILL . . . . . Andalusia





# The

# S O P H O

## Members

- ELIZABETH MESSER . . . . . LaFayette
- JULIET MILLER . . . . . Murry Cross
- LOUISE MORTON . . . . . Midway
- RUTH MOSS . . . . . Selma
- EVELYN NEAL . . . . . Cullman
- GRACE LEE NEWKIRK . . . . . Hamilton, Ohio
- LAURA NORTHCUTT . . . . . Evergreen
- RUBY PATTON . . . . . Adger
- MARJORIE PAYNE . . . . . Anniston
- ELIZABETH POWELL . . . . . Carson
- VERA POWELL . . . . . Brilliant
- ELIZABETH PRITCHETT . . . . . Thomaston
- LUCILLE RUFORD . . . . . Birmingham
- VIDA REEVES . . . . . Birmingham
- FRANCES RIBBLE . . . . . Bessemer

# M O R E S

## Members

- JEAN RICHARSON . . . . . Notasulga  
 FRANCES RILEY . . . . . Tuskegee  
 ALICE ROBERTS . . . . . Columbiana  
 MARY ELLA ROBERTS . . . . . Birmingham  
 EMMA ROPER . . . . . Trussville  
 LOUISE SANDERS . . . . . Goshen  
 NELL SANDERS . . . . . Wilton  
 HELEN SIZEMORE . . . . . Guin  
 LILA SPEARMAN . . . . . Ashland  
 GENEVIEVE STALLWORTH . . . . . Mobile  
 ELIZABETH STANLEY . . . . . Clanton  
 ELEANOR STRICKLAND . . . . . Selma  
 EDNA HARRIETTE STRIPLING . . . . . Cullman  
 JESSIE VERNA SUMNERS . . . . . Goodwater  
 RUTH SWEARINGEN . . . . . Uchee

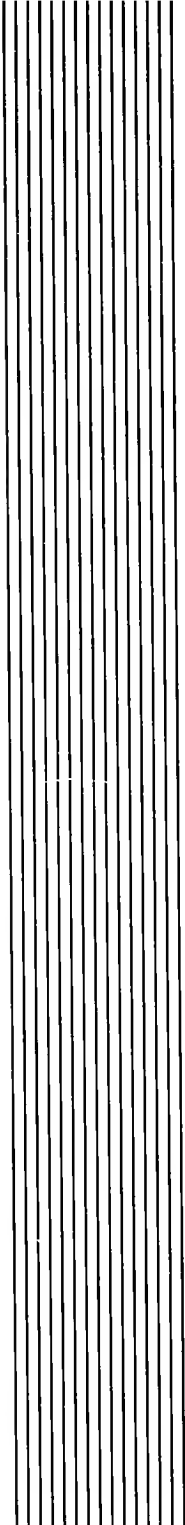




# The SOPHOMORES

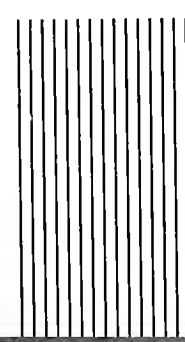
## Members

- PATRICIA SWIFT . . . . . Gadsden  
 AVA GLENN TATE . . . . . Cuba  
 VOINCILE THOMAS . . . . . Birmingham  
 AILEEN TINDEL . . . . . Graceville, Fla.  
 MARY KATE TROUP . . . . . Decatur  
 JANE WADSWORTH . . . . . Montgomery  
 MARGARET WAKEFIELD . . . . . Anniston  
 MARY FRANCES WARD . . . . . Greensboro  
 HELEN WISE . . . . . Montgomery  
 MARY LEE WOOD . . . . . Andalusia  
 MARY ELIZABETH YOST . . . . . Guntersville  
 GLEN YOUMAN . . . . . New Orleans, La.  
 PAT YOUNGBLOOD . . . . . Carlowville  
 ELIZABETH ZACHERY . . . . . Notasulga

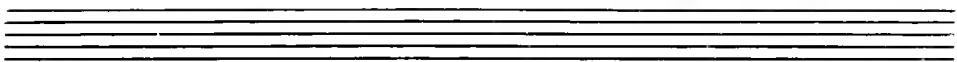


*The*

F R E S H M E N



DOROTHY ALLEY . . . . . Birmingham  
 LAVADA AMBROSE . . . . . Wilton  
 MARIE ANDREW . . . . . Geneva  
 ROSMOND ANDREWS . . . . . Thomasville  
 HELEN AUSTIN . . . . . Mobile  
 LENA BALDWIN . . . . . Andalusia  
 MARCELLE BARNES . . . . . Dothan  
 GLADYS BEATY . . . . . Louisville  
 ANNIE LAURIE BECKHAM . . . . . Selma  
 DELIA THORNTON BEECH . . . . . Montgomery  
 JOHNNIE BELL . . . . . Henagar  
 LUCILE BELL . . . . . Overton  
 VIVIAN BOOKER . . . . . Carbon Hill  
 HALLIE BOSWELL . . . . . Talladega  
 ALICE BRADFORD . . . . . Guntersville  
 MARAGARET BRAZEAL . . . . . Woodward  
 KATHERINE BROCK . . . . . New Brockton  
 RUTH BROOKS . . . . . Irondale  
 IRENE BROWN . . . . . Jasper  
 PALLIE BROWN . . . . . Geneva  
 JEANETTE BRUCE . . . . . Lanett  
 ELIZABETH BUCK . . . . . Thomaston

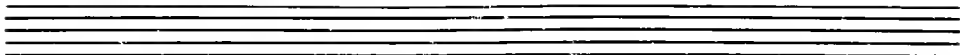


F R E S H M E N





•  
 ELSIE BURDESHAW . . . . . Headland  
 LOUISE BURNS . . . . . Tuscumbia  
 RUTH BUSHELL . . . . . Palisade's Park, N. J.  
 AIDALU BUTENSCHON . . . . . Oxford  
 VIRGINIA CALTON . . . . . Eufaula  
 EVELYN CARLTON . . . . . Thomaston  
 CAROL CARNATHAN . . . . . Montgomery  
 ALICE CHANDLER . . . . . Fayette  
 MARY LULA CHRISTOPHER . . . . . Butler  
 VIRGINIA CLARK . . . . . Dadeville  
 MARY ELIZABETH COGGIN . . . . . Waverly  
 JUANITA COHEN . . . . . Montgomery  
 LAURA COLEMAN . . . . . Sawyerville  
 ANNIE MERLE COLLINS . . . . . Birmingham  
 EVELYN CONKLE . . . . . Oxford  
 MARGUERITE COOK . . . . . Camden  
 ALICE CROOM . . . . . Evergreen  
 MARY EMMETTE CRUM . . . . . Haynesville  
 RUTH CRUTCHER . . . . . Athens  
 CLARA ETHEL DALE . . . . . Oak Hill  
 YVLETTE DAVIS . . . . . Kennedy  
 MARTHA DEAN . . . . . Bangor  
 •



F R E S H M E N

SUE DeLONEY . . . . . Dothan  
 MARY EMMA DICKEY . . . . . Bessemer  
 MARY JACK DOBSON . . . . . Wetumpka  
 WYLYNA DOZIER . . . . . Nanafalia  
 LUCILE DRIVER . . . . . Geneva  
 IRENE DUBBERLY . . . . . Tallassee  
 GRACE EDWARDS . . . . . Childersburg  
 SARA ELLIOT . . . . . Vincent  
 VIRGINIA ELLIOT . . . . . Vincent  
 BURLIE ELLIS . . . . . Jasper  
 MARGARET ELLIS . . . . . Columbiana  
 MARGUERITE ELLISOR . . . . . Andalusia  
 MARY PAT FARISH . . . . . Thomaston  
 CHRISTINE FAULKENBERRY . . . . . McCullough  
 MARY LOU FELDER . . . . . Montgomery  
 VIRGINIA FISCH . . . . . Birmingham  
 ELLEN FISH . . . . . Wilet, N. J.  
 KATHLEEN FOLSOM . . . . . Florala  
 MIRIAM FREELAND . . . . . Mobile  
 MARY FRYE . . . . . Birmingham  
 KATHERINE GAINES . . . . . Verbena  
 ELOISE GALLOWAY . . . . . Montevallo




---



---



---

F R E S H M E N



FRANCES GARRETT . . . . . Bay Minette

JOYCE GARRETT . . . . . Dadeville

NELL GAY . . . . . Geneva

SARAH GOODE . . . . . Gastonburg

RUBY VIRGINIA GRAY . . . . . Greensboro

EDITH GREEN . . . . . Opelika

CHRISTINE GREER . . . . . Altoona

ELIZABETH GRISWOLD . . . . . Inverness

MARY EVELYN GWALTNEY . . . . . Dothan

JULIA GWIN . . . . . Anniston

LORRAINE HALL . . . . . Bay Minette

MARY FRANCES HARDEGREE . . . . . Ashland

FRANCES HARDZOG . . . . . Ozark

ELLA MAE HARGRAVE . . . . . Birmingham

EDITH HARPER . . . . . Birmingham

MABLE ELIZABETH HARRIS . . . . . Clanton

VIRGINIA HARRIS . . . . . Birmingham

HILDA HART . . . . . Clanton

JANICE HAWKINS . . . . . Dothan

MARY OLIVE HEARN . . . . . Talladega

ELIZABETH HEATH . . . . . Childersburg

AILEEN HOLLEY . . . . . Northport

---

---

---

F R E S H M E N

NELL HOLMES . . . . . Abbeville  
 TOMMIE LEE HOLMES . . . . . Goodwater  
 HAZEL HOLT . . . . . Opelika  
 NANCY HOPKINS . . . . . Gadsden  
 MARY BELLE IRBY . . . . . Lower Peach Tree  
 JEWELL JACKSON . . . . . Kinston  
 RUBY JACKSON . . . . . LaFayette  
 EMMA JOHNSON . . . . . Birmingham  
 THELMA JOHNSON . . . . . Carbon Hill  
 CHRISTINE JONES . . . . . Valley Head  
 ELINOR JONES . . . . . Autaugaville  
 FRANCES L. JONES . . . . . Camden  
 MILDRED JONES . . . . . Childersburg  
 MARGARET JOYCE . . . . . Birmingham  
 EDYTH KERR . . . . . Wedowee  
 WINIFRED KILGORE . . . . . Jasper  
 VIRGINIA KNIGHT . . . . . Healing Springs  
 SARAH KYSER . . . . . Selma  
 LURLINE LATHAM . . . . . Lawley  
 MARY INEZ LAYFIELD . . . . . Warrior  
 LILLIAN LEE . . . . . Evergreen  
 BEVERLY LEWIS . . . . . Birmingham




---



---



---

F R E S H M E N



BROWNIE LOLLAR . . . . . Fayette

RUTH LUCK . . . . . Columbiana

POLLY McCARTY . . . . . Hartford

FLORENCE McCORKLE . . . . . Bessemer

JEAN McCURRY . . . . . Flat Creek

EVELYN McINISH . . . . . Dothan

LILLIE M. McLANEY . . . . . Birmingham

CHRISTINE McLAUGHLIN . . . . . Leeds

EMILY McLENDON . . . . . Birmingham

AEOLIAN McREE . . . . . Greenville

HELEN MANN . . . . . Alexander City

ADELE MARTIN . . . . . Greensboro

EVELYN MARTIN . . . . . Enterprise

PAULINE MASSEY . . . . . Vina

AYLMER MASSINGILL . . . . . Pontiac, Mich.

ELIZABETH MAY . . . . . Greensboro

MARTHA MICHAELS . . . . . Birmingham

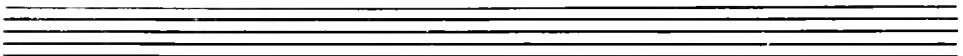
MILDRED MILLER . . . . . Andalusia

BLANCHE ELEANOR MOODY . . . . . Sylacauga

LOUISE MOORE . . . . . Bessemer

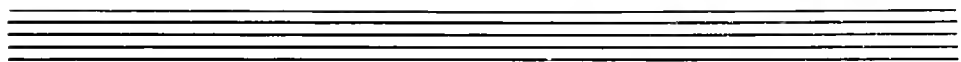
MILDRED MOORE . . . . . Bessemer

EDITH MORGAN . . . . . Birmingham



F R E S H M E N

RACHEL MORRIS . . . . . Geneva  
 ELIZABETH MORRISON . . . . . Selma  
 NELLIE JO MORTON . . . . . Guntersville  
 MAE MOSELEY . . . . . Sylacauga  
 OLIVE MOSES . . . . . Birmingham  
 VIRGINIA NASH . . . . . Bessemer  
 MARJORIE NEAL . . . . . Bessemer  
 BARBARA NETTLES . . . . . Tunnel Springs  
 BERNICE PARRIS . . . . . Geraldine  
 MILDRED PARSONS . . . . . McCalla  
 GAY PEARSON . . . . . Seale  
 MABLE PETERS . . . . . Deatsville  
 MARY HILDA PETERS . . . . . Montevallo  
 SARA ANN PHILIPS . . . . . Gadsden  
 PHYLLIS PLANK . . . . . Gadsden  
 LOUISE POLLARD . . . . . Newbern  
 KATHERINE PORTER . . . . . Geraldine  
 JOSEPHINE POW . . . . . Woodward  
 VIVIAN POWELL . . . . . Carson  
 FRANCES RAMSEY . . . . . Dothan  
 ELIZABETH RAY . . . . . Atmore  
 VIRGINIA RHODES . . . . . Bay Minette



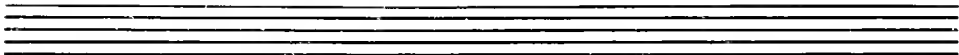
F R E S H M E N



●

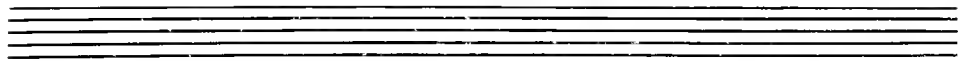
IRMA RICHARDSON . . . . . Childersburg  
 ANN RODDY . . . . . Birmingham  
 BEAIRICE ROWELL . . . . . Guntersville  
 MAHAN RUTLAND . . . . . Tuscumbia  
 NELLE SAMFORD . . . . . Opelika  
 CARY SANFORD . . . . . Fairfield  
 MARY ELIZABETH SANKEY . . . . . Nauvoo  
 MARY SCARBROUGH . . . . . Eastboga  
 MARY SCOTT . . . . . Uriah  
 DOROTHY DEAN SESSIONS . . . . . Clanton  
 EDNA SIKES . . . . . Addison  
 ELIZABETH SITZ . . . . . Gadsden  
 SUSAN SITZ . . . . . Gadsden  
 MADGE SLEDGE . . . . . Greensboro  
 SARA FRANCES SMITH . . . . . Lineville  
 THERESA SMITH . . . . . Florala  
 JEANETTE STEELE . . . . . Brent  
 KITTY STEELE . . . . . Jacksonville  
 ELIZABETH STEPHENS . . . . . Clio  
 LEVERNE STEPHENS . . . . . Bessemer  
 MARJORIE STEPHENSON . . . . . Jasper  
 JANE STURGES . . . . . Dothan

●



# F R E S H M E N

MARGARET TAMSETT . . . . . Leroy  
 CECILE THOMPSON . . . . . Bay Minette  
 CHARLIE VERNE TINNEY . . . . . Columbiana  
 DAISEY KATHERINE TURNER . . . . . St. Stephens  
 ELIZABETH TUTWILER . . . . . Greensboro  
 LOUISE VANCE . . . . . Birmingham  
 MARJORIE WALTON . . . . . Mobile  
 EVELYN WARE . . . . . Birmingham  
 MARGARET FRANCES WARREN . . . . . Jackson  
 ELEANOR WATSON . . . . . Georgiana  
 LUCY WEBSTER . . . . . Florida  
 ANNE WILCOX . . . . . Birmingham  
 MARY WILLIAMS . . . . . Lanett  
 SARA AUBREY WILLIAMS . . . . . Birmingham  
 SARA EVANS WILLIAMS . . . . . Kinston  
 CRICK WILD . . . . . Evergreen  
 RUTH RAY WILSON . . . . . St. Stephens  
 HILDA WINDHAM . . . . . Black  
 MYRTICE WOODS . . . . . Headland  
 HELEN WOODWARD . . . . . Birmingham  
 ELIZABETH YARBROUGH . . . . . Prattville  
 JEAN YARBROUGH . . . . . Enterprise  
 MILDRED YARBROUGH . . . . . Evergreen  
 VIRGINIA YEILDING . . . . . Birmingham



F R E S H M E N



# Activities

Nellie  
Tayloe  
Ross

NELLIE TAYLOE ROSS, first woman Director of the Federal Mint, is notable because of the splendid contributions she has made to a sounder, more effective American government. Her first appearance in political life was in 1925, when she became Governor of Wyoming upon the death of her husband. Since that time she has been active as a writer and lecturer.

To the students of Alabama College, Nellie Tayloe Ross sends this message:

"There are, undoubtedly, some among you who are destined to distinguished places in the government. There must be unbounded inspiration in the knowledge that now there is no height to which you may not reasonably aspire. But whatever your station may be, high or low, in the morning of your life there is one resolve that I hope you will make and keep: that you will bring to your political responsibilities as a citizen the best that is in you of intellectual and spiritual power, and zealously strive to place politics and government on a higher plane than they have ever been."

Nellie Tayloe Ross

The First Lady



GOVERNOR AND MINT DIRECTOR





# THE BOARD OF PUBLICATIONS

## OFFICERS

EVELYN POW . . . . . *Chairman*  
 IDA KIRKWOOD . . . . . *Secretary*

Since its organization in March, 1931, perhaps the most important duty of these "Hitlers of the Press" has been the passing upon all nominations to editorships and manager-ships of the three campus publications.

This year the Publications Board, under the able chair-manship of Evelyn Pow, is composed of six students; includ-ing three Seniors, Ida Kirkwood, Margaret Coley, and Evelyn Pow; two Juniors, Rubye Lee Livings, Fan Pledger; one sophomore, Frances Ribble; and two faculty members, Dr. A. W. Vaughan, Literary Adviser, and Mr. E. H. Wills, Financial Adviser.

The various staffs are responsible to the Board and the Board draws up all general regulations covering editorial and financial matters. A greater efficiency has developed from this plan.



# A T H I N G H A P P E N

## EDITORIAL STAFF

*Editor* . . . . . MARJORIE GOFF  
*Associate Editors* . . . . . RUTH LeBARON, MARGUERITE COUCH  
*Assistant Editors* — ANN LOVILL, AGNES POSTELL, JESSIE FORREST, CHEROKEE SHIRLEY, BEBE FANT, NELL HINES, KATHERINE ZADEK, EFFIE COWAN.

## BUSINESS STAFF

*Business Manager* . . . . . FRANCES KOCH  
*Advertising Manager* . . . . . ETTIE BEELAND ROGERS

The editor and business manager wish to express here their appreciation of the very fine work done by Agnes Postell and Ettie Beeland Rogers, who were away at the time the staff picture was made. Agnes was indispensable to the editorial staff, and Ettie Beeland seemed to never weary of asking prospective advertisers to "sign on the dotted line."

**T**HE *Technala*, the yearbook of Alabama College, is the culmination of the year's activities. On that gala May Day when copies are issued to the students, there is a general jubilation of spirits, rejuvenation of memorable events, and recapitulation to the varied charms of the past year's program.

The purpose of the *Technala* is to describe student life. This it does with a vengeance, as many unfortunates, whose pictures were snapped while eyes squinted and mouths gaped, will testify.

Every phase of college life is covered, from the administration to the social life. In after years, while diligently bouncing grandchildren on traditionally rheumatic knees, Alabama College students may reverently pry open their moth-eaten *Technalas* and proudly point out their girlish selves importantly posed on the Student Government page or draped over the sundial. They can tread again in imagination the weary miles to classes, suffer once more in spirit the excruciating hours spent on icy February days down on the hockey field. They can live over the thrills of College Night, Elite Night, and the thousand and one other nights over which they struggled, rejoiced, and lost sleep. They can see the beautiful brick roads and be thankful once more that they were in college at the auspicious time when the roads were laid and several hundred pairs of shoes and many more tempers were saved wear and tear.

Within the covers of every *Technala* are the "breath, smiles, tears" of all of college life. Take it and breathe, laugh, and weep with it, but be sure not to let your tears run the printer's ink!

# N G Y E A R L Y

# T H E T E C H N A L A

MARJORIE GOFF  
Editor



FRANCES KOCH  
Business Manager



"NOSING 'round for news" is one of the favorite pastimes of these editors in embryo. The staff is not unaware of the power of the press and moulds student opinion on important issues throughout the school year.

Each student receives the *Alabamian* bi-monthly—the cost being covered by the student activity fee. As a way of letting them know what the upper crust is doing the paper is sent to every high school in the state and to the home of each student. The *Alabamian*, literally, perhaps, "keeps the home fires burning."

With every issue an "extra," the paper is eagerly read from the stimulating news of the day to the juicy morsels of campus gossip.

The editor, Eunice Thomas, is perhaps the *Alabamian's* severest critic. With pencil poised above the copy she unflinchingly draws a line through any matter she considers irrelevant or not "up to par." Under her guidance the paper has thumbed its nose at the ordinary collegiate attempt and developed into a metropolitan newspaper in miniature. Bare heads to you, Editress Thomas!

The business manager, Carolyn Reddoch, has kept the budget as balanced as her poise. Her careful expenditure of the press funds has enabled the staff to make the various improvements in the paper. Everything must be accounted for to this charming businessite and if the mailing charges or the make-up expenses exceed expectations, there's some explaining to do to Carolyn.

Marion Bozenhard, Effie Cowan, and Jessie Forrest deserve special recognition for their commendable work on the *Alabamian* staff. Marion Bozenhard as advertising manager, Effie Cowan as circulation manager, and Jessie Forrest as art editor have worked untiringly for the success of the paper. The editorial staff has justifiable suspicions that students turn to the third page to enjoy Jessie Forrest's cartoons even before reading their editorials.

# C O N C E R N I N G

## ADMINISTERING

EUNICE THOMAS  
Editor



CAROLYN REDDOCH  
Business Manager







# T H E A L A B A M I A N

## ASSISTING

*Associate Editor* . . . . . ELIZABETH SOUDERS  
*Associate Editor* . . . . . BEBE FANT  
*Advertising Manager* . . . MARION BOZENHARD  
*Assistant Editor* . . . . . AGNES PLANT  
*Assistant Editor* . . . . . DEMORIEA WRIGHT  
*Assistant Editor* . . . . . KATHERINE ZADEK  
*Assistant Editor* . . . . . MARGARET COLEY  
*Art Editor* . . . . . JESSIE FORREST  
*Circulation Manager* . . . . . EFFIE COWAN

The *Alabamian* is edited alternately by BeBe Fant and Ebby Souders. They have put into the *Alabamian* a year of careful, comprehensive and concisely planned and executed work. The success of their efforts is obvious from the eagerness with which every student welcomes the distributors of the paper.

## REPORTERS

MARGARET VAUGHN, LENA CLAIRE SHACKELFORD,  
 BLENNIE YOUNGBLOOD, MARY FRANCES MERRILL,  
 VIRGINIA HINES, MARGARET HARTUNG, MARY JIM  
 ROBINSON, JUNE HAMILTON, RUTH CRUDOP, EDNA  
 STRIPLING, MARY HOLBROOK, VIORENE CRUMLEY,  
 SALLYE MAHAN, ELIZABETH ROBERTSON, RUTH  
 BENNETT, GRACE LEE NEWKIRK, GRACE LANE,  
 FANNIE RUTH PLEDGER, JO WOODWARD, DAISY  
 TURNER, MARY ELLA ROBERTS, IDA KATHRYN  
 COKER, LOUISE HERBERT, ELLEN FISH, DOROTHY  
 ALLEY, RUBY NELL DAVIS, ETTIE BEELAND  
 ROGERS, VIDA REEVES, NELL HINES.



FANT

SOUDERS

# CREATIVE WRITING

## **Finds Expression in the Tower**

### THE STAFF

*Editor* . . . . . CLARE SHACKELFORD

*Business Manager* . . . . . MARY ALICE NEWSOM

*Assistant Editors* . GRACE LANE, RUBY LIVINGS, VIDA REEVES

Freshman and Sophomore auxiliary staffs  
to be elected.

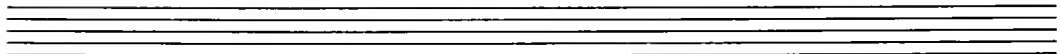


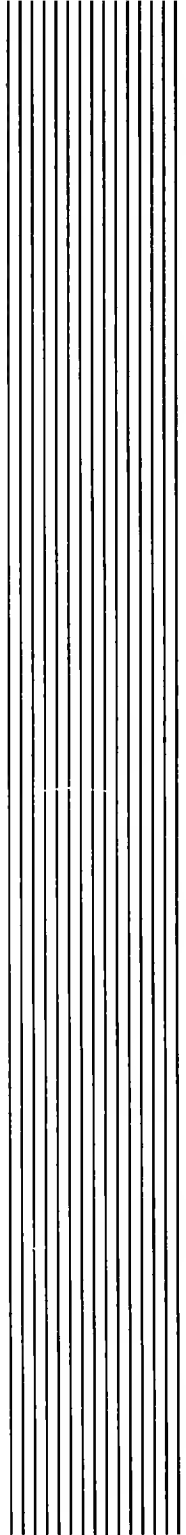
**T**HE old tower, around which our college life centers, is now the influencing factor in this, our youngest publication, which bears its name. Its simplicity of line, firm stability, and its air of romance have permeated the leaves of this magazine of creative writing.

*The Tower* is published quarterly, and it is included in the subscription price of *The Alabamian*. Material may be submitted by any students.

Clare, as capable editor-in-chief, has continued to uphold the high literary standards which *The Tower* has set for itself. She is assisted by a small but exceedingly efficient staff which edits all the material submitted to them,—allowing only the best to be published. *The Tower* is regarded on the campus as the acme of literary perfection.

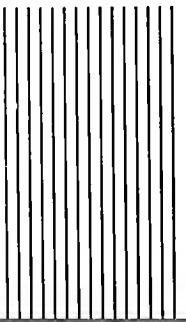
This year, for the first time since the magazine was published in 1931, it has had a business manager all its own. Mary Alice Newsom has been very efficient in this position.





*With the*

A T H L E T E S



# ATHLETIC



**MILDRED  
LLOYD**

ONE of the most distinctly outstanding organizations on the Alabama College campus is the Athletic Association, which has as its principal purposes the promotion of health and recreation, stimulating interest in play, and the fostering of the highest type of college spirit.

"Lloyd," as president, has shown herself to be fully capable of handling the affairs that were entrusted to her by the students.

The governing power of the Association is vested in the Athletic Board, a group made up of the officers of the organization, class representatives, and councilors of the various sports. The Board decides all important issues of the athletic season; such as schedules for sports, rules governing all events, and new plans to be carried out.

This year the Athletic Association, with the aid of the Sophomore Class, presented a Vodvil. The addition of six new tennis courts was another project of the 1933-34 Board.

The publishing of a handbook is an interesting innovation of the Athletic Association and, if received with a genuine degree of enthusiasm, will become a yearly publication of the Board.

# ASSOCIATION

## THE BOARD

### OFFICERS

President . . . . . MILDRED LLOYD  
Vice-President . . . . . MARION BOZENHARD  
Secretary . . . . . BILLIE SIMS  
Treasurer . . . . . JUNE HAMILTON  
Reporter . . . . . LENA OATES

### CLASS REPRESENTATIVES

Senior . . . . . ELIZABETH HICKS  
Junior . . . . . SARA MULLEN  
Sophomore . . . . . ELEANOR LEWIS  
Freshman . . . . . MILDRED WILD  
and Sport Councilors



MISS ELSA SCHNEIDER  
Faculty Adviser

First Row—OFFICERS  
Second Row—CLASS REPRESENTATIVES





VIVIAN CHANDLER  
Basketball Councilor

CRISP, fall weather—sunsets at 5 p.m.—choking dust on the basketball field stirred up by pivoting, pounding feet—that's basketball season!

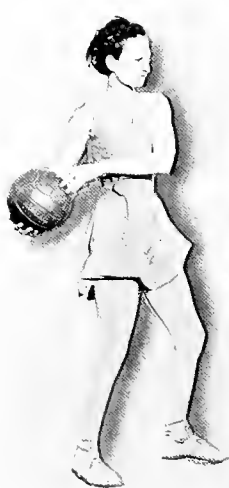
Enough students came out to provide each class with three teams. Due to the unusual generosity of the weather no seasonal rains spoiled the straight-record basketball season.

The Seniors asserted their rights in their usual dignified and exalted manner and sedately took the wreaths of victory as their own. They had some tense combats and the games were exciting enough to have had better support than was manifest. Varsity selections were approved unanimously because of the excellent brand of basketball which the girls who were selected displayed.

Because of her unexcelled councilorship, the preliminary practices and subsequent tournaments proved "T. P.'s" unusual reliability.

The Junior and Senior Physical Education majors handled the refereeing situations with easy nonchalance, coupled with sound judgment, and kept the spirit and fight of the tournaments on an even keel of clean sportsmanship.

# O N T H E



HICKS



HORTON



SPARKS



LEHMAN

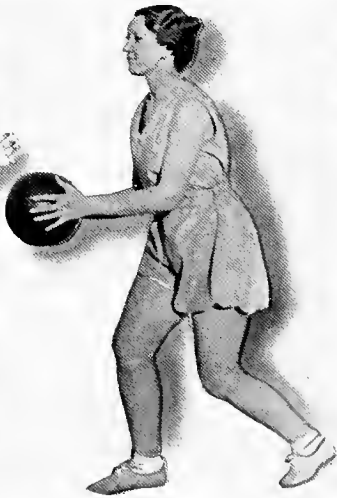


Above: THE SENIOR, JUNIOR, SOPHOMORE, AND FRESHMAN CLASS TEAMS  
Below: BASKETBALL VARSITY

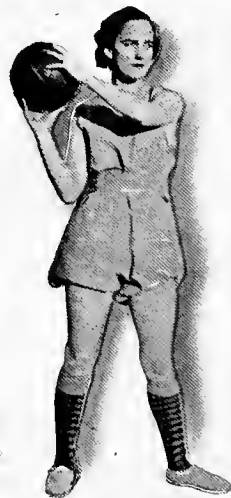
# C O U R T



HILL



WINDHAM



HARRIS



PARSONS

# A L L I S N O T G O A L



RUTH LEHMAN  
Hockey Councilor

NOTHING can be quite so stirring as the unflinching sweep of the forward line of a hockey team steadily dribbling, driving, and pushing a wayward white ball down the field, past opponents and on to a probable goal. Hockey season has met with high enthusiasm on the part of the more daring-minded women on the campus. Two days a week practice for upperclassmen, with Freshmen "taking it all in" has shown a decided improvement over the method of "learn-if-you-can" of past seasons. The break-up of practices as a result of the Christmas holidays only aided in increasing the zeal of the students, and the season continued on a higher altitude of interest than before. "Brownie's" convenient and ingenious method of "signing up" is about the fairest, squarest deal these Amazons have had in a good long time. Teams were well matched, the scraps were nothing less than impressive, and varsity again met with instant approval.



WILDER



CHANDLER AND LOVILL





### 1934 VARSITY

ANN LOVILL, *right wing*; BILLIE SIMS, *right inner*; MILDRED SPARKS, *center forward*; RUTH LEHMAN, *left inner*; JULIA HARRIS, *left wing*; BILL HICKS, *right halfback*; MILDRED LLOYD, *center halfback*; VIVIAN CHANDLER, *left halfback*; ELISABETH MITCHELL, *right fullback*; TOM PARRISH, *left fullback*; MABEL WILDER, *goal keeper*.

*Above is shown the Underclass Hockey enthusiasts and below them the Upper-class players.*

Below:  
SOME OUTSTANDING  
HOCKEY PLAYERS



LLOYD AND SIMS



SHERER

# OVER THE NET

VIRGINIA ALVERSON  
Volley Ball Councilor



The athletic season opened definitely with a resounding whack in the midriffs of a yielding volley ball. After a vigorous few weeks of practice, tournaments began. Surprising wins, upsetting losses, and an unusual amount of class support added caliber to the meet.

"Vee's" efficient management offers the incoming councilor a stiff goal toward which to aim. On this page are shown some of the major teams. Top: Senior and Junior class teams. Center: Varsity. At left: Sophomore and Freshman class teams.

# AROUND THE BASES

**B**ASEBALL was the culmination of the athletic season. The usual procedure of practices and interclass tournaments was carried out. Varsity was selected and was made up of the scrappiest infielders, most powerful batters, and hardest-hitting outfielders the classes could produce.



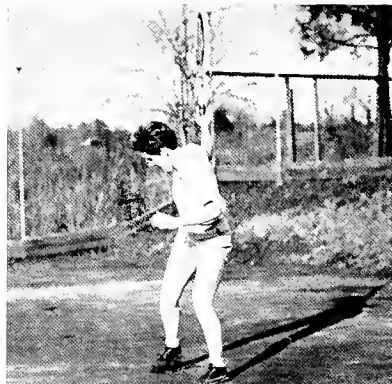
**NELLIE JAMES**  
Baseball Councilor



**T**HESE young barons challenged the faculty, and one of the season's most stirring games took place as a part of the Sports Day program. The opportunity of seeing our "brain trust" hitting on all nine was an event not to be missed.

Under the councilorship of Nellie James and as a result of an unusual amount of student interest, the baseball season easily took the spotlight of sportdom this spring.





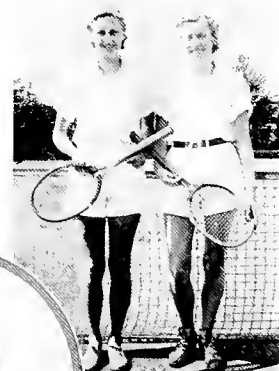
# THE TENNIS RACKET

JESSIE FORREST  
Tennis Councilor

THE 1933 spring tennis tournament skimmed along breezily until Sports Day. The finals in both doubles and singles were extremely keen in competitive sportsmanship and strategic playing and put tennis definitely in the front ranks of the major sports. "Sparky" gave the tournaments a good hard shove, sending the matches forward on their own momentum.

For the fall tennis tournament Jessie used a ladder tilt, a new wrinkle, which caused more students to use the courts who would ordinarily not have bothered to flick a racquet so early in the season.

The addition of six new courts, bringing the total up to ten, speeded up the practices for the Sports Day 1934 spring finals and kept the tennis councilor quite busy.



## CHAMPIONS

WILSON SISTERS  
Doubles  
SPARKS, Singles

# THE WATER'S FINE



ELISABETH MITCHELL  
Swimming Councilor

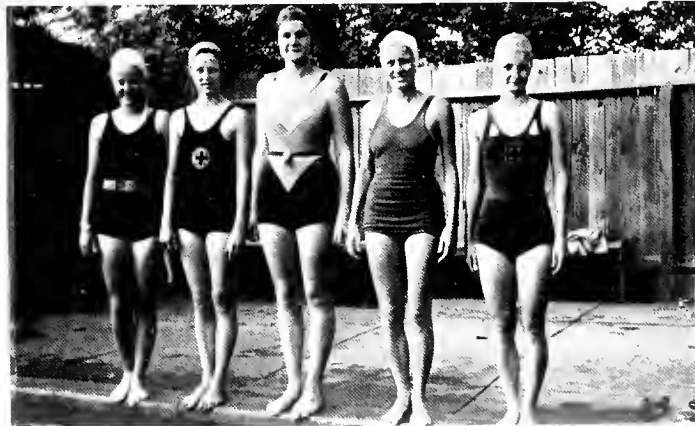
## CHAMPIONS

WILSON, Diving  
MITCHELL, Swimming



SWIMMING, diving, and life saving classes are a regular event in the A. C. pool. The final swimming meet took place on Sports Day and was one of the highlights of the athletic year. "Mitch," as swimming councilor for 1933, provided us with a more picturesque and uniquely handled meet than the College has witnessed in several years.

The easy beauty of Chicken Wilson's diving won for her the title of Alabama College's champion diver, while "Mitch's" steady, dependable strokes let her splash off with four out of eight first places. Other "first placers" were: Jessie Forrest, breast stroke for form; Billie Sims, side stroke for form; and Dorothy Wilson, free style.





# ON WITH THE DANCE

**F**OR those collegians who resist the lure of the field and courts, the Physical Education Department offers dancing classes in which those aesthetic students may appear in sheer, vari-colored costumes for flitting or in the more plebeian regulation gym suit for clog and tap. The training and practice in these classes is the nucleus around which the students create dances for the year's entertainments.

*The dance, both as a means of expression and physical development, is emphasized at Alabama College. Our photographer snapped Eunice Thomas in one of the dancing classes.*





BARBARA LE BARON  
CHRISTINE BEASLEY  
CO-COUNCILLORS

# WITH BOW AND ARROW

A TAUT drawn bow, the zing of a whizzing arrow, and the sharp thud as it hits a brilliantly colored target are the high lights of that gentlewoman's sport—archery.

For the last four years Alabama College archers have taken part in the Women's Intercollegiate Telegraphic Archery Tournament, which is sponsored by the National Archery Association. Those girls who win highest score in a Columbia Round on Sports Day are eligible for the Telegraphic Tournament. Alabama College has held a not unenviable place in these jousts, winning twelfth national place in 1933.

In the spring of 1933 Barbara LeBaron and Christine Beasley were high scorers, and in the fall of 1933 Evelyn Pow and Emma Alison succeeded to that honor.



High Scorers  
EVELYN POW  
CHRISTINE BEASLEY







CLASS ATHLETICS



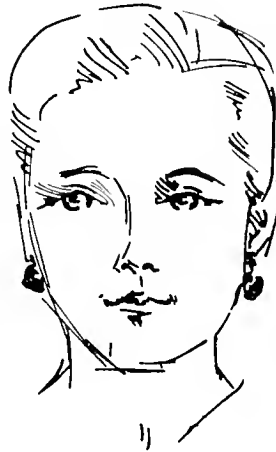
Winners of Guards  
and Pins

ATHLETIC awards are given each spring by the Athletic Association to those girls who have excelled in all sports of the past season.

The class athletes are selected by a committee composed of officers of the Association, class representatives to the Athletic Board and the faculty members of the Physical Education Department. The standards upon which these awards are based are technical skill in sports and sportsmanship. The class athletes for the year 1933 were: Mamie Chandler, Senior; Billie Sims, Junior; Ruth Lehman, Sophomore; and Isabel Henderson, Freshman.

To be eligible for an A. C. pin one must have won an Alabama College "A" with an additional 1,000 points. Those who have been persevering enough to secure this honor are: Mildred Lloyd, Vivian Chandler, Mildred Sparks, and Ruth Lehman.

The girls earning 3,000 points receive a guard for their pins. Billie Sims and Vivian Chandler have attained this enviable goal.



MARY HOLBROOK, Camp Councillor  
SARA LATIMER, Hiking Councillor

# ATHLETIC AWARDS

# THE "A C" CLUB

The "A. C." Club is distinctly an athletic feature and is composed of those girls who have been outstanding in every field of sport offered on the campus; such as volley ball, basketball, hockey, baseball, tennis, swimming, and hiking.

The Alabama College "A. C.'s" are presented at a special service attended by the entire student body. This service is held toward the end of the year when other athletic honors are awarded.

Those winning letters are: Mildred Sparks, Jo Woodward, Mildred Lloyd, Maude Parsons, Mabel Wilder, Ann Lovill, Billie Sims, Tom Parrish, Ruth Lehman, Grace Wilson, Grace Peck, Martha Louise Lee, Marion Bozenhard, Jessie Forrest, Elizabeth Mitchell and Nellie James.





*The Year*

P I C T O R I A L L Y



# W E A R R I V E



Here we come to College, bag and baggage. ♣ Freshman concern,—sign or cosign? ♣ Writing that "first letter home". ♣ Proudly displaying that summer tan. ♣ Freshman making that "grand entry" and creating that "first impression" by spilling clothes. ♣ Good-bye,—for nine months. ♣ Bye, Mom, send me a box soon. ♣ Orientation Committee welcomes Freshmen. ♣ Soldiers and sailors alike.

One section of the Home Economics annual banquet. President Carmichael, Dean Napier, and Miss Eddy are at the speakers' table in the rear. ◀ Commodore Herbert H. Hartley, former Commander of the "Leviathan," on the steps of Palmer Hall. ◀ Two former graduates meet at Ramsay Hall on Homecoming Day. ◀ Major and Mrs. C. Douglas Booth. ◀ Elementary Education majors finishing up a practical project under the supervision of Miss Tutwiler. ◀ CWA workers lining off brick driveway on campus. ◀ Mrs. Coleman with her Christmas tree. ◀ Special added attraction, "Making Pictures for the Annual" or "Who's Afraid of the Big Bad Birdie."

W  
E  
W  
H  
A  
T-  
N  
O  
T  
S



# W E A T T E N D



To Technala  
Summer of  
Alice Cheney



To  
Technala  
with all high greetings  
from  
P. J. Shawn



Eunice Norton  
from 1924



To Auburn College Students  
Eunice Norton  
Metropolitan Opera  
October 20th 1924



## ARTISTS AND CONCERT SERIES

Alice Cheney, who played the lead in George Bernard Shaw's "Arms and the Man," presented by The Jitney Players. ♦ Ted Shawn, dancer. ♦ Eunice Norton, American pianist. ♦ Gladys Swarthout, mezzo-soprano, Metropolitan Opera. ♦ The Cincinnati Little Symphony, with Walter Heermann as conductor.

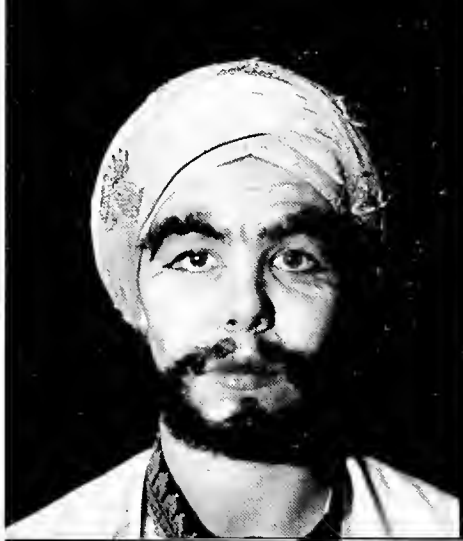
### ATHLETIC VODVIL

Bits of that original student presentation, the Athletic Board Vodvil. ♣ Here We Come to College chorus. ♣ The "Tappers" in costumes that helped give them an encore. ♣ Blue Prelude group. ♣ The "Tappers" again, black and white. ♣ Miss Osband directed dramatics; Miss Fairah directed singing; and Miss May and Miss Tyler directed dancing.

W  
E  
C  
R  
E  
A  
T  
E



# WE IMPERSONATE



The Alabama Players gave an excellent presentation of Charles Rann Kennedy's "Servant in the House" in the early part of the season. Eleanor Rennie as Manson. ♡ Alice Green as the Vicar. ♡ Iris Walton as Auntie. ♡ BeBe Fant as the Bishop. ♡ Evelyn Houck as Robert. ♡ Jessie Lee Raines as Mary. ♡ Margaret Vaughn as Rogers, the butler. ♡ Miss Ellen Haven Gould directed the presentation.

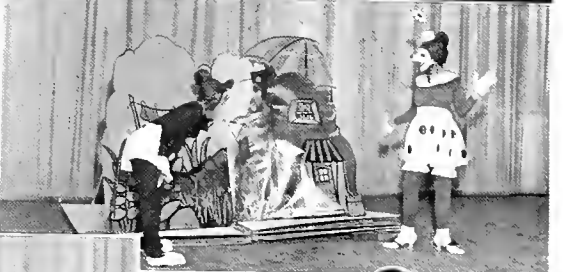
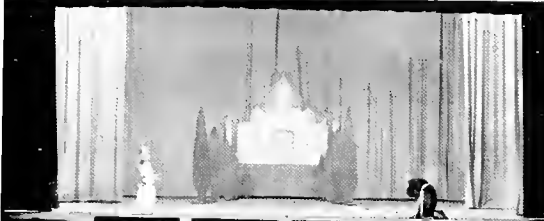


Noel Coward's "Hay Fever" was an outstanding Alabama Players' presentation. ◀ First picture, Jessie Lee Rains as Myra Arundel; Ebby Souders as David Bliss; and Eleanor Rennie as Judith Bliss. ◀ Second picture, Iris Walton as Jackie Coupton; Evelyn Houck as Sandy Tyrell; Cherokee Shirley as Sorel; Grace Wilson as Simon Bliss; Alice Green as Richard Greatham; Eleanor Rennie, Eddy Souders, Jessie Lee Rains; and Margaret Vaughn as Clara. ◀ The cast again: Front row, Jessie Lee Rains, Ebby Souders, Cherokee Shirley, Eleanor Rennie, Iris Walton; back row, Evelyn Houck, Margaret Vaughn and Alice Green.

W  
E  
P  
L  
A  
Y  
-  
A  
C  
T



# W E T R I U M P H



## PURPLES!

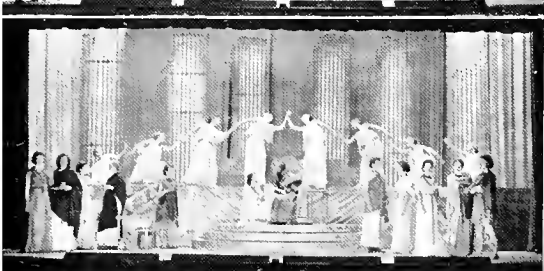
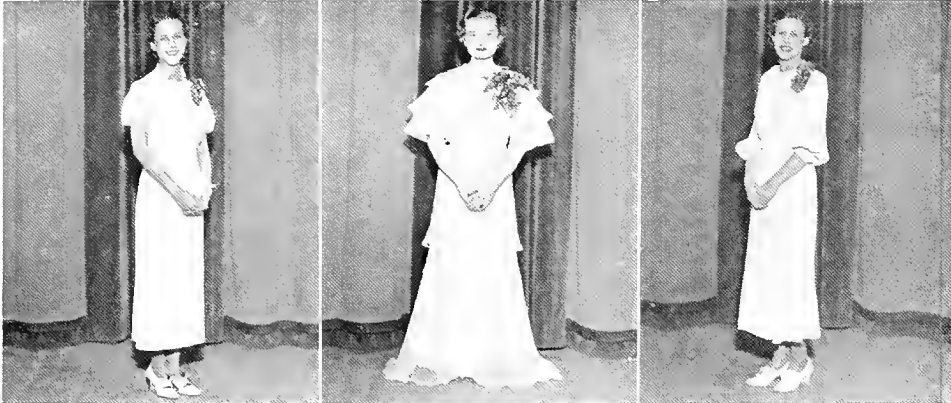
## THE WINNERS!

Lena Mae High, President of Student Government and Mistress of Ceremonies on College Night. ◀ Cherokee Shirley, Leader of the Purples, in her "toast dress." ◀ Eunice Thomas, Asst. Leader of the Purples. ◀ A scene from the Purple Impersonation, the Emperor, BeBe Fant, and the Master Builder, Margaret Vaughn, kneel before the Taj Mahal. ◀ The Music Committee: Margaret McElroy and Eleanor Watson. ◀ The cast of the Purple Stunt, "Mickey Mouse Goes Purple." ◀ The cast of the Purple Impersonation, "The Building of the Taj Mahal." ◀ Mickey (Grace Wilson) and Minnie (Ellie Ayres Burns) Mouse in an inquisitive mood. ◀ Co-authors of the Impersonation: Ebby Souders and Clare Shackelford. ◀ The Scenery Committee, headed by Ruth LeBaron, take a look at the Mother Goose Book which they designed and made. ◀ The "uppity-ups" of the Costume Committee: Sudie Bates Nageley and Margaret D'Orsay. Margaret designed those lovely flower heads in the stunt.

GOLDS!

Margaret Coley, Leader of the Golds. ♣ Jessie Lee Rains, who gave the toast for the Golds. ♣ Eleanor Rennie, Asst. Leader of the Golds. ♣ Minnie (Aileen Holley) and Mickey (Jessie Forrest) Mouse, stars of the "Animal Cracks Circus." ♣ Katherine (Cab Calloway) Zadek in one of her Harlem-Town moments. ♣ The Music Committee: Margaret Hartung and Sadie Humber. ♣ The cast of the Gold Stunt, "Animal Cracks Humber." ♣ Gold Pep Leader, Billie Siebart. ♣ Cast of the Gold Impersonation, "The Golden Touch." ♣ Katherine Zadek and Grace Lane, authors of Gold presentations. ♣ The Scenery Committee, headed by Jessie Forrest and Maxine Couch, clearing the stage in record time. ♣ The Gold Costume Committee Chairmen: Emily Starr Kirksey, Evelyn Calhoun, and Mary Fan Holstun.

WITH COLLEGE NIGHT



# WE HAVE MAY DAY



Queen Kitchens and her attendants. ♣ The Royal Throne, with the Queen and Best Citizen on it. ♣ President Rennie Leads Junior Class in May Day procession. ♣ The Big Two of May Day,—Dorothy Kitchens and Katherine Weaver. ♣ Freshmen seeing May Day for the first time. ♣ The Court. ♣ Seniors march through leafy archway. ♣ Grace Lane, Mistress of Ceremonies, with her Pages. ♣ Just after the Queen was crowned. ♣ Dance of the May. ♣ Members of Sophomore Class forming colorful archway. ♣ Just after one of the May Pole Dances.

On a certain May morning a Committee of Seniors steal away to hide the "crook" where no Juniors can find it. ◀ The finders of the "crook," Gladys Cook and Evelyn Calhoun, with Rennie, President of Class, in center. The finding of the "crook" by the Juniors meant Senior privileges for them. ◀ "X" marks the spot. In this tree the "crook" was concealed for three long days, with the Juniors suffering under the humiliation of Freshman privileges. ◀ The Senior Committee that hid the "crook," with Pauline Marsden, President of Senior Class.

# WE HIDE THE CROOK



# WE LEAVE



Seniors leaving Palmer Hall. ♡ Everybody seems to be trying to leave at once. ♡ Marion Davis takes that last look back. ♡ Special buses called in. ♡ Have a good summer, Agnes. ♡ Last moment "collegiates". ♡ "All aboard!" Aren't you going the wrong way, Bertie? ♡ Edith Morgan looks all "roped in." ♡ This little pig is going to have a flat nose all summer long.

# Features

Ruth  
Bryan  
Owen

FIRST woman to represent America in diplomatic service, Ruth Bryan Owen has demonstrated the principle which she advances that political service is a worthy profession for women. Before becoming American Minister to Denmark, she had served two terms as member of Congress. During the World War she served as a nurse in the voluntary aid attachment of the British Army. She defines politics as the "art of government" and urges that more women enter this field as a life's career.

From the United States Legation at Copenhagen, Ruth Bryan Owen sends greetings to our student body:

"Many thanks for your kind letter informing me that the editors of the yearbook of Alabama College have been kind enough to include me amongst the group of American women to be awarded a special place in this publication.

"I am sincerely appreciative of this honor and take great pleasure in sending the autographed photograph.

"With my very cordial greetings and best wishes to the student body of Alabama College."

Ruth Bryan Owen

The First Lady





FOREIGN MINISTER



# Elite Nite

To be a "First Lady" is something—but to be a First Lady for the First Time is a stupendous something.

This year, for the first time, the *Technala* Staff presented the Elite of Alabama College in a fanciful pageant entitled, "Tinker Bell and the Elves," or "What Happens When Alabama College Goes High-brow," in which Miss Eugenia May played the charming Fairy Godmother, and the dainty little girls and handsome little gentlemen of Montevallo's sub sub-deb set were the fairies and the elves who wrote the *Fairy Technala* and extolled the nominees with pleasing captions.

In the following pages we wish to present the results of the Elite Night election,—The First Ladies of Alabama College,—with the First Ladies of America,—enough to make the bravest heart stop beating to waltz time and step up to frenetic polka.



MISS EUGENIA MAY



*Margaret  
Coley*

---

---

---

*Miss Alabama College*



*Jessie Lee  
Pains*

---

---

---

*The Society Woman*



*William Cory II*

Katherine Cornell, tragedy queen of 1934, possesses that elusive quality which far transcends mere beauty in importance. Her career has been characterized by a series of successes which have haunted the lives of an ever-increasing following. She has been described as having "a dramatic forte for portraying roles sulphuric, sullen, smoldering, sensuous, and sentimental."

We are predicting for Cherokee, OUR first lady, success on both sides of the Atlantic and a "full ship" in the middle of it.

*The First Ladies*



*Cherokee  
Shirley*

O F T H E S T A G E

---

---

---

---

---

---

---

---

---

---



NEYSA McMEIN

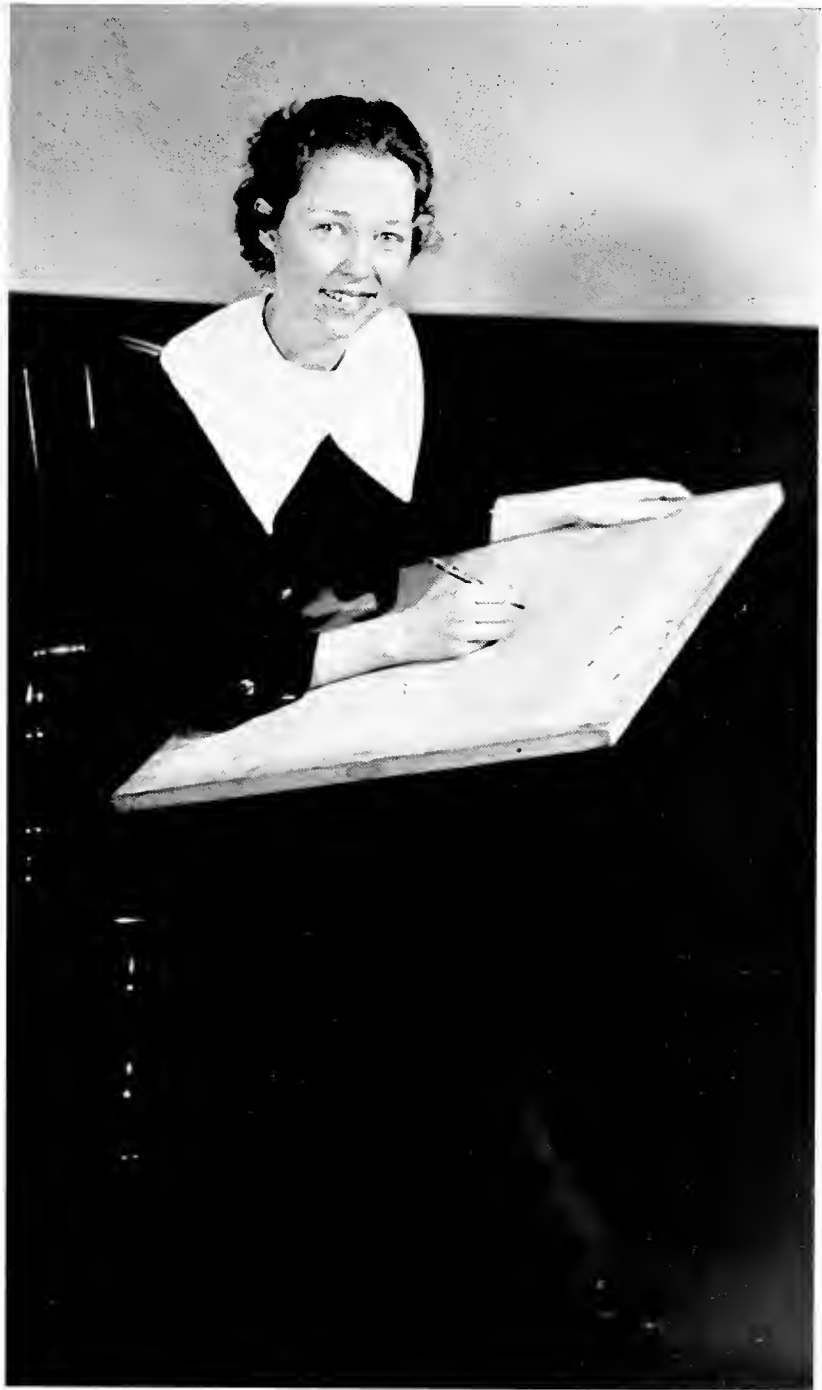
Artistic genius incarnate, Neysa McMein has the peculiar capacity to adapt her art to a variety of subjects, from making the first portrait sketch of the late President Harding and making fourteen war posters for the United States and France to designing covers for popular magazines. On the most elegantly individual stationery, Miss McMein sends to the students of Alabama College a note flatteringly informal from her studio in the Hotel des Artistes:

"It was very kind of you to give me such a pleasing caption, and to say I'm flattered is putting it very mildly.

"If I were in Montevallo I'd love to say some words to your students, but since I'm in New York trying to get a picture finished—and not being able to think of any bright thing to say—I'll just have to let it go and send you my photograph."

The First Ladies





*Jessie  
Forrest*

O F T H E P A L E T T E



*Eunice Norton*

A young musician who has the accomplishments to her credit that Eunice Norton has is unusual. She has appeared with the Philadelphia Symphony Orchestra, the New York Philharmonic, the Boston, Chicago, and Minneapolis Symphony orchestras. She has also made orchestral appearances in Germany.

Measuring up to our standard of requirements for a First Lady in Music, Sadie Humber excels in technical and interpretative musical ability and was voted the most able performer.

*The First Ladies*



*Sadie  
Humber*

I N M U S I C



## Willa Cather

A native of the South, Willa Cather has risen to fame by her enviable literary genius. Her works in romantic novels, one of which won the Pulitzer Prize in 1922, in poetry, and in newspaper editorials have gained for her universal acclamation.

Clara Shackelford, we look to you as our literary luminary in the not far distant horizon.

In a message to the students, Miss Cather sends her greetings and writes: "Best wishes to the students of Alabama College."

# The First Ladies



*Clare  
Shackelford*

O F T H E P E N

---

---

---

---

---

---

---

---



*Florence E. Allen*

Florence Allen, first woman Supreme Court Judge, combines the qualities that make for true greatness into a unified whole, a pattern of life which might be incorporated into the personalities of our chosen "first ladies" of Alabama College. Judge Allen sends us a most inspiring message:

"The world needs you! Today, as never before, women are called upon for cooperation in solving the great tasks that confront us. Every graduate of Alabama College will have to play her part in the building of the new order which must be established if America is to live. The country and the world need the youth, the enthusiasm, the intelligence of the college woman."

*The First Ladies*



*Marjorie  
Goff*

P R O F E S S I O N A L L Y

---

---

---

---

---

---

---

---



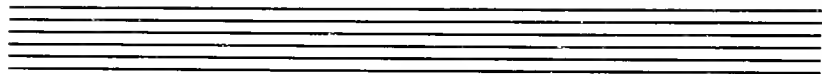
*Helen Wills*

Womanhood glorified, one who has idolized herself to America and won the admiration of the world—that is Helen Wills Moody. Not only is she an athlete, but she is also an active society woman and an artist of exceptional merit.

We have great hopes that our "Sparky," with her achievements in sports at Alabama College as a nucleus, may professionalize herself in a manner comparable to our national sportswoman.

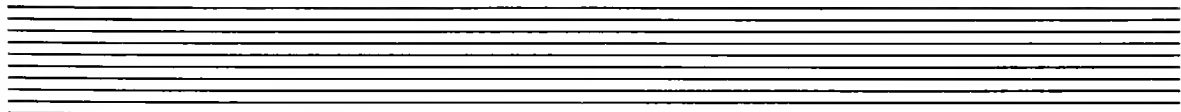
*The First Ladies*

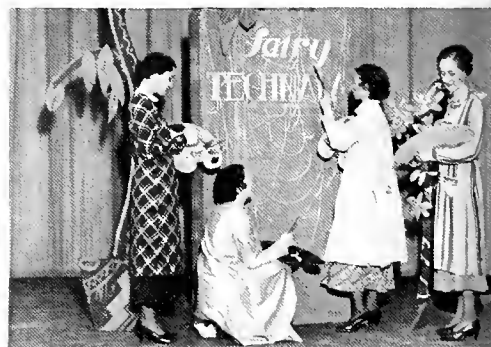




*Mildred  
Sparks*

I N S P O R T S / / /





# WE POINT WITH PRIDE

To all the nominees of Elite Night, because of their outstanding qualities which gained student recognition.

*Miss Alabama College:*

MARGARET COLEY, LENA MAE HIGH, MARION POZENHARD, ALINE BLAIR, EFFIE COWAN, DOROTHY DAY.

*The Society Woman:*

ELIZABETH ROBERTSON, JESSIE LEE RAINS, MARY KATE TROUP, ETTIE BEELAND ROGERS.

*The Athlete:*

GRACE WILSON, TOM PARISH, MILDRED SPARKS, RUTH LEHMAN, GLEN YOUAMAN, VIVIAN CHANDLER.

*The Business Woman:*

CAROLYN REDDOCH, FRANCES KOCH, MARJORIE GOFF.

*The Artist:*

JESSIE FORREST, RUTH LEBARON, CLARA DALE, MARGUERITE COUCH.

*The Actress:*

CHEROKEE SHIRLEY, ELEANOR RENNIE, MARGARET VAUGHN.

*The Writer:*

LENA CLARE SHACKELFORD, GRACE LANE, EUNICE THOMAS, ELIZABETH SOUDERS, AGNES PLANT.

*The Musician:*

MARGARET MCELROY, SADIE HUMBER, KATHERINE SAVAGE, WILLIE GLEA HUDSON, MARGARET HARTUNG.

# The Selection of BEAUTIES

**S**WINGING free of the time-worn custom of sending to some celebrity sixteen photographs from which to pick four beauties, this year's staff decided to have them chosen by personal appearance.

To Ted Shawn, world famous dancer, was given the arduous and bewildering task of deciding the 1934 beauty styles. Viewing a beautithon of sixteen of our loveliest girls on the stage of Palmer Hall, Mr. Shawn, with knitted eyebrows, looked from blonde to brunette, tapped his foot,—and then very deliberately wrote down his decision to be—



To  
Technala  
with all high greetings  
from  
*Ted Shawn*

---

---



*Aline Blair*

---

---

---

B E A U T Y

B E A U T Y



*Billie Hill*

*Mary  
Ellen Worthy*



---

---

---

B E A U T Y

B E A U T Y



*Mary  
Kate Croup*



*Ann Harding*

## THE STAFF'S CHOICE

*We have chosen Ann Harding as our "first lady in beauty" because, to us, she represents the totality of what womanly beauty should be.*



Organizations

Mary  
Emma  
Woolley

*P*RESIDENT of Mount Holyoke College since 1900, first woman delegate to World Disarmament Conference, historian, and scholar, Mary Woolley, like Francis Bacon, appears to have "taken all knowledge as her province." As a leader, a promoter, and an organizer her name is prominently connected with many leading educational movements. An inspiring message is hers to the students of Alabama College:

"It gives me peculiar pleasure to be included in the 1934 volume of your yearbook and to send you a brief message.

"We are often told that the age in which we are living is a most critical and difficult one,—a statement which is perfectly true. I like to have you think of it, also, as an inspiring one because there is such great need of the best that you can bring to it,—that best for which you are now preparing."

*Mary Woolley*

*The First Lady*



MEMBER OF DISARMAMENT CONFERENCE



# GOVERNMENT

# STUDENT



LENA MAE HIGH  
President

No student office is more burdened with responsibility and more marked with eminence than that of President of Student Government. Lena Mae has handled this year's problems with characteristic diplomatic skill. She has successfully fulfilled her mission of harmonizing student life and student regulations on the campus and has retained her most enviable poise throughout her administration.

Aline, as Vice-President, has been an indispensable aid. In Lena Mae's absence, she has proceeded with cautious courtesy and quiet dignity. Her charming personality and her keen sense of fairness have blended with the ideals set by her office.



ALINE BLAIR  
Vice-President

# T H E



## Members

### *Senior Representatives*

EVELYN CALHOUN      JEANNETTE SNEAD  
ANN LOVILL            SARA LOU McDONALD

### *Junior Representatives*

KATHRYN MARTIN      ELNORA GAMMAGE  
                                    NEWTON MILLIGAN

### *Sophomore Representatives*

ISABEL HENDERSON    MARY NEWMAN GRAVES

### *Freshman Representative*

VIVIAN BOOKER

### *House Presidents*

*Ramsay* . . . . . VIORENE CRUMLY  
*Hanson* . . . . . MARY LORENZ  
*Stallworth Hall* . . . . . JEAN RICHARDSON  
*Kennedy Hall* . . . . . JANE SPRUIELL  
*Halcy Hall* . . . . . MARION DAVIS

# E X E C U T I V E

# . B O A R D



The Student Government Association has functioned through its various departments, not to impose restrictions upon its members, but to sponsor those activities which would meet the needs of student life most effectively.

The Association sponsors, at the beginning of the term, a formal reception for the faculty, which adds geniality to the relationship between students and faculty members.

College Night is the pride and glory of the Student Government Association. The stupendous task of hand-

ling the multitude of people, who come every year to see the triumph of the year, is one of the phases of useful service rendered by the Student Government.

This year in Student Government activity an innovation has been the beauty parlor. The beauty parlor is equipped with modern appliances and operated by students who earn their college expenses in this way.

"Pay Day" is an effort on the part of the Student Government Association to assist the campus organizations in settling financial obligations before embarking on the year's program.

# THE PRESIDENT'S COUNCIL



The purpose of the President's Council is to stimulate interest in extra-curricular activities, to vote on the formation of new clubs, and to attend to all business concerning clubs.

AGNES PLANT, *President*

OLA MAE ROBERTSON, *Secretary*

## MEMBERS

<i>Alabama Players</i> . . . . .	MARGARET VAUGHN
<i>Association of Childhood Education</i> . . . . .	CONSTANCE MARSDEN
<i>Athletic Board</i> . . . . .	MILDRED LOYD
<i>Delta Phi Alpha</i> . . . . .	VELMA FINCH
<i>Editor, "Alabamaian"</i> . . . . .	EUNICE THOMAS
<i>Editor, "Technala"</i> . . . . .	MARJORIE GOFF
<i>Editor, "Tower"</i> . . . . .	CLARE SHACKELFORD
<i>English Club</i> . . . . .	ELEANOR RENNIE
<i>Forensic Club</i> . . . . .	ALICE STALLWORTH
<i>Home Economics Club</i> . . . . .	ESSIE MAE HALL
<i>International Relations Club</i> . . . . .	EDNA MARTIN
<i>Junior Class</i> . . . . .	MARION BOZENHARD
<i>Junior League of Women Voters</i> . . . . .	VIOKENE CRUMLY
<i>Kappa Delta Pi</i> . . . . .	ELIZABETH ROBERTSON
<i>Math Club</i> . . . . .	JENNIE HOWLE
<i>Musical Council</i> . . . . .	EMMA ALISON
<i>Omicron Nu</i> . . . . .	MARY HANNAH JOHNSON
<i>Physical Education Club</i> . . . . .	LENA OATES
<i>Publication Board</i> . . . . .	EVELYN POW
<i>Scribbler's Club</i> . . . . .	MARY HOLBROOKE
<i>Secretarial Club</i> . . . . .	CAROLINE REDDOCH
<i>Senate</i> . . . . .	GRACE LANE
<i>Social Service Club</i> . . . . .	SARAH LOU McDONALD
<i>Sophomore Class</i> . . . . .	BETTY BISHOP
<i>Speech Club</i> . . . . .	JESSIE LEE RAINS
<i>Student Government</i> . . . . .	LENA MAE HIGH
<i>Y. W. C. A.</i> . . . . .	DOROTHY DAY



# S E N A T E .

# S T U D E N T

## OFFICERS

- President* . . . . . GRACE LANE
- Vice-President* . . . . . FAN PLEDGER
- Secretary* . . . . . FRANCES RIBBLE
- Treasurer* . . . . . EVELYN POW

## COMMITTEE CHAIRMEN

- Public Service* . . . . . MARY FRANCES MERRILL
- College Relations* . . . . . FRANCES KOCH
- Publicity* . . . . . IDA COKER
- Personal Service* . . . . . KAT SAVAGE



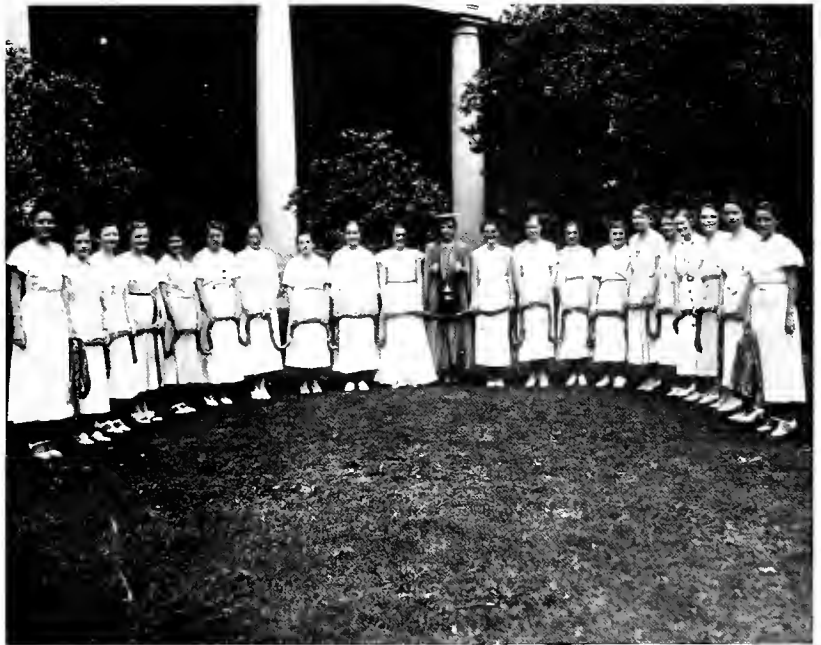
GRACE LANE, President

High on the list of our major student officers, Grace Lane holds indomitable sway. Grace has been so efficient in her direction of the activities of the Senate this year that we have been compelled to sit back and beam with civic pride. She is extraordinarily capable and a very versatile leader.



# SENATE WORK

The Honor Group just before escorting Katherine Weaver, 1933 Best Citizen, to the throne on May Day. ♣ Mistress of Ceremonies, Grace Lane, and her page, Harriet Lynch. ♣ The faculty committee on May Day: Mr. Ingalls, Miss Farrah, Miss Mossdrop, Miss Flint, and Miss Osband. ♣ The Senior May Pole Dance. ♣ The Royal Court of May Day. ♣ Evelyn Houck and Petty Lorenz hold a Book Week poster up for inspection. ♣ Two "bookish" young ladies, Hines and Coker. ♣ Ruby Livings and Lena Clare Shackelford trying to slip those books back in the library! And Senators, too! ♣ Miss Osband just after her Book Week talk in Convocation. ♣ Cast of the Book Week skit: Ebby Souders, Iris Walton, Eleanor Rennie, Cherokee Shirley, and Katherine Zadek. ♣ Orientation Week—who says Elnora is frail? See her sling this Freshman's bag! ♣ Senators meeting freshmen at first of school. We should have had a picture of a train and taxi, too. Ask ANY Senator!





The Sociology students take a little time off between field trips to be Senators,—Shorty Plant, Marie DeLoach, and "Stell" Newberry (MRS. to you!). ♣ Three Senatorial grins! Fan Pledger, Ida Kirkwood, and Billie Sims. ♣ "Dimples" Coley and "Dot" Day. Dot feels like a Senior,—you can tell by the expression. ♣ Eugenia and Julia Sellers, but we don't know which is which. Just take your choice. Your guess is as good as ours. ♣ One Sunday afternoon, and four Senators give the camera a break: June Hamilton, Jennie Howell, Lib Robertson, and Teresa Thomas. ♣ Madame President, Margaret McElroy, and Dot Hix in an endeavor to look coy. ♣ Rosie and Blennie on Main front steps. Watcha mean getting on the second step, Rosie? ♣ Music majors relaxing on the back steps of Calkins: Hartung and McElroy. ♣ Kat, Aline, and Elnora, Junior Senators. ♣ Those sophisticated Sophomores, Frances Ribble and Mary Kate Troup. ♣ Mary Frances didn't catch the joke,—English? ♣ Peggy says it was the wind that made her hair stand up, but don't believe it,—it's natural. ♣ That dignified Senior pose rendered by Frances Koch and Epie Pow. ♣ Kat Martin with a New York smile and "Chicken" Wilson looking as though she just received the posture trophy.

A N D P L A Y

# Y O U N G . W O M E N ' S



DOROTHY DAY

## OFFICERS

- DOROTHY DAY . . . . . *President*  
 MARGARET COLEY . . . . . *Vice-President*  
 ISABEL HENDERSON . . . . . *Secretary*  
 EVELYN HOUCK . . . . . *Treasurer*

The Y. W. C. A., under the capable and sincere leadership of Dorothy Day, has maintained to a high degree the standards of its aims, which are: to realize a full and creative life through knowledge of God, to have a part in making this abundant life possible for all people, and through this to seek to understand Jesus and to follow Him.

This organization is led by a Cabinet composed of the president and her assistants, and it is affiliated with the National Y. W. C. A. It stands out among the principal organizations on the campus because of its unusual activities. Some of its major activities are: the fostering of the Big Sister-Little Sister movement, a special feature of Orientation week which aids the incoming freshmen in adjusting themselves to their new environment; and "Step-Singing," which is an integral part of every girl's life at Alabama College, and which does more towards uniting us in a common bond of congenial fellowship than any other program.

The Tea Room is a special Y. W. C. A. feature. It serves the two-fold purpose of affording some students an opportunity to pay expenses, and is a convenient and pleasant place to indulge in an "impromptu forum" and settle all important world issues over your favorite candy bar.

The Y. W. C. A. is also responsible for the selection of Alabama College delegates to the Blue Ridge Convention. The inspiration received from the convention is felt in the enthusiastic spontaneity with which the delegates fulfill their duties on the campus.

Programs in interest of world problems are planned as a monthly Y. W. C. A. presentation. Among the more outstanding lecturers who were brought to the campus, was Kirby Page, editor of "The World Tomorrow" and author of a number of books on international, social, and religious questions. Mr. Page was on the campus for several days lecturing on Socialism and religion.

# CHRISTIAN ASSOCIATION



### CABINET MEMBERS

Johnson, Robertson, Raines, Wadsworth, Fant, Lee, Salter, Ribble, Kirkwood, Hill.

### SOPHOMORE COUNCIL

Hill, Claughton, Davis, Deloney, Deloney, Howell, Horton, Kreider, Kirksey, Ledbetter, Ledbetter, Liles, Moss, Sellers, Sellers, Stanley, Swift, Reeves, Youngblood.

### FRESHMAN COMMISSION

Alley, Beckham, Buck, Burns, Calton, Claughton, Dale, Dubberley, Ellis, Fowler, Guinn, Harper, Harris, Hart, Jones, Kyser, Lollar, Luck, Massingill, May, Michaels, McLendon, Morrison, Porter, Seibert, Sturgess, Teal, Turner, Watson.



The "Y" Cabinet trying to look like a happy family. Pick out mama and papa. ♡ Where DID you get that pose, where, oh where, oh where? ♡ Looks like a rowing crew, but it's a bit of the Freshman Commission. ♡ Publicity Chairman, Ruby Salter. ♡ Ola Mae Robertson mothers her little chickens under her wing. Frances Lee looks particularly demure. ♡ A double exposure! ♡ Smile, girls! Billie Hill and "a Ledbetter". We don't know which. ♡ Best Foot Forward, by Margaret Coley, Dot Day, and BeBe Fant ♡ Sophomore Council en masse!

# Y'S AND OTHER Y'S

# Y'S AND OTHER Y'S



A variety of expressions! but Ott Beckham, left, wins the cast iron powder puff. ♣ That's just a pose. Don't let the freshmen kid you. ♣ A triple threat in the way of grins. ♣ Aw, Pat, it isn't half as cold as you seem to think it is. Lib Claughton can take it! ♣ Why so serious? Those Sophs always have something on their minds(?) ♣ Jess'e Lee (sophisticated) Rains and Ida (rah-rah) Kirkwood sunning on Sunday. ♣ What's the matter, Elizabeth? Smoke get in your eyes? ♣ Facing Life(?) squarely and "face to face". ♣ Virginia Calton isn't usually so bashful. ♣ There must have been a whole flock of birdies to see in this picture,—no,—only three.

# KAPPA DELTA PI

National Honorary Educational Fraternity  
*(Founded at the University of Illinois in 1911)*

Kappa Delta Pi fosters the maintenance of the highest educational, fellowship, scholarship, and achievement in educational work.

## BETA LAMBDA CHAPTER *(Established 1928)*

*President* . . . . . ELIZABETH ROBERTSON  
*Vice-President* . . . . . EMMA ALISON  
*Recording Secretary* . . . . . MARY HOLBROOK  
*Corresponding Secretary* . . . . . CAROLYN REDDOCH  
*Treasurer* . . . . . MARJORIE GOFF  
*Reporter* . . . . . EVELYN POW  
*Historian* . . . . . MARGUERITE COUCH  
*Counselor* . . . . . DR. KATHERINE VICKERY

### FRATRES IN FACULTATE

MISS LILLIAN BARSDALE	MISS STELLA STEPHENS
MISS MAMIE BRASWELL	MISS ELIZABETH UTTERBACK
MISS LELAH BROWNFIELD	DR. A. W. VAUGHAN
DR. M. L. ORR	DR. KATHERINE VICKERY

### FRATRES IN COLLEGIO

EMMA ALISON	ESSIE MAE HALL	MARGARET MCELROY
CHARLY ARMSTRONG	MARGARET HARTUNG	DR. T. H. NAPIER
ROSA BRANNON	DOROTHY HIX	DR. B. L. PARKINSON
DR. O. C. CARMICHAEL	MARY HOLBROOK	EVELYN POW
MARGUERITE COUCH	ETHEL HOLMES	JESSIE LEE RAINS
MAXINE COUCH	JENNIE HOWLE	CAROLYN REDDOCH
VELMA FINCH	DR. H. W. JAMES	ELEANOR RENNIE
MRS. ZEPHIE FULFORD	RACHAEL KEYNTON	ELIZABETH ROBERTSON
MARJORIE GOFF	ANNE LOVILL	BILLIE SIMS







### ALPHA GAMMA CHAPTER

This society recognizes and promotes scholarship, leadership, and research in the field of Home Economics.

#### OFFICERS

*President* . . . . . MARY HANNAH JOHNSON  
*Vice-President* . . . . . ESSIE MAE HALL  
*Secretary* . . . . . EVELYN DENSON  
*Treasurer* . . . . . MARY BEN CARPENTER  
*Editor* . . . . . EFFIE COWAN

#### FACULTY ADVISER

MISS ELEANOR HAILE

#### MEMBERS

EVELYN CALHOUN                      EFFIE COWAN  
 MARY BEN CARPENTER              ESSIE MAE HALL  
 MARGARET HORTON  
 MARY HANNAH JOHNSON  
 KATHRYN MARTIN  
 ANNE WATSON

# O M I C R O N N U

# A L A B A M A . P L A Y E R S

The Alabama Players is an honorary dramatic club, membership being based upon outstanding work in dramatics. Its purpose is to stimulate a greater appreciation for the drama at Alabama College.

## OFFICERS

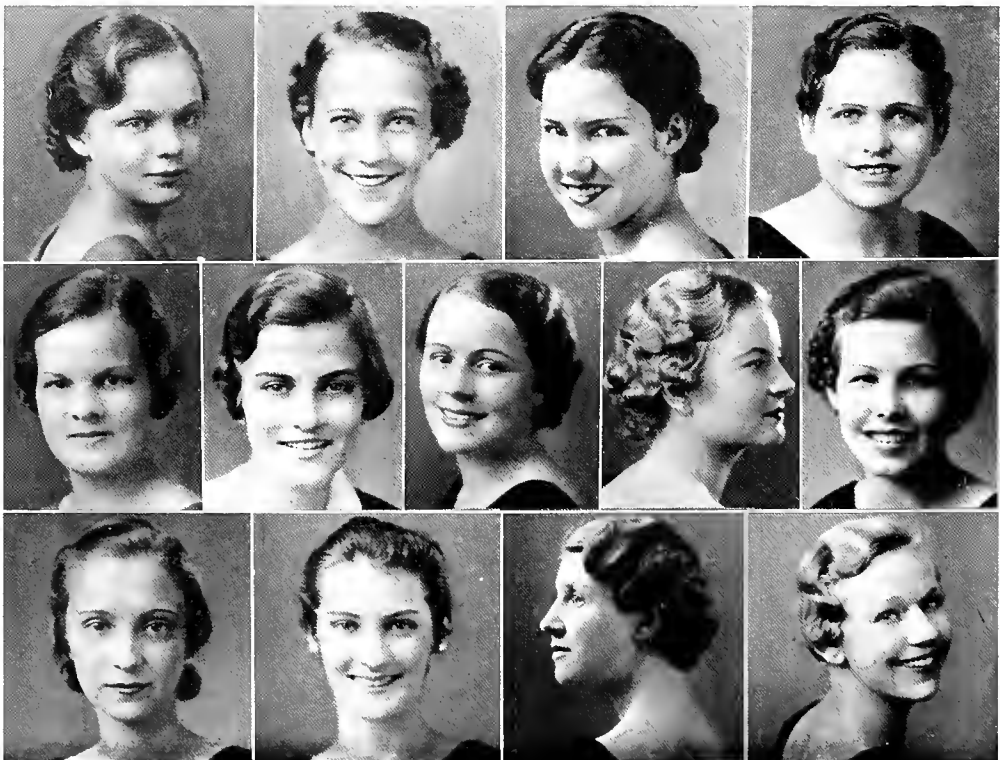
*President* . . . . . MARGARET VAUGHN  
*Vice-President* . . . . . CHEROKEE SHIRLEY  
*Secretary* . . . . . EVELYN HOUCK  
*Business Manager* . . . . . ELIZABETH SOUDERS

## FACULTY ADVISERS

*Director* . . . . . ELLEN-HAVEN GOULD  
*Associate Director* . . . . . HELEN OSBAND

## MEMBERS

MARGARET COLEY	ELEANOR RENNIE
BEBE FANT	CHEROKEE SHIRLEY
MARJORIE GOFF	ELIZABETH SOUDERS
ALICE GREEN	MARGARET VAUGHN
EVELYN HOUCK	IRIS LEE WALTON
GRACE LANE	GRACE WILSON
JESSIE LEE RAINS	JOSEPHINE WOODWARD





The Mathematics Club is to promote a spirit of good fellowship among the students of the Mathematics Department and to foster an interest in Math. Club programs give phases of math not found in regular college courses.

OFFICERS

*President* . . . . . JENNIE HOWLE  
*Vice-President* . . . . . JULIA BARNES  
*Secretary-Treasurer* . . . . . ANNIE B. PARISH

FACULTY ADVISERS

DR. ROSA JACKSON                      MISS MAMIE BRASWELL

MEMBERS

JULIA BARNES	ANNIE B. PARISH
IDA KATHRYN COKER	ESSIE PARKER
NELL CROSTHWAITE	BETTY PHILLIPS
GRACE ETHERIDGE	JEWEL WEZE SAWYER
SARA FLOREY	ANITA SMITH
ELSIE GOLSON	ELAINE SMITH
JENNIE HOWLE	JANIE KATE SMITH
RUTH KRUDOP	JANE SPRUIELL
ANN LOVILL	JULIA TERRELL
LUCILLE MAHAN	ELEANOR THRASHER
AGNES SCOTT OWENS	FRANCES WILSON
PAT YOUNGBLOOD	

B  
U  
C  
L  
U  
B

M A T H .

# P H Y S I C A L

The purpose of this organization is to stimulate interest and to develop a professional as well as a social spirit among its members.

## FACULTY ADVISER

MISS ALFREDA MOSSCROP



## MEMBERS

VIRGINIA ALVERSON	BEVERLEY LEWIS
LUCILLE BELL	ELEANOR LEWIS
FLORA LEE BORDEN	MILDRED LLOYD
MARION BOZENHARD	MARGARET MCCRODIE
JEANETTE BRUCE	MARY ELIZABETH McLAIN
JIMMIE LEE CHAMBERS	LILLIE MAE McLAIN
VIVIAN CHANDLER	EVELYN MARTIN
VIRGINIA CLARK	ELISABETH MITCHELL
LAURA COLEMAN	SARA MORRIS
RUBY NELL DAVIS	SARA MULLEN
MARTHA DEAN	ANNIE NAISH
CHRISTINE GREER	LENA OATES
MARTHA HANSON	TOM PARISH
ELLA MAE HARGROVE	MAUDE PARSONS
JULIA HARRIS	MARJORIE PAYNE
ELIZABETH HICKS	GRACE PECK
MARY HOLEROOK	LOUISE POLLARD
HAZEL HOLT	ANN ROBISON
KATHRYNE HORTON	BERMA RODEN
IDA JACOBS	WINIFRED SHERER
NELLIE JAMES	BILLIE SIMS
MILDRED JEFFRIES	MILDRED SPARKS
EMMA JOHNSON	LOU SKINNER
CHRISTINE JONES	MILDRED WILD
FRANCES L. JONES	GRACE WILSON
LOUISE JONES	JO WOODWARD
MARGARET JOYCE	JEAN YARBROUGH
RUTH LEHMAN	GLENN YOUNG

## OFFICERS

*President, LENA OATES*  
*Vice-President, RUTH LEHMAN*

## HONORARY MEMBERS

MISS EUGENIA MAY	MISS EDYTHE SAYLOR
MISS ALFREDA MOSSCROP	MISS ELSA SCHNEIDER
MISS JOSEPHINE TYLER	



# E D U C A T I O N

# • C L U B



Alverson, Bell, Bordon, Bozenhard, Bruce, Chambers, Chandler, Greer, Hanson, Hargrove, Harris, Hicks, Halbrook, Jeffries, Johnson, Jones, Joyce, Lewis, Lloyd, McCrorie, McLainey, Martin, Mitchell, Morris, Mullen, Parish, Parsons, Payne, Peck, Pollard, Sherer, Sims, Sparks, Wilson, Woodward, Yarbrough, Youman.

# E D U C A T I O N

The purpose of this organization is to bring into active cooperation all childhood education interests; to promote the progressive type of education in nursery school, kindergarten and primary and elementary grades, and to raise the standard of the professional training for teachers and leaders in this field.

## OFFICERS

*President* . . . . . CONSTANCE MARSDEN  
*Vice-President* . . . . . MARGARET COLEY  
*Secretary* . . . . . MARY VIRGINIA WHITE  
*Treasurer* . . . . . RUBY LIVINGS

## MEMBERS

### Seniors

KAYRON CAMPBELL  
 MARGARET COLEY  
 DOROTHY DAY

VELMA FINCH  
 ETHEL HOLMES

MARY LEE MAHAFFEY  
 CONSTANCE MARSDEN  
 SAMMIE FORREST MOORE

### Juniors

ELEANOR SHEALY ALLEN  
 EATRICE ALLRED  
 METHA DAVIS  
 JULIA MAE GRESHAM

DELLA MAE JAMES  
 RUBY LIVINGS  
 ANNIE FORD MCELROY

MRS. LUCY O. MARTIN  
 MRS. EDNA HERRIN STREATER  
 MARY VIRGINIA WHITE  
 MARY ELLEN WORTHY

### Sophomores

REIHA POLK BROWN  
 MARJORIE BROWNE  
 MAURINE DOBBS  
 NELL GILMORE

SARAH NELL GOFF  
 WILLIE MAE HILL  
 NELL HINES  
 EVELYN HOUCK  
 WILLIE LUTHER

ELIZABETH MERRILL  
 ALVARA REYNOLDS  
 MARGARET VAUGHN  
 ELIZABETH YOUNGBLOOD

### Freshmen

DOROTHY ALLEY  
 ROSAMOND ANDREWS  
 VESTA BENSON  
 MATTIE VANN BRABHAM  
 MARY IRENE BROWN

LUCILE BROYLES  
 ALICE CROOM  
 MARY EMMA DICKEY  
 WYLYNA DOZIER  
 VIRGINIA HARRIS

JANIE CLAIRE HAWKINS  
 ELEANOR JEFFERS  
 NELLE SAMFORD  
 MRS. VERA T. SEALE  
 MARY WANDA SEIBERT



# T H E A R T C L U B



The aim and function of the Art Club is to develop appreciation of art and stimulate interest in those fields of art with which students will come in contact.

### OFFICERS

- President* . . . . . RUTH LeBARON  
*Vice-President* . . . . . LOIS WILLOUGHBY  
*Secretary-Treasurer* . . . . . MARY LOUISE KREIDER

### MEMBERS

- |                     |                       |
|---------------------|-----------------------|
| ELEANOR ALLEN       | RUBY LIVINGS          |
| ANN COLLINS         | ELIZABETH MAY         |
| MARGUERITE COUCH    | MILDRED PARSONS       |
| CLARA DALE          | ELIZABETH RAY         |
| LAURA ENSLEN        | BEATRICE ROWELL       |
| JESSIE FORREST      | RUBYE SALTER          |
| DAISY FULLER        | MARY ELIZABETH SANKEY |
| WATANA GROVER       | KITTY SIEELE          |
| FRANCES HAIN        | MARY KATE TROUP       |
| EDITH IVERY         | LOUISE WALSH          |
| MARY LOUISE KREIDER | MABEL WILDER          |
| RUTH LeBARON        | LOIS WILLOUGHBY       |
| VIRGINIA YEILDING   |                       |

# SECRETARIAL CLUB

The purpose of the Secretarial Club is to further interest in the Secretarial Department, to promote business efficiency, and intellectual development.

## OFFICERS

*President* . . . . . CAROLYN REDDOCH      *Vice-President* . . . . . AGNES POSTELL  
*Secretary-Treasurer* . . . MARY LEDBETTER

## FACULTY ADVISERS

MISS LELAH BROWNFIELD      MRS. LUELLA GRISSOM

## MEMBERS

SARA LUCY ALLEN  
 KATE ALISON  
 ELEANOR ANDERSON  
 ELIZABETH ASBURY  
 HELEN BAKER  
 BERT BARNETTE  
 JACK BOWDEN  
 ALICE BRADFORD  
 SARA BRADFORD  
 CHRISTINE BURDESHAW  
 ELSIE BURDESHAW  
 MARJORIE BURGE  
 LOUISE BURNS  
 AUTRESS BUSBY  
 CAROL CARNATHAN  
 MARY LULA CHRISTOPHER  
 VIRGINIA COLTON  
 EVELYN CONKLE  
 MARY EMMETTE CRUM  
 ADA DELONEY  
 ANNA DELONEY  
 GRACE DREADEN  
 BERTHA ELLIS  
 CHRISTINE FAULKENBERRY  
 KATHERINE FLOREY

JENNIE HOBBS GARTH  
 LOUISE GLASS  
 MARJORIE GOFF  
 MARY EVELYN GWALTNEY  
 LORRAINE HALL  
 MARIE HARPER  
 MARY ELLEN HARRISON  
 PENELOPE HUGGINS  
 CLARA HUXFORD  
 JEWELL JACKSON  
 MILDRED JONES  
 RACHEL KEYNTON  
 IDA KIRKWOOD  
 VIRGINIA KNIGHT  
 FRANCES KOCH  
 LURLINE LATHAM  
 LESLIE LEATHERWOOD  
 ADELAIDE LEDBETTER  
 MARY LEDBETTER  
 DOROTHY LILES  
 BROWNIE LOLLAR  
 CHRISTINE McLAUGHLIN  
 MARY ALYCE MITCHELL  
 SARA MOORE

RUTH MOSS  
 AYLMER MASSINGILL  
 LENA NELSON  
 LAURA NORTH CUTT  
 MABEL PETERS  
 SARA ANN PHILLIPS  
 AGNES POSTELL  
 CAROLYN REDDOCH  
 JUNE REID  
 VIRGINIA RHODES  
 FRANCES RUSHING  
 MAHAN RULLAND  
 DOROTHY SESSIONS  
 ELIZABETH SITZ  
 BELVA STRICKLAND  
 CECILE THOMPSON  
 CHARLIE VERNE TINNEY  
 DAISEY TURNER  
 MARGARET WAKEFIELD  
 CLARICE WALTON  
 SARA E. WILLIAMS  
 SARA A. WILLIAMS  
 MYRTICE WOODS  
 ELIZABETH YARBROUGH  
 MILDRED YARBROUGH







S  
C  
I  
M  
I  
C  
S  
  
O  
N  
O  
N  
E  
C  
C  
O  
N  
O  
M  
I  
C  
S

The purposes of the Home Economics Club are to stimulate interest in home economics and to develop professional and social spirit among its members.

OFFICERS

- |                                 |                   |                                   |                     |
|---------------------------------|-------------------|-----------------------------------|---------------------|
| <i>President</i> . . . . .      | ESSIE MAE HALL    | <i>Treasurer</i> . . . . .        | KATHERINE MARTIN    |
| <i>Vice-President</i> . . . . . | OLA MAE ROBEKISON | <i>Social Director</i> . . . . .  | SUDIE BATES NAGELEY |
| <i>Secretary</i> . . . . .      | ROSALIE HENDERSON | <i>Faculty Director</i> . . . . . | MISS BLANCHE TANSIL |

MEMBERS

**FRESHMEN:** Jewel Baker, Annie Barr, Mildred Brooks, Ruth Bushell, Marguerite Cook, Sue Deloney, Mary Jack Dobson, Virginia Fisch, Mary Emily Foye, Katherine Garret, Frances Garrett, Callie Hardy, Edith Harper, Sara Ellen Hays, Mary Olive Hearn, Mary Owen Holland, Mary Belle Irby, Lillian Jenkins, Thelma Johnson, Elaine Jordan, Edyth Kerr, Frances Larmore, Lillian Lee, Ruth Luck, Florence McCorkle, Earline Mills, Fannie Louise Moore, Edith Morgan, Mary Hilda Peters, Elizabeth Powers, Phyllis Plank, Vivian Powell, Frances Ramsey, Anne Roddy, Susan Sitz, Sara Frances Smith, Elizabeth Stephens, Margaret Tansett, Lucy Webster, Betty Anne Wilcox.

**SOPHOMORES:** Nelle Buck, Edith Burton, Eloise Clark, Quintella Cox, Mary Agnes Curtis, Margaret D'Orsay, Ozemma Formby, Dorothy Frazier, Effie Lou Gaines, Gwendolyn Gentry, Ruth Kate Guin, Mary Evelyn Halling, Rosalie Henderson, Louise Herbert, Eloyse Jones, Anna Pauline King, Norma King, Anne Lea, Julia McDonald, Winifred Lee Merrell, Juliet Mitchell, Flora Mitchell, Christine Moody, Willie Grey Northam, Ruby Patton, Elizabeth Pritchell, Jean Richardson, Mary Ella Roberts, Emma Roper, Louise Sanders, Mary Smith, Lila Spearman, Genevieve Stallworth, Virginia Stallworth, Elizabeth Stanley, Bertha Belle Tull, Mary Frances Ward, Demorhea Wright, Mary Evelyn Yates, Mary Elizabeth Yost, Sarah Latimer, Evelyn Pond, Vera Powell, Virginia Coker, Stella Ethridge.

**JUNIORS:** Christine Beasley, Katherine Bilbro, Aline Blair, Gloe Cooner, Hazel Cotton, Mrs. Natalie Edgar, Mary Elizabeth Feagin, Elnora Gammage, Mildred Hall, Loraine Harper, Mildred Hart, Armine Hays, Virginia Hines, Emily Starr Kirksey, Kathryn Martin, Newton Milligan, Dorothy Myrick, Willie B. Pettit, Sue Powers, Ola Mae Robertson, Jeanette Simmons, Lillian Shulenberger, Ruth Stovall, June Taylor, Margaret Thomas, Juanita Warr, Bess Yarbrough, Lillie May Johnson, Pearl Cater, Hazel Orvin, Marguerite Rhodes, Lottie Kate Shrivall, Helen Thompson, Nevada Whitehead.

**SENIORS:** Nellie Bland, Viola Burks, Evelyn Calhoun, Mary Ben Carpenter, Kathleen Cobb, Virginia Cook, Effie Cowan, Elodie Davis, Willie Pearle Gammell, Essie Mae Hall, Edyth Hammer, Amy Henderson, Georgia Hill, Mary Fannie Holstun, Margaret Horton, Lucile Johnson, Mary Hannah Johnson, Marjorie Jones, Mildred Jones, Lulu Jordan, Mary Kerr, Gladys Morrison, Sudie Bates Nageley, Lucie Pickett, Elsie Spearman, Mary Clair Stuart, Pearl Thomas, Teresa Thomas, Grace Waldrop, Hazel Waldrop, Anne Watson, Jessie Whitehead, Sara Agnes Wilkes, Kathleen Armbruster, Gladys Cook, Juliette Ferrier.

H O M E

# MUSICAL CLUBS

## MUSICAL COUNCIL

*President* . . . . . EMMA ALISON  
*Vice-President* . . . . . KATHERINE SAVAGE  
*Secretary-Treasurer* . . . . . WILLIE GLEA HUDSON  
  
 BARBARA LeBARON                      MAUDE DAVIS  
 SARA CATER                                MARY ALMA STONE

## GLEE CLUB

*President* . . . . . MARY ALMA STONE  
*Vice-President* . . . . . MARGUERITE COUCH  
*Business Manager* . . . . . SARA CATER  
*Secretary-Treasurer* . . . . . MAUDE DAVIS

## CALKINS MUSIC CLUB

*President* . . . . . BARBARA LeBARON  
*Vice-President* . . . . . SARA CATER  
*Secretary-Treasurer* . . . . . KATHERINE SAVAGE



# U N I Q U E

CONTRIBUTORS TO

## *Campus Life*

**INDIVIDUALITY**—Dr. Vaughan—His is an inspiring brilliance. His command of spoken English furnishes an amazing flow of aptly chosen and exciting words to illumine his views and theories on the phenomena of the English language. He is equally impressive in the fields of rhetoric, literature and philology. He is witty and enormously energetic. He incites his students to work—and like it!

**SOCIALITY**—Mrs. Coleman—The very essence of home life is found embodied in her motherly sweetness. Her naïvete is delightful and her love for her "senior daughters" causes her to live with each daughter each major event of the year. She is a lovely and gracious hostess, one who is able to put real reluctance into the farewells of her guests. We worship at the feet of our "Senior Mother".

**BENEFICIALITY**—Mr. Anderson—His gentleness and benignity are evidences of the spirit of helpfulness which pervades his entire being. He is one to whom the most unimposing problem takes on a definite importance when subjected to him by those who trust him and respect his advice. His breadth and knowledge, and our assured reliance in his integrity, make him Alabama College's "Official Helper".

**PERSONALITY**—Miss Stockton—Hers is a cool, dignified nature, commanding genuine liking as well as admiration. Her unusual personality traits range from disinterested flippancy to concentrated interest, from sarcastic wit to sincere sympathy,—but always she is charmingly courteous. She is equally adept in juggling Spanish verbs and deftly sketching persons, places and things. Her accomplishments are varied and through them she vividly expresses the art which she is fortunate to have learned—that of living fully.

**ORIGINALITY**—Miss Osband—She is dashing and dynamic, with a full, rich, organ-quality voice. Any occasion will find her scribbling off doggerel in characteristic Osband Style,—subtly clever, charmingly sophisticated, and surprising in effects. Her splendid dramatic training, her agile wit, and her fanciful imagination help her to combine sounds, colors, action, and lights to make all her presentations distinctive.





*Amelia Earhart*

# *“Happy Landing”*

Happily landed as the pioneer aviatrix to fly to phenomenal fame by being the first woman to make a solo flight across the Atlantic, Amelia Earhart wishes “Happy Landing” to the students of Alabama College.

FACE

PAVING BLOCKS

COMMON

CLINKERS

# MONTEVALLO BRICK & TILE COMPANY

MONTEVALLO, ALABAMA

Shipping Point, Aldrich, Ala.



*When God made man, he made him out of clay.  
'Twas the best thing he had, and he knew 'twould stay.  
When he put in the backbone, he used a piece of shale  
A-running from the thinking box down to the tail.*

*Now, if God used clay of which to build man,  
Man should build of brick and help along the plan.  
There's nothing better anywhere to build a home to stay  
Than Rough Texture Brick made from Montevallo Clay.*



The Government always demands the best; that's why the C. W. A. paving on the Campus was done with brick from the Montevallo Brick & Tile Company.



WHEN YOU BUILD WITH BRICK  
YOU BUILD FOR PERMANENCE

# STRAND THEATRE

MONTEVALLO

"THE HOME OF GOOD SHOWS"

YOUR FUTURE HAPPINESS  
DEPENDS ON!!!?  
and Your Serving

**ROYAL CUP  
COFFEE**

in Your Home



**BATTERTON  
COFFEE COMPANY**

BIRMINGHAM, ALABAMA

**WOOD-FRUITTICHER  
GROCERY COMPANY**

Incorporated

Wholesale  
Grocers

2321-2323 First Avenue

BIRMINGHAM, ALABAMA

# MONTEVALLO DRUG CO.

MONTEVALLO, ALABAMA

..

COLLEGE GIRLS VISIT  
MONTEVALLO DRUG STORE

..

Because they like to be discriminating  
when it comes to Soda Fountains,  
Cosmetics and other Drug  
Articles

## JEWELERS AND SILVERSMITHS

CHINA

ART WARE

GIFTS

FURNITURE

INTERIOR DECORATION

## BROMBERG & CO.

218 North 20th St.

Birmingham, Ala.

## COX'S TEA ROOM

♦

SUNDAY NIGHT SUPPERS  
LUNCHES

CIGARETTES AND CANDY

♦

Let Us Serve You

Distinctive Clothes for the  
College Girl

See Mr. Leon Burger for the Latest "Dots"  
on the Latest "Hits"

Odum Bowers & White

Birmingham, Alabama

If *Every Woman* could realize  
what *Every Widow* knows,  
*Every Wife* would urge her  
husband to put his life insurance  
first.

•

HARRY GORDON

COLUMBIANA, ALABAMA

Representing

*Protective*  
LIFE INSURANCE CO.  
BIRMINGHAM, ALABAMA.

THE SOUTH'S LARGEST  
INDEPENDENT STEEL  
MANUFACTURER

GULF STATES STEEL  
COMPANY

BIRMINGHAM, ALABAMA



## Fussy About Clothes?

Of course! We're that way too!  
And the more exacting you are  
about choosing your clothes, the  
more certain we are that you'll  
prefer to choose them here!

—Loveman's is a store of individual fashion  
shops, dedicated to the best dressed women in the  
South, with modes to match each mood—and  
prices to appease every purse!

**Loveman, Joseph & Loeb**

**WALTER M. SHAW**  
DISTRICT MANAGER

of

Mutual Life Insurance Company of  
New York

MONTEVALLO, ALABAMA

**Underwood, Elliott,  
Fisher Company**

Be Practical as well as Collegiate and  
never be without your

**UNDERWOOD "PORTABLE"**

ADVANTAGES OFFERED BY

## ALABAMA COLLEGE

The State College for Women

Through adequate and thorough instruction under a well trained faculty, Alabama College offers to young women of the state an opportunity to procure a type of education which includes not only a background of liberal culture, but also professional knowledge centering about the home arts and arts and sciences relating to fields of gainful occupations open to women.

This training is covered by standard courses which lead to the A.B., B.S., and B.M. degrees in the fields of liberal arts and the social sciences, and in the special fields of art, education, home economics, physics, chemistry, biology, sociology, and social service, speech, library science, secretarial science, and music.

Physical development is aided by an exceptionally healthy locality, good food, expert medical care, and a physical and health education program which aims to keep every student out of doors for part of the day.

Alabama College is a member of the Alabama Association of Colleges, the Southern Association of Colleges and Secondary Schools, the American Association of Colleges, the Southern Association of Women's Colleges, the National Association of Schools of Music, and the American Association of University Women.

*Every Advantage That Accrues to the Graduate of the Modern Progressive  
College Accrues to the Graduate of Alabama College*

**Expenses Extremely Low**

**Catalog Upon Request**

O. C. CARMICHAEL, M.A., B.Sc. (Oxon), LL.D.



# VEGETABLES OF ALL KINDS

You can buy anything you need in  
this line right from our continuous  
supply

*Our Stock is Always Fresh*

Give Us Your Standing Order  
For Fresh Daily Supply

And Always Get the Best the Market Affords

## DOUGLASS BROTHERS

BIRMINGHAM, ALABAMA

Established Over Thirty Years

## When in Birmingham

*Be Sure to Visit Our Gift Shop*

LAMPS, CHINA, CRYSTAL  
GREETING CARDS

### JOBE-ROSE JEWELRY CO.

1917 Second Ave.

Birmingham, Ala.

SERVICE WITH A SMILE  
AT

## WILSON DRUG CO.

On the Corner

*We Serve to Please  
We Are Pleased to Serve*

Phone 41

Montevallo, Ala.

## ALABAMA PACKING COMPANY

*Makers of*

### PANSY FOODS

•

*"Pansy Foods Radiate Quality"*

•

Plant: 2031 21st Ave., No.

BIRMINGHAM, ALABAMA

## FOR EVERY OCCASION

The Appropriate Gift is Flowers—and Parker's  
Flowers "Say It" Just a Little Better

## PARKER'S FLOWER STORE

## MONTEVALLO ICE COMPANY

J. A. Brown, *Manager*

MONTEVALLO, ALABAMA

*In Birmingham, Shop at*

**Berry's**  
SHOE VALUES SUPREME  
1907 THIRD AVE

SMART, SWANKY STYLES  
FOR THE CO-ED

Delightful Evening Slippers for the Prom

FOR GROCERIES

of the Right Quality and at the Right  
Price, Follow the Right People to

**Montevallo Grocery  
Company**

J. A. BROWN

**General Electric  
Merchandise Products**

REFRIGERATORS  
HOME LAUNDRY EQUIPMENT  
RADIO, ETC.

**MATTHEWS ELECTRIC SUPPLY  
COMPANY**

*Distributors*

BIRMINGHAM, ALABAMA

**ALLEN-CRAIG  
GROCERY COMPANY**

Offer anything you need for that  
Picnic Supper, Pill Week necessities  
and Midnight Feasts

Buy Them at the Grocery Store with the Best  
Values and the Quickest Service

MONTEVALLO, ALABAMA

COMPLIMENTS

OF

**WILSON-BROWN  
COMPANY**

Wholesale Grocers

Birmingham, Alabama

KEEP HEALTHY  
EAT MORE  
**MANDY**  
WHOLE WHEAT FLOUR

Nothing  
Removed—  
Nothing  
Added



Ground  
Fresh  
Daily

Milled in Birmingham on Old Fashioned Mill  
Stones from Choice Soft Wheat that has been  
Thoroughly Cleaned and Scoured.

Manufactured By

**WADE WOOD MILLING CO.**

COME TO  
**YEAGER STUDIO**

FOR

ARTISTIC  
PHOTOGRAPHS



THIS BOOK PRINTED BY.....



THE  
WORLD'S  
LARGEST  
PUBLISHERS  
OF  
COLLEGE  
ANNUALS



**COLLEGE ANNUAL HEADQUARTERS**

*Highest Quality Workmanship Superior Extensive Service*



bright pages

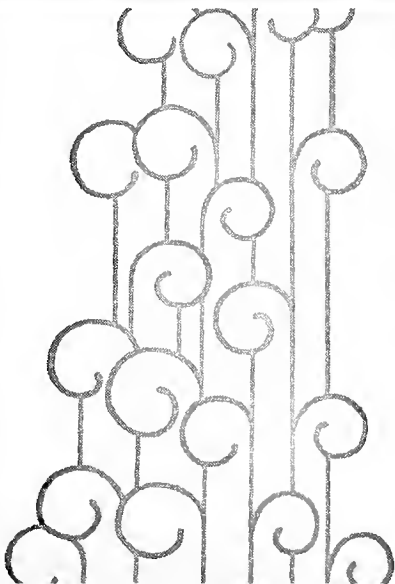


that reflect those happy,  
carefree days has been our  
goal

COLLEGE ANNUAL DIVISION

ALABAMA  
ENGRAVING  
COMPANY  
BIRMINGHAM

"IN THE HEART OF THE SOUTH"



THE TECHNALA GREATLY APPRECIATES THE  
COMPLIMENTS OF THE FOLLOWING



DR. J. I. REID  
Montevallo, Alabama

WALKER DRUG CO., Inc.  
Birmingham, Alabama

MONTEVALLO CAFE  
Montevallo, Alabama

E. BAER DRY GOODS AND  
CLOTHING CO.  
Montevallo, Alabama

DR. E. G. GIVHAN  
Montevallo, Alabama

DR. FLOYD LACEY  
Montevallo, Alabama

Fraternity, College and Class Jewelry

*Commencement Announcements  
and Invitations*

Jeweler and Stationer to the Senior Class of Alabama College

**L. G. BALFOUR COMPANY**

*Manufacturing Jewelers and Stationers*

ATTLEBORO, MASS.

REPRESENTED BY

**E. G. FITZGERALD**

BOX 1072

BIRMINGHAM, ALA.







